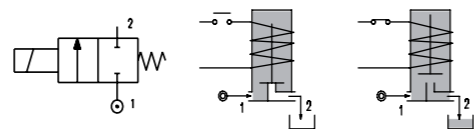
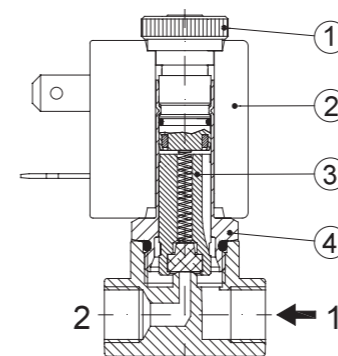


SERIES 105

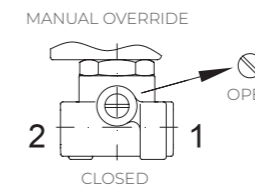
Solenoid Valve 2-way Normally Closed direct acting poppet type.



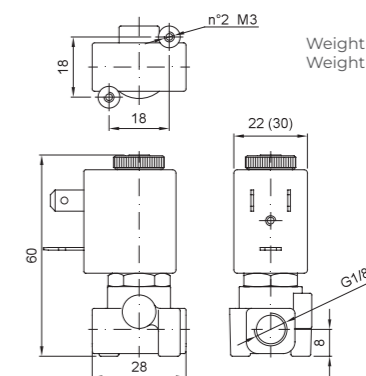
SPARE PARTS LIST



- 1. Coil fixing nut
- 2. Coil
- 3. Plunger
- 4. Armature tube assembly



OVERALL DIMENSION



Weight with coil series 3=0.13Kg
Weight with coil series 4=0.18Kg

Data in brackets are referred to coil series 4

CONSTRUCTION

BODY	Brass
ARMATURE TUBE	Brass
PLUNGER AND CORE	AISI 430FR
SPRINGS	AISI 302
SEAL MATERIAL	NBR - FPM - EPDM

FEATURES

Maximum allowable pressure PS 50bar [ⓐ]
Maximum fluid viscosity 25cSt (mm ² /s)
Ambient temperature: from -10°C to +80°C according to the coil
Universal mounting position

ON REQUEST: Versions for use with fluid temperature at -40°C

CODE ① ②	CONNECTION G ISO 228	ORIFICE [mm]	KV m ³ /h	DIFFERENTIAL PRESSURE [bar]		NOMINAL POWER			COIL		SEAL ①	TEMP. RANGE [°C]
				MIN.	MAX.	AC	VA	DC	SERIES	WIDTH		
E105A...12///...	1/8"	1.2	0.04	0	25	25	12	8	6.5	3	22	NBR=B -10 +90
E105A...15///...		1.5	0.06	0	16	16						
E105A...20///...		2	0.09	0	12	10						
E105A...25///...		2.5	0.14	0	8	5.5						
E105A...31///...		3.1	0.19	0	5	2						
E105A...40///...	4	0.35	0	4	1.2	15	11	5	4	30	EPDM=E -10 +140	
E105A...20///...	2	0.09	0	25	15							
E105A...25///...	2.5	0.14	0	16	8							
E105A...31///...	3.1	0.19	0	8	4							
E105A...40///...	4	0.35	0	5	2.5							

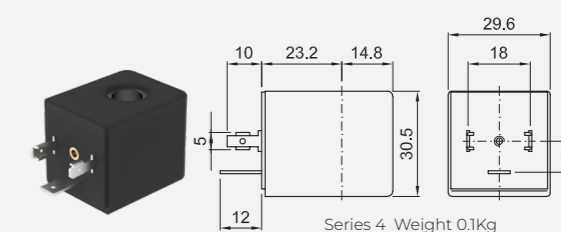
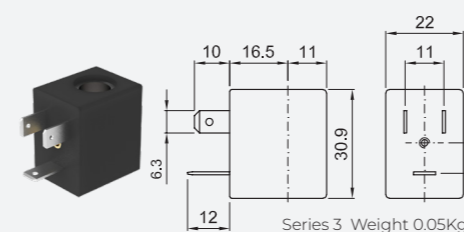
Example: E105AB20///30B NBR seal
Coil 24V 50/60Hz

- ⓐ Seal
- ⓑ Coil
- ⓒ The maximum allowable pressure PS for steam is 2,5bar (gauge pressure)

OPTIONS

Stainless steel armature tube
Electroless nickel plating
Series 7 explosion proof coil according to ATEX - EExmII
Manual override
Versions for use with industrial oxygen certified coils

COILS ②	ALTERNATING CURRENT 50/60Hz (V)								DIRECT CURRENT (V)			ELECTRICAL CONNECTION	CONNECTORS					
	12	24	48	110	120	220 230	240	380	12	24	48							
Series 3 Width 22	30A	30B	U35B 	30C	30D	U35D 	30E	V32E 	30F	U35F 	30G	300	U350 	30I	U35I 	30J	DIN 46244	PG9 CODE 10348000
Series 4 Width 30	40A	40B	-	40C	40D	-	40E	-	40F	-	40G	400	U450 	40I	U45I 	40J	DIN 43650A	PG9 CODE 10349000



DESCRIPTION

Class F insulation
Voltage tolerance
AC +15% -10%
DC ± 10%
Protection class
IP65 with connector fitted
IP00 without connector
Continuous service ED100%

OPTIONS

Class H insulation
Cable attached
Special coil voltage
Special coil powers
 certified coils

(for coil details see section 8)