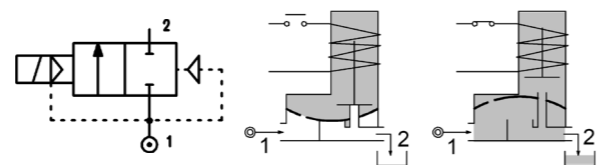
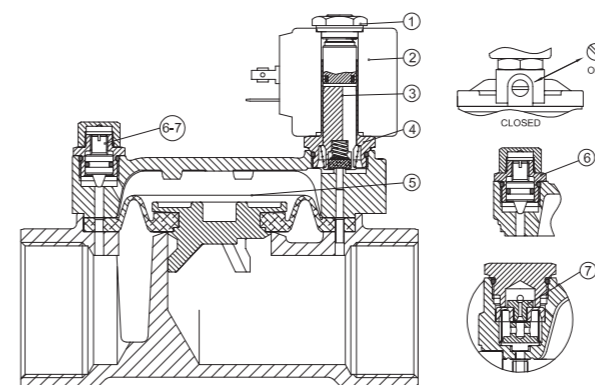


SERIES 107

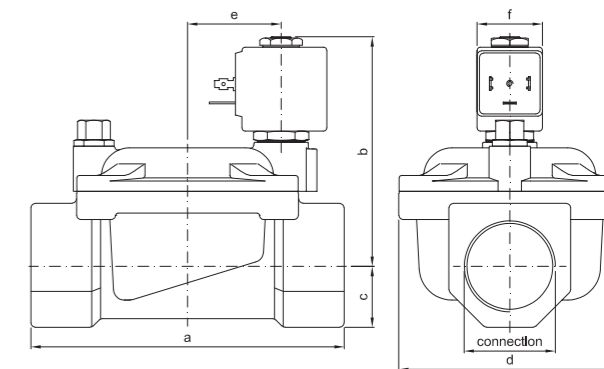
Solenoid valve 2 way normally closed with servo-assisted diaphragm



SPARE PARTS LIST



OVERALL DIMENSION



CONSTRUCTION

BODY AND COVER	Brass - Low Lead Brass NSF 61
ARMATURE TUBE	AISI 303
PLUNGER AND CORE	AISI 430FR
SPRINGS	AISI 302
SEAL MATERIAL	NBR - FPM - EPDM

FEATURES

Minimum differential pressure 0.15÷3bar
Maximum allowable pressure PS 20bar [Ⓢ]
Maximum fluid viscosity 25cSt (mm ² /s)
Ambient temperature: from -10°C to +80°C according to the coil
Preferred mounting position with vertical coil above

CODE ① ②	CONNECTION G ISO 228	ORIFICE [mm]	KV m ³ /h	DIFFERENTIAL PRESSURE [bar]			NOMINAL POWER			COIL		SEAL ①	TEMP. RANGE [°C]
				MIN.	MAX.		AC INRUSH	VA HOLDING	DC WATT	SERIES	WIDTH		
					AC	DC							
E107G...37//...	1"1/4	37	18	0.15	10	10							
E107H...37//...	1"1/2	37	21	0.15	10	10	20	15	10	2	30	NBR=B EPDM=E EPDM=M Ⓢ FPM=V	-10 +90 -10 +140 -10 +140
E107L...50//...	2"	50	36	0.15	10	10							
E107MB75//...	2"1/2	75	75	0.3	5	5							
E107RB75//...	3"	75	84	0.3	5	5	20	15	10	2	30	NBR=B	-10 +90
ⓈE107MB75/W/...	2"1/2	75	75	3	15	15							
ⓈE107RB75/W/...	3"	75	84	3	15	15							

Example: E107L50//201 NBR seal
Coil 24V DC

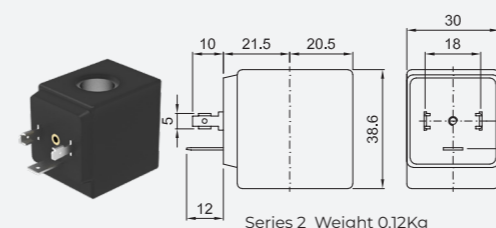
- ① Seal
- ② Coil
- ③ Reinforced diaphragm
- ④ The maximum allowable pressure PS for steam 2,5bar (gauge pressure)
- ⑤ EPMD certified WRAS

G2"1/2 e G3" SOLENOID VALVES
For applications with fluids listed in chapter 3 / group 1 of the PED Directive 2014/68 / EU (potentially hazardous or explosive fluids / mixtures) consider a PS value reduced to 15 bar max.

OPTIONS

Manual override
Electroless nickel plating
Version for vacuum applications (air/gas)
UL certified coils

COILS ③	ALTERNATING CURRENT 50/60Hz (V)								DIRECT CURRENT (V)			ELECTRICAL CONNECTION	CONNECTORS				
	12	24	48	110	120	220 230	240	380	12	24	48						
Series 2 Width 30	20A	20B	U25B UL	20C	20D	U25D UL	20E	20F	U25F UL	20G	200	U250 UL	201	U251 UL	202	DIN 43650A	PG9 CODE 10349000



DESCRIPTION
Class F insulation
Voltage tolerance
AC +15% -10%
DC ± 10%
Protection class
IP65 with connector fitted
IP00 without connector
Continuous service ED100%

OPTIONS
Class H insulation
Cable attached
Special coil voltage
Special coil powers
UL certified coils
(for coil details see section 8)