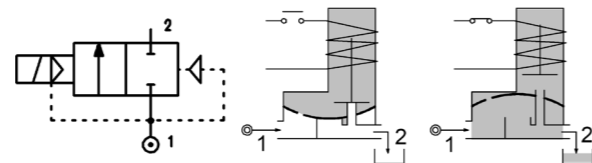
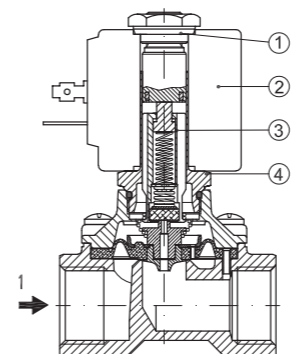


SERIES 108

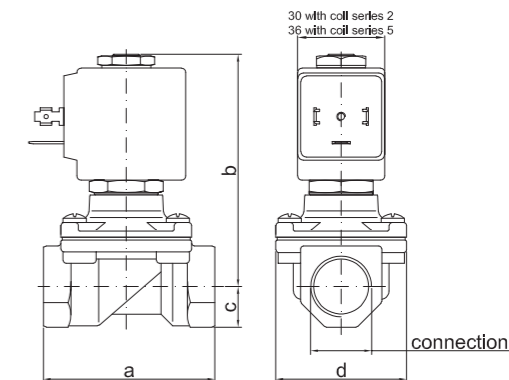
Solenoid valve 2 way normally closed with assisted-lift diaphragm



SPARE PARTS LIST



OVERALL DIMENSION



CONSTRUCTION

BODY AND COVER	Brass
ARMATURE TUBE	AISI 303
PLUNGER AND CORE	AISI 430FR
SPRINGS	AISI 302
SEAL MATERIAL	FPM

FEATURES

Maximum allowable pressure PS 25bar [ⓐ]
Maximum fluid viscosity 25cSt (mm ² /s)
Ambient temperature: from -10°C to +80°C according to the coil
Preferred mounting position with vertical coil above
For complete diaphragm opening, a differential pressure of at least 0,15 bar is necessary

CODE [ⓐ]	CONNECTION G ISO 228	ORIFICE [mm]	KV m ³ /h	DIFFERENTIAL PRESSURE [bar]			NOMINAL POWER			COIL		SEAL	TEMP. RANGE [°C]
				MIN.	MAX.		AC INRUSH	VA HOLDING	DC WATT	SERIES	WIDTH		
					AC	DC							
E108CV12///...	3/8"	12	2	0	10	-	20	15	-	2	30	FPM=V	-10 +140
E108DV12///...	1/2"	12	2.2	0	10	-	40	30	27				
E108CV12///...	3/8"	12	2	0	12	10	40	30	-	5	36		
E108DV12///...	1/2"	12	2.2	0	12	10	40	30	-				
E108EV18///...	3/4"	18	4.5	0	9	-	-	-	27				
E108FV25///...	1"	25	8.5	0	7	-	-	-	27				
D108EV18///...	3/4"	18	4.5	0	-	9	-	-	-				
D108FV25///...	1"	25	8.5	0	-	8	-	-	-				

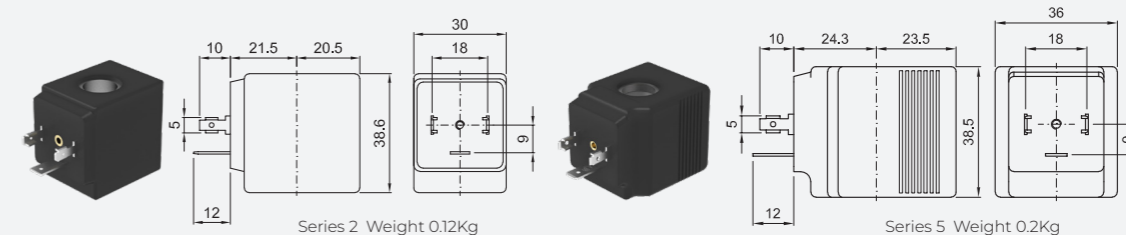
ⓐ Coil Example: E108FV25///52B FPM seal
Coil 24V 50/60Hz
ⓑ The maximum allowable pressure PS for steam 2,5bar (gauge pressure)

OPTIONS

Electroless nickel plating

cULus certified coils

COILS [ⓐ]	ALTERNATING CURRENT 50/60Hz (V)								DIRECT CURRENT (V)			ELECTRICAL CONNECTION	CONNECTORS			
	12	24	48	110	120	220 230	240	380	12	24	48					
Series 2 Width 30	20A	20B cULus	U25B cULus	20C	20D cULus	20E	20F cULus	20G	200	U250 cULus	201 cULus	U251 cULus	202	DIN 43650A	PG9 CODE 10349000	
Series 5 Width 36	52A	52B cULus	U55B cULus	52C	52D cULus	52E	52F cULus	U55F cULus	52G	520	U550 cULus	521 cULus	U551 cULus	522	DIN 43650A	PG9 CODE 10349001



DESCRIPTION

Insulation class Series 2 =F Series 5=H
Voltage tolerance AC +15% -10%
DC ± 10%
Protection class IP65 with connector fitted IP00 without connector

OPTIONS

Class H insulation
Cable attached
Special coil voltage
Special coil powers
cULus certified coils
(for coil details see section 8)