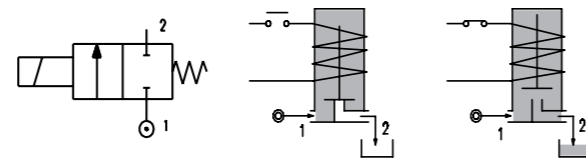
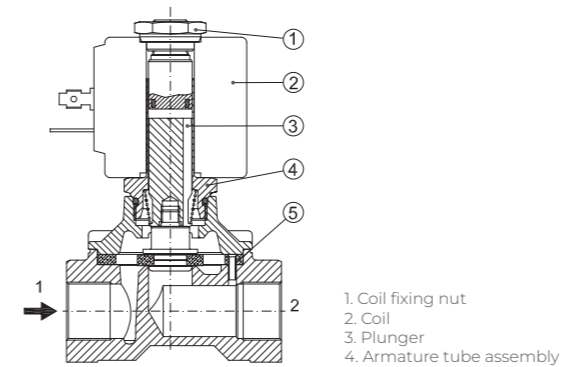


# SERIES 109

Solenoid Valve 2-way Normally Closed direct acting poppet type.

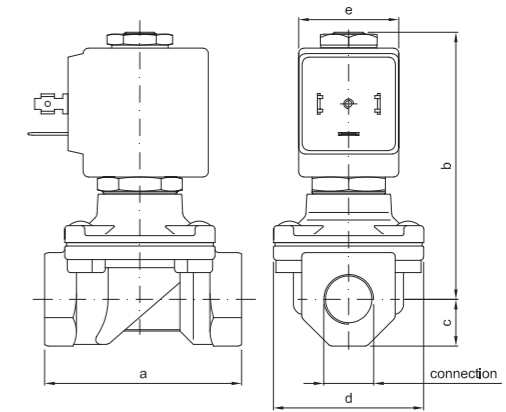


## SPARE PARTS LIST



Data in brackets are referred to coil series 4

## OVERALL DIMENSION



## CONSTRUCTION

BODY	Brass
ARMATURE TUBE	AISI 303
PLUNGER AND CORE	AISI 430FR
SPRINGS	AISI 302
SEAL MATERIAL	NBR - FPM - EPDM

## FEATURES

Maximum allowable pressure PS 5bar
Maximum fluid viscosity 25cSt (mm2/s)
Ambient temperature: from -10°C to +80°C according to the coil
Universal mounting position

CODE ① ②	CONNECTION G ISO 228	ORIFICE [mm]	KV m3/h	DIFFERENTIAL PRESSURE [bar]		NOMINAL POWER			COIL		SEAL ①	TEMP. RANGE [°C]	
				MIN.	MAX.	AC	VA	DC	SERIES	WIDTH			
													AC
E109C...12//...	3/8"	12	2	0	0.5	0.06	20	15	10	2	30	NBR=B	-10 +90
E109D...12//...	1/2"	12	2.2	0	0.5	0.06	20	15	--	2	30	EPDM=E	-10 +140
E109E...18//...	3/4"	18	4.5	0	0.14	--	20	15	--	2	30	EPDM=E	-10 +140
E109C...12//...	3/8"	12	2	0	0.8	0.4	40	30	27	5	36	FPM=V	-10 +140
E109D...12//...	1/2"	12	2.2	0	0.8	0.4	40	30	27	5	36	FPM=V	-10 +140
E109E...18//...	3/4"	18	4.5	0	0.2	0.12	40	30	27	5	36	FPM=V	-10 +140

## OPTIONS

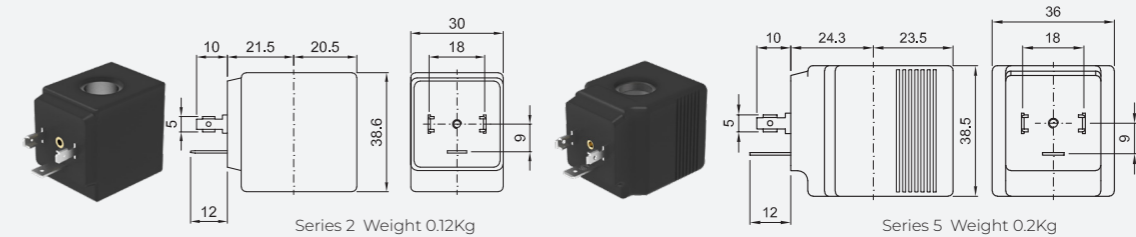
Electroless nickel plating
Versions for use with industrial oxygen
certified coils

① Seal  
② Coil

Example: E109EV18//52B FPM seal  
Coil 24V 50/60Hz

ON REQUEST: Versions for use with fluid temperature at -40°C

COILS ③	ALTERNATING CURRENT 50/60Hz (V)								DIRECT CURRENT (V)			ELECTRICAL CONNECTION	CONNECTORS		
	12	24	48	110	120	220 230	240	380	12	24	48				
Series 2 Width 30	20A	20B 	U25B 	20C	20D 	20E 	20F 	20G 	200	U250 	201 	U251 	202	DIN 43650A	PG9 CODE 10349000
Series 5 Width 36	52A	52B 	U55B 	52C	52D 	52E 	52F 	52G 	520	U550 	521 	U551 	522	DIN 43650A	PG9 CODE 10349001



## DESCRIPTION

Insulation class  
Series 2 =F Series 5=H  
Voltage tolerance  
AC +15% -10%  
DC ± 10%  
Protection class  
IP65 with connector fitted  
IP00 without connector

## OPTIONS

Class H insulation (series 2)  
Cable attached  
Special coil voltage  
Special coil powers  
 certified coils  
(for coil details see section 8)