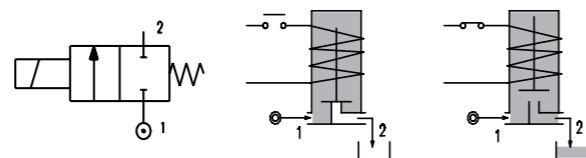
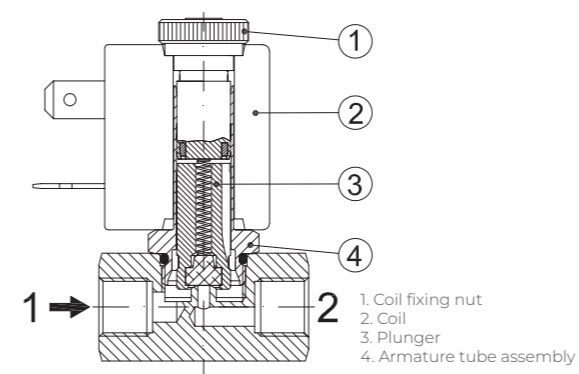


SERIES 111

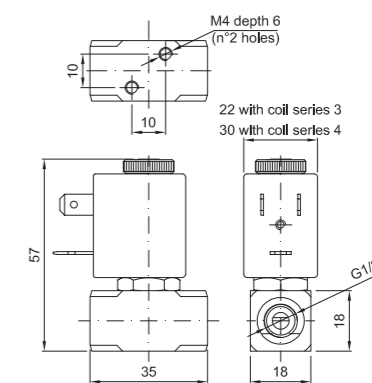
Solenoid Valve 2-way Normally Closed direct acting poppet type.



SPARE PARTS LIST



OVERALL DIMENSION



CONSTRUCTION

BODY	AISI 303
ARMATURE TUBE	AISI 303
PLUNGER AND CORE	AISI 430FR
SPRINGS	AISI 302
SEAL MATERIAL	NBR - FPM - EPDM

FEATURES

Maximum allowable pressure PS 50bar ^③
Maximum fluid viscosity 25cSt (mm ² /s)
Ambient temperature: from -10°C to +80°C according to the coil
Universal mounting position

CODE ① ②	CONNECTION G ISO 228	ORIFICE [mm]	KV m ³ /h	DIFFERENTIAL PRESSURE [bar]		NOMINAL POWER			COIL		SEAL ①	TEMP. RANGE [°C]	
				MIN.	MAX.	AC INRUSH	VA HOLDING	DC WATT	SERIES	WIDTH			
													AC
E111A...12///...	1/8"	1.2	0.04	0	25	25	12	8	6.5	3	22	NBR=B	-10 +90
E111A...15///...		1.5	0.06	0	16	16							
E111A...20///...		2	0.09	0	12	10							
E111A...25///...		2.5	0.14	0	8	5.5							
E111A...31///...	1/8"	3.1	0.19	0	5	2	15	11	5	4	30	FPM=V	-10 +140
E111A...20///...		2	0.09	0	25	15							
E111A...25///...		2.5	0.14	0	16	8							
E111A...31///...		3.1	0.19	0	8	4							

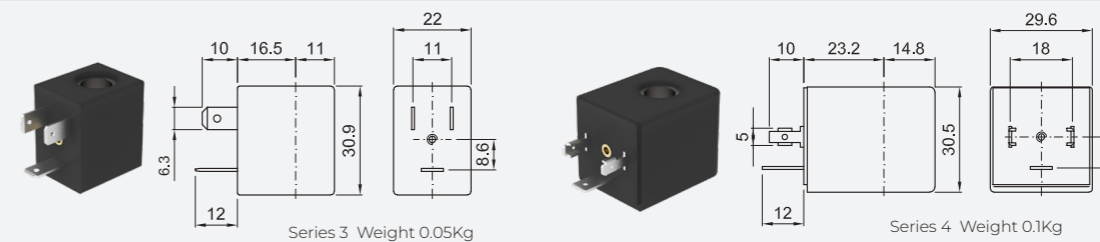
OPTIONS

Silver shading ring
Series 7 explosion proof coil according to ATEX - EExmI
Versions for use with industrial oxygen
certified coils

① Seal
 ② Coil
 ③ The maximum allowable pressure PS for steam is 2.5bar (gauge pressure)
 Example: E111AB20///30B NBR seal
 Coil 24V 50/60Hz

ON REQUEST: Versions for use with fluid temperature at -40°C

COILS ②	ALTERNATING CURRENT 50/60Hz (V)										DIRECT CURRENT (V)			ELECTRICAL CONNECTION	CONNECTORS			
	12	24	48	110	120	220 230	240	380	12	24	48							
Series 3 Width 22	30A	30B	U35B 	30C	30D	U35D 	30E	V32E 	30F	U35F 	30G	300	U350 	30I	U35I 	30J	DIN 46244	PG9 CODE 10348000
Series 4 Width 30	40A	40B	-	40C	40D	-	40E	-	40F	-	40G	400	U450 	40I	U45I 	40J	DIN 43650A	PG9 CODE 10349000



DESCRIPTION

Class F insulation
 Voltage tolerance
 AC +15% -10%
 DC ± 10%
 Protection class
 IP65 with connector fitted
 IP00 without connector
 Continuous service ED100%

OPTIONS

Class H insulation
 Cable attached
 Special coil voltage
 Special coil powers
 certified coils
 (for coil details see section 8)