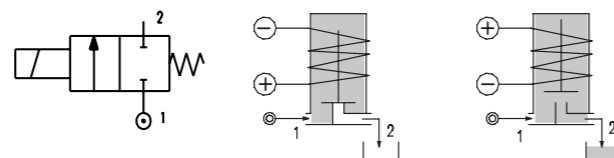
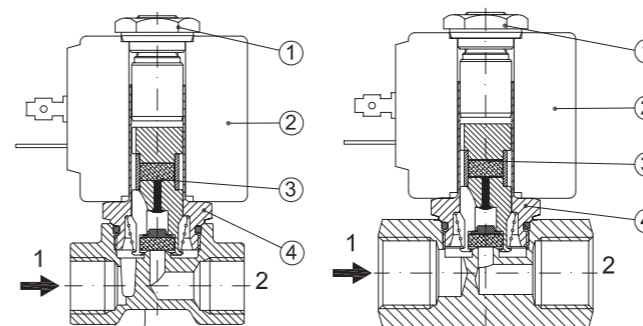


SERIES 116

Solenoid valve 2 way direct acting poppet type.
Bi-stable impulse drive.
The bi-stable function is achieved by the use of a polarized permanent magnet energizing the coil with a DC current for at least 15ms in the reverse direction of the preceding impulse.

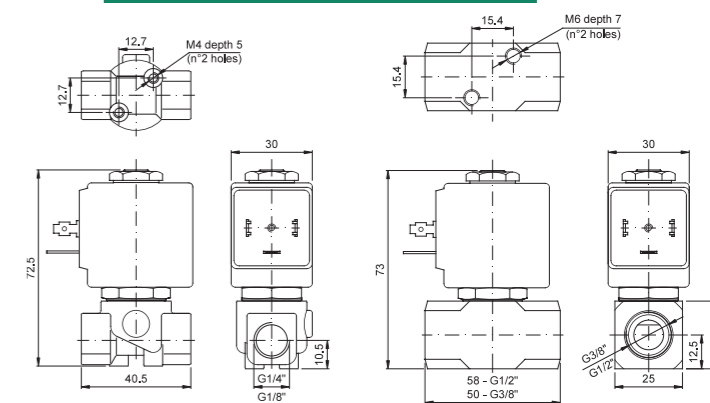


SPARE PARTS LIST



- 1. Coil fixing nut
- 2. Coil
- 3. Plunger
- 4. Armature tube assembly

OVERALL DIMENSION



CONSTRUCTION

BODY	Brass
ARMATURE TUBE	AISI 303
PLUNGER AND CORE	AISI 430FR
MAGNET	NeFeB
SPRINGS	AISI 302
SEAL MATERIAL	NBR - FPM - EPDM

FEATURES

- Maximum allowable pressure PS 50bar
- Maximum fluid viscosity 25cSt (mm2/s)
- Ambient temperature: from -10°C to +80°C according to the coil
- Universal mounting position

CODE ①②③	CONNECTION G ISO 228	ORIFICE [mm]	KV m3/h	DIFFERENTIAL PRESSURE [bar]		NOMINAL POWER DC WATT	COIL		SEAL ①	TEMP. RANGE °C
				MIN	MAX		SERIES	WIDTH		
D116...10///...	1/8" 1/4" 3/8" 1/2"	1	0.04	0	80	10	2	30	NBR=B EPDM=E FPM=V	-10 +90 -10 +120 -10 +120
D116...12///...		1.2	0.05	0	60					
D116...15///...		1.5	0.07	0	26					
D116...20///...		2	0.1	0	20					
D116...25///...		2.5	0.15	0	14					
D116...30///...		3	0.25	0	10					
D116...35///...		3.5	0.32	0	8					
D116...40///...		4	0.36	0	5					
D116...45///...		4.5	0.41	0	3.5					
D116...52///...		5.2	0.47	0	1.8					

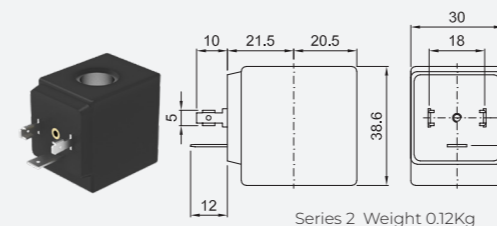
① Connection: A=1/8", B=1/4", C=3/8", D=1/2"
② Seal
③ Coil

Example: D116BB25///201 NBR seal
Coil 24V DC 10W

OPTIONS

- Electroless nickel plating
- Stainless steel seat insert (up to Ø4.5)

COILS ③	DIRECT CURRENT (V)			ELECTRICAL CONNECTION	CONNECTORS
	12	24	48		
Series 2 Width 30	200	201	202	DIN 43650A	PG9 code 10349000



DESCRIPTION
Insulation class F
Voltage tolerance ± 10%
Protection class
IP65 with connector fitted
IP00 without connector

OPTIONS
Class H insulation
Cable attached
Special coil voltage
Special coil powers
(for coil details see section 8)