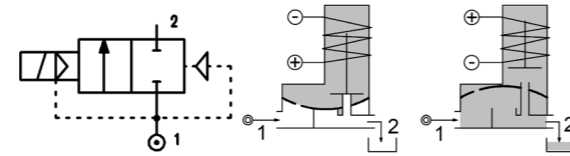
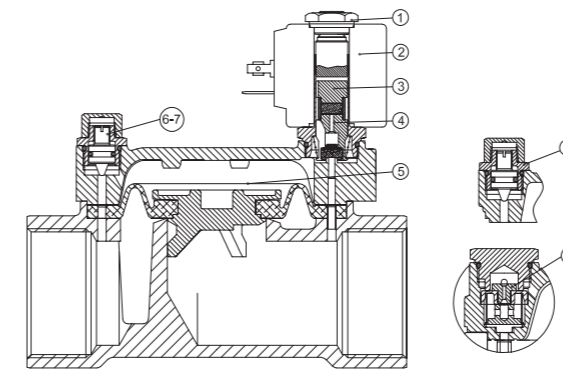


SERIES 117

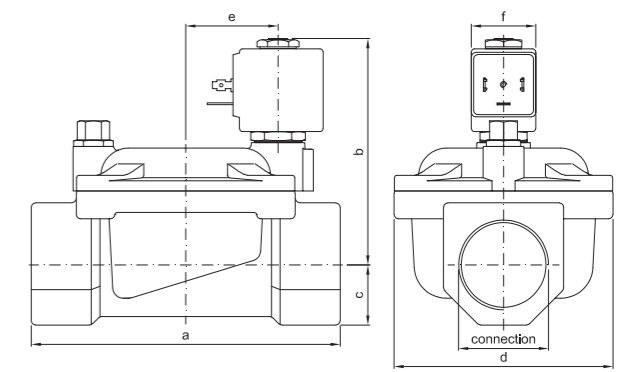
Solenoid valve 2 way with servo-assisted diaphragm bi-stable. The bi-stable function is achieved by the use of a polarised permanent magnet energising the coil with a DC current for at least 15ms in the reverse direction of the preceding impulse.



SPARE PARTS LIST



OVERALL DIMENSION



CONSTRUCTION

BODY AND COVER	Brass
ARMATURE TUBE	AISI 303
PLUNGER AND CORE	AISI 430FR
MAGNET	NeFeB
SPRINGS	AISI 302
SEAL MATERIAL	NBR - FPM - EPDM

FEATURES

Minimum differential pressure 0.15÷3bar
Maximum allowable pressure PS 20bar [ⓐ]
Maximum fluid viscosity 25cSt (mm ² /s)
Ambient temperature: from -10°C to +80°C according to the coil
Preferred mounting position with vertical coil above

CODE ① ②	CONNECTION G ISO 228	ORIFICE [mm]	KV m ³ /h	DIFFERENTIAL PRESSURE [bar]		NOMINAL POWER DC WATT	COIL		SEAL ①	TEMP. RANGE [°C]		
				MIN.	MAX.		SERIES	WIDTH				
D117G...37///...	1"1/4	37	18	0.15	10	10	2	30	NBR=B	-10 +90		
D117H...37///...	1"1/2	37	21	0.15	10							
D117I...50///...	2"	50	36	0.15	10							
D117MB75///...	2"1/2	75	75	0.3	5				EPDM=E	-10 +120		
D117RB75///...	3"	75	84	0.3	5							
ⓐD117RB75/W/...	2"1/2	75	75	3	10						FPM=V	-10 +120
ⓐD117MB75/W/...	3"	75	84	3	10							

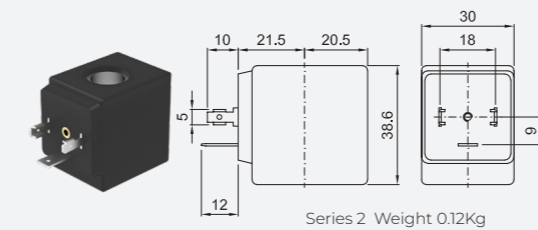
① Seal
 ② Coil
 ③ Reinforced diaphragm
 ⓐ The maximum allowable pressure PS for steam 2,5bar (gauge pressure)
 G2"1/2 e G3" SOLENOID VALVES
 For applications with fluids listed in chapter 3 / group 1 of the PED Directive 2014/68 / EU (potentially hazardous or explosive fluids / mixtures) consider a PS value reduced to 15 bar max.

Example: D117I50///201 NBR seal
 Coil 24V DC

OPTIONS

Special coil powers

COILS ②	DIRECT CURRENT (V)			ELECTRICAL CONNECTION	CONNECTORS
	12	24	48		
Series 2 Width 30	200	201	202	DIN 43650A	PG9 code 10349000



DESCRIPTION
 Class F insulation
 Voltage tolerance
 AC +15% -10%
 DC ± 10%
 Protection class
 IP65 with connector fitted
 IP00 without connector
 Continuous service ED100%

OPTIONS
 Class H insulation
 Cable attached
 Special coil voltage
 Special coil powers

CONNECTION	a	b	c	d	e	f	weight [kg]
G1"1/4	142	105	28	102	21	30	3.00
G1"1/2	142	105	28	102	21	30	2.85
G2"	158	115	35	119	21	30	4.30
G2"1/2	226	134	51	169	21	30	11.7
G3"	226	134	51	169	21	30	9.9