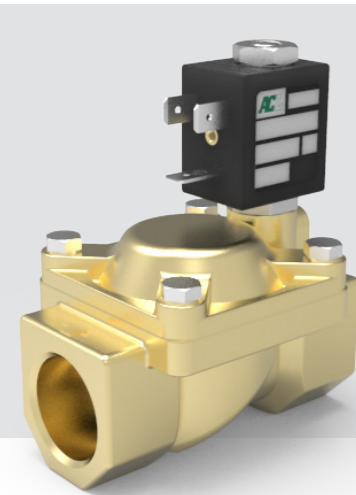
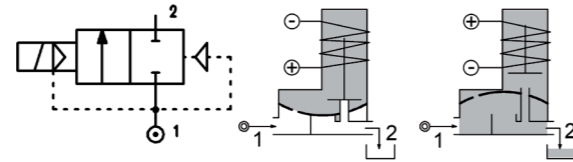
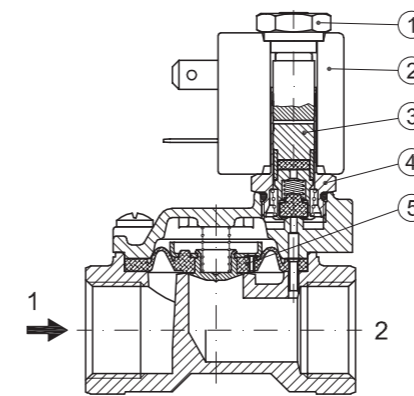


SERIES 117

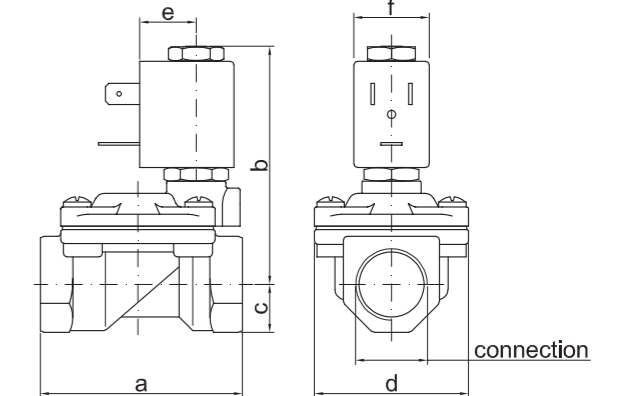
Solenoid valve 2 way with servo-assisted diaphragm bi-stable.
The bi-stable function is achieved by the use of a polarized permanent magnet energizing the coil with a DC current for at least 15ms in the reverse direction of the previous impulse.



SPARE PARTS LIST



OVERALL DIMENSION



CONSTRUCTION

BODY AND COVER	Brass
ARMATURE TUBE	AISI 303
PLUNGER AND CORE	AISI 430FR
MAGNET	NeFeB
SPRINGS	AISI 302
SEAL MATERIAL	NBR - FPM - EPDM

FEATURES

Minimum differential pressure 0.15bar
Maximum allowable pressure PS 25bar [ⓐ]
Maximum fluid viscosity 25cSt (mm ² /s)
Ambient temperature: from -10°C to +80°C according to the coil
Preferred mounting position with vertical coil above

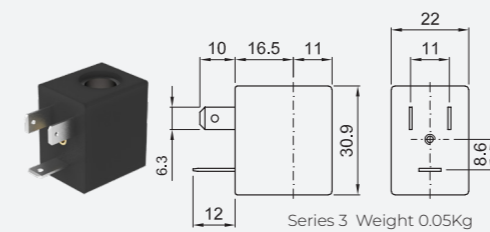
CODE ① ②	CONNECTION G ISO 228	ORIFICE [mm]	KV m ³ /h	DIFFERENTIAL PRESSURE [bar]		NOMINAL POWER DC WATT	COIL		SEAL ①	TEMP. RANGE [°C]
				MIN.	MAX.		SERIES	WIDTH		
D117B...10///...	1/4"	10	1.5	0.15	8	2	3	22	NBR=B	-10 +90
					15	5				
D117C...10///...	3/8"	10	1.7	0.15	8	2	3	22	NBR=B	-10 +90
					15	5				
D117C...12///...	3/8"	12	2.2	0.15	8	2	3	22	NBR=B	-10 +90
					15	5				
D117D...12///...	1/2"	12	2.5	0.15	8	2	3	22	EPDM=E	-10 +120
					15	5				
D117E...18///...	3/4"	18	5.5	0.15	8	2	3	22	FPM=V	-10 +120
					13	5				
D117F...25///...	1"	25	10.2	0.15	8	2	3	22	FPM=V	-10 +120
					10	5				
D117G...30///...	1 1/4"	30	15	0.15	8	2	3	22	FPM=V	-10 +120
					10	5				

① Seal
② Coil
ⓐ The maximum allowable pressure PS for steam 2,5bar (gauge pressure)
Example: D117DB12///301120 NBR seal
Coil 24V DC 2W

OPTIONS

Special coil powers

COILS ②	DIRECT CURRENT									ELECTRICAL CONNECTIONS	CONNECTORS						
	3V			6V			9V					12V			24V		
	2W	5W	6.5W	2W	5W	6.5W	2W	5W	6.5W	2W	5W	6.5W	2W	5W	6.5W		
Series 3 Width 30	3008120			3005120	3005150		3007120	3007150		3000120	3000150	300	301120	301150	301	DIN 46244	PC9 code 10348000



DESCRIPTION
Class F insulation
Voltage tolerance ± 10%
Protection class
IP65 with connector fitted
IP00 without connector
Continuous service ED100%

OPTIONS
Class H insulation
Cable attached
Special coil voltage
Special coil powers

CONNECTION	a	b	c	d	e	f	weight [kg]
G1/4" Ø10	49	65	11	32	16	22	0.23
G3/8" Ø10	49	65	11	32	16	22	0.24
G3/8" Ø12	59	70	14	45	16	22	0.42
G1/2" Ø12	59	70	14	45	16	22	0.39
G3/4"	79	76	18	55	16	22	0.65
G1"	96	85	20	72	16	22	1.05
G1 1/4" Ø30	119	92	25	85	16	22	1.70