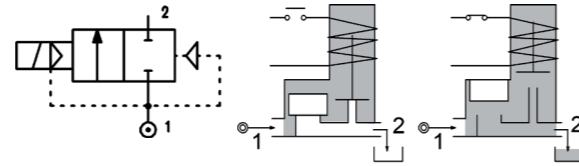
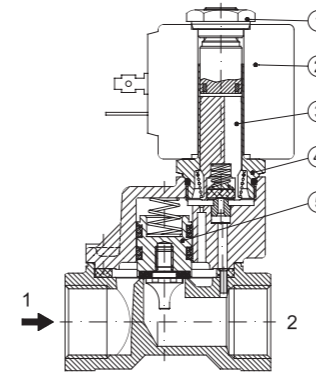


# SERIES 119W

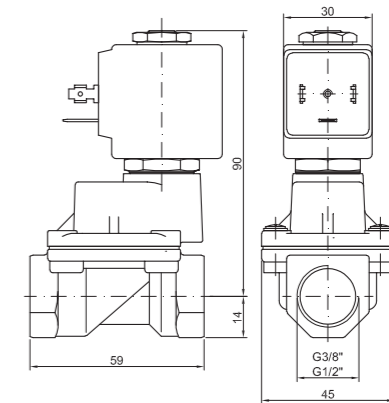
Solenoid valve 2 way normally closed with servo-assisted piston for use with steam



### SPARE PARTS LIST



### OVERALL DIMENSION



### CONSTRUCTION

BODY AND COVER	Brass
ARMATURE TUBE	AISI 303
PLUNGER AND CORE	AISI 430FR
SPRINGS	AISI 302
PISTON	AISI 303
PISTON SEAL	PTFE reinforced
SEAL MATERIAL	PTFE

### FEATURES

Minimum differential pressure 2,5bar
Ambient temperature with class H coil only -10°C +80°C
Preferred mounting position with vertical coil above

CODE	CONNECTION G ISO 228	ORIFICE [mm]	KV m3/h	DIFFERENTIAL PRESSURE [bar]			NOMINAL POWER			COIL		SEAL	TEMP. RANGE [°C]
				MIN.	MAX.		AC INRUSH	VA HOLDING	DC WATT	SERIES	WIDTH		
					AC	DC							
E119CW12/1/...	3/8"	12	2	2.5	10	10	20	15	10	2	30	PTFE	-10 +180
E119DW12/1/...	1/2"	12	2.2	2.5	10	10							

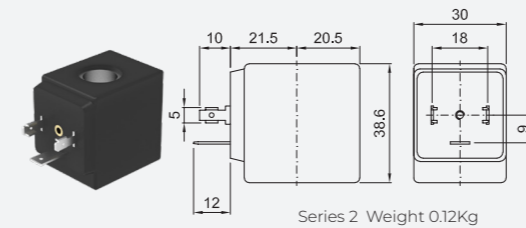
② Coil Example: E119DW12/1/221 PTFE seal  
Coil 24V DC  
Maximum allowable leakage <0.2NI/h

### OPTIONS

Electroless nickel plating

ATEX certified coils

COILS ③	ALTERNATING CURRENT 50/60Hz (V)								DIRECT CURRENT (V)			ELECTRICAL CONNECTION	CONNECTORS				
	12	24	48	110	120	220 230	240	380	12	24	48						
Series 2 Width 30	20A	20B	U25B	20C	20D	U25D	20E	20F	U25F	20G	200	U250	201	U251	202	DIN 43650A	PG9 CODE 10349000



**DESCRIPTION**  
Insulation class H  
Voltage tolerance AC +15% -10%  
DC ± 10%  
Protection class IP65 with connector fitted  
IP00 without connector  
Continuous service ED100%

**OPTIONS**  
Cable attached  
Special coil voltage  
Special coil powers  
  
(for coil details see section 8)