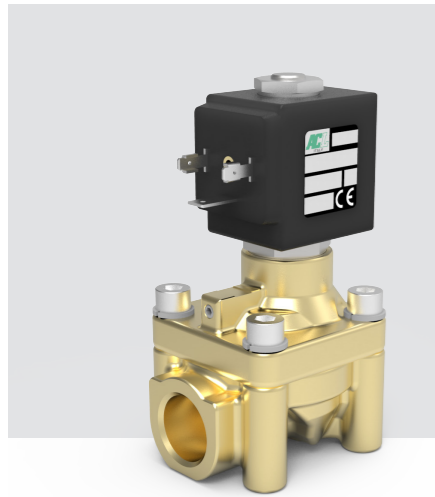
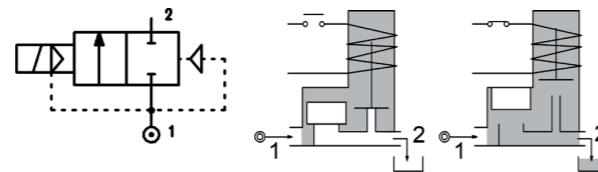
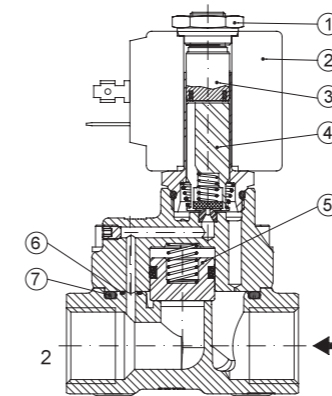


SERIES 124

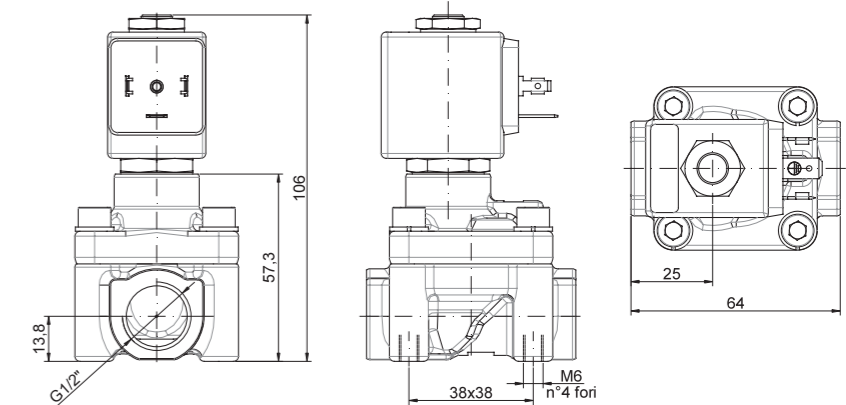
Solenoid valve 2 way normally closed with servo-assisted piston suitable for air and water.
Its requested a minimum differential pressure of 3 bar.



SPARE PARTS LIST



OVERALL DIMENSION



CONSTRUCTION

BODY AND COVER	Brass
ARMATURE TUBE	AISI 303
PLUNGER AND CORE	AISI 430FR
SPRINGS	AISI 302
PISTON	PBT
SEAL MATERIAL	main seal PTFE other FPM

FEATURES

Minimum differential pressure 3bar
Maximum allowable pressure PS 150bar
Maximum fluid viscosity 12cSt (mm2/s)
Ambient temperature: from -10°C to +80°C according to the coil
Preferred mounting position with vertical coil above

CODE ②	CONNECTION G ISO 228	ORIFICE [mm]	KV m3/h	DIFFERENTIAL PRESSURE [bar]		NOMINAL POWER			COIL		SEAL	TEMP. RANGE [°C]	
				MIN.	MAX.	AC INRUSH	VA HOLDING	DC WATT	SERIES	WIDTH			
													AC
E124DW12///...	1/2"	12	60	3	100	100	20	15	10	2	30	PTFE=W	-10 +95

② Coil
Maximum allowable leakage <0.2NI/h

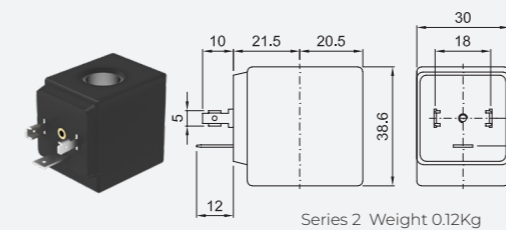
Example: E123CW07///20E PTFE seal
Coil 220-230V 50-60Hz

OPTIONS

Electroless nickel plating

ATEX certified coils

COILS ③	ALTERNATING CURRENT 50/60Hz (V)								DIRECT CURRENT (V)			ELECTRICAL CONNECTION	CONNECTORS				
	12	24	48	110	120	220 230	240	380	12	24	48						
Series 2 Width 30	20A	20B	U25B ATEX	20C	20D	U25D ATEX	20E	20F	U25F ATEX	20G	200	U250 ATEX	201	U251 ATEX	202	DIN 43650A	PG9 CODE 10349000



DESCRIPTION
Insulation class
Series 2 =F Series 5=H
Voltage tolerance
AC +15% -10%
DC ± 10%
Protection class
IP65 with connector fitted
IP00 without connector

OPTIONS
Class H insulation
Cable attached
Special coil voltage
Special coil powers
ATEX certified coils
(for coil details see section 8)