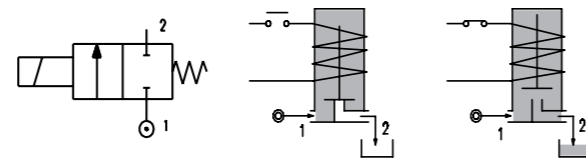
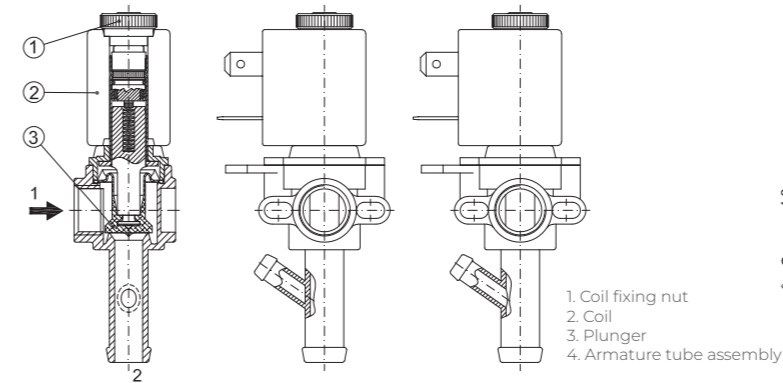


# SERIES 150

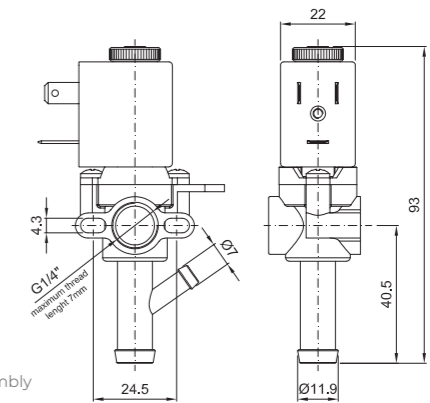
Solenoid valve 2 way normally closed  
direct acting with dry armature.  
No metal parts in contact with the media.



## SPARE PARTS LIST



## OVERALL DIMENSION



## CONSTRUCTION

BODY	Acetal copolymer
ARMATURE TUBE	Brass
PLUNGER AND CORE	AISI 430FR
SPRINGS	AISI 302
SEAL MATERIAL	SILICONE

## FEATURES

Maximum allowable pressure PS 2bar
Maximum fluid viscosity 25cSt (mm <sup>2</sup> /s)
Ambient temperature: from -10°C to +80°C according to the coil
Preferred mounting position with vertical coil above

CODE ②	CONNECTION G ISO 228	ORIFICE [mm]	KV m <sup>3</sup> /h	DIFFERENTIAL PRESSURE [bar]			NOMINAL POWER			COIL		SEAL ①	TEMP. RANGE [°C]
				MIN.	MAX.		AC	VA	DC	SERIES	WIDTH		
					AC	DC							
E150PS75/1/...	-			0	0.2	0.2							
E150PS75/6/...	1/4"			0	0.2	0.2	12	8	6.5	3	22	SILICONE=S	<+95°C
D150PS75/1/...	-	7.5	0.7	0	-	0.2							
D150PS75/5/...	1/4"			0	-	0.2							

CODE ②	CONNECTION G ISO 228	ORIFICE [mm]	KV m <sup>3</sup> /h	DIFFERENTIAL PRESSURE [bar]			NOMINAL POWER			COIL		SEAL ①	TEMP. RANGE [°C]
				MIN.	MAX.		AC	VA	DC	SERIES	WIDTH		
					AC	DC							
E150PS75/7/...	-			0	0.2	0.2							
E150PS75/1/...	1/4"			0	0.2	0.2	12	8	6.5	3	22	SILICONE=S	<+95°C
D150PS75/4/...	-	7.5	0.7	0	-	0.2							
D150PS75/3/...	1/4"			0	-	0.2							

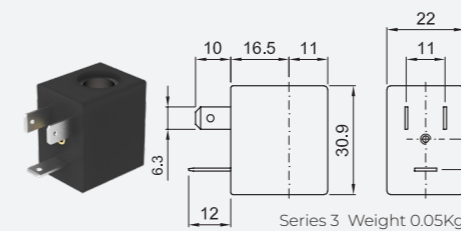
② Coil

Example: E150PS75/6/30B G1/4" inlet - Closed vent  
Coil 24V 50/60Hz

## OPTIONS

cULUS certified coils

COILS ②	ALTERNATING CURRENT 50/60Hz (V)							DIRECT CURRENT (V)			ELECTRICAL CONNECTION	CONNECTORS						
	12	24	48	110	120	220 230	240	380	12	24			48					
Series 3 Width 22	30A	30B	U35B cULUS	30C	30D	U35D cULUS	30E	V32E cULUS	30F	U35F cULUS	30G	300	U350 cULUS	301	U351 cULUS	302	DIN 46244	PG9 CODE 10348000



**DESCRIPTION**  
Class F insulation  
Voltage tolerance  
AC +15% -10%  
DC ± 10%  
Protection class  
IP65 with connector fitted  
IP00 without connector  
Continuous service ED100%

**OPTIONS**  
Class H insulation  
Cable attached  
Special coil voltage  
Special coil powers  
cULUS certified coils  
(for coil details see section 8)