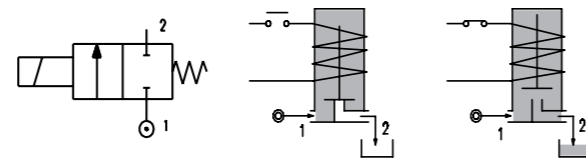
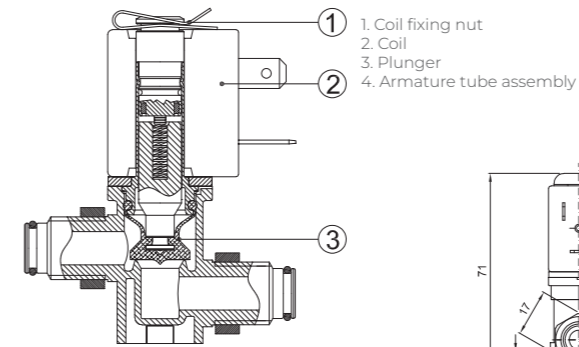


SERIES 151

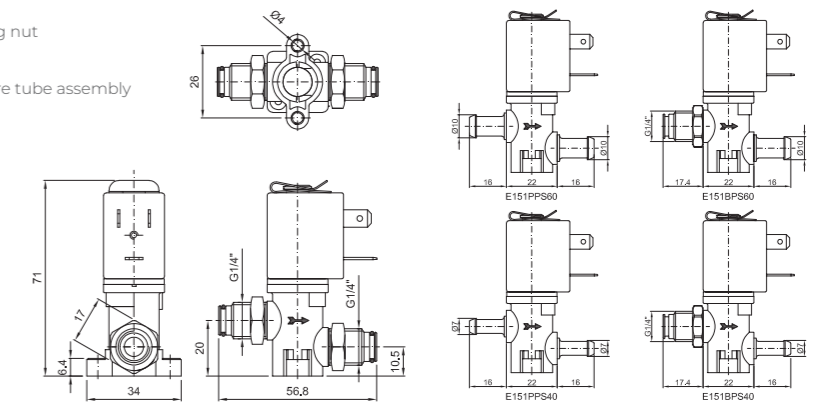
Solenoid valve 2 way normally closed
direct acting with dry armature.
No metal parts in contact with the media.



SPARE PARTS LIST



OVERALL DIMENSION



CONSTRUCTION

BODY	Acetal copolymer
ARMATURE TUBE	Brass
PLUNGER AND CORE	AISI 430FR
SPRINGS	AISI 302
SEAL MATERIAL	SILICONE

FEATURES

Maximum allowable pressure PS 2bar
Maximum fluid viscosity 25cSt (mm ² /s)
Ambient temperature: from -10°C to +80°C according to the coil
Preferred mounting position with vertical coil above

CONNECTION

E151BBS70	E151PPS60	E151PPS40	E151BPS60	E151BPS40
G1/4"	Hosetail DN6	Hosetail DN4	G1/4"-Hosetail DN6	G1/4"-Hosetail DN4

OTHER CONFIGURATION AVAILABLE ON REQUEST

CODE ②	CONNECTION	ORIFICE [mm]	KV m ³ /h	DIFFERENTIAL PRESSURE [bar]			NOMINAL POWER			COIL		SEAL ①	TEMP. RANGE [°C]
				MIN.	MAX.		AC	VA	DC	SERIES	WIDTH		
					AC	DC							
E151BBS70///...	G1/4"	7	0.83	0	0.6	0.3							
E151PPS60///...	Hosetail DN6	6	0.63	0	0.6	0.3							
E151PPS40///...	Hosetail DN4	4	0.34	0	0.6	0.3	12	8	6.5	3	22	SILICONE=S	<+95°C
E151BPS60///...	G1/4"-Hosetail DN6	6	0.63	0	0.6	0.3							
E151BPS40///...	G1/4"-Hosetail DN4	4	0.34	0	0.6	0.3							

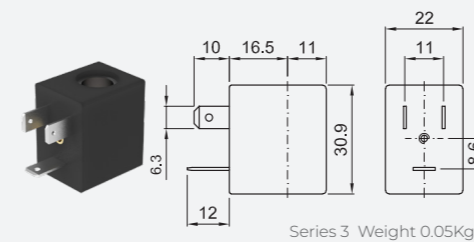
FOR HIGHER DIFFERENTIAL PRESSURE CONTACT THE MANUFACTURER

② Coil Example: E151BPS60///30B G1/4" inlet, hosetail DN6 outlet
Coil 24V 50/60Hz

OPTIONS

UL certified coils
Nickel plated armature tube
For connection accessories see section 9

COILS ②	ALTERNATING CURRENT 50/60Hz (V)						DIRECT CURRENT (V)			ELECTRICAL CONNECTION	CONNECTORS							
	12	24	48	110	120	220 230	240	380	12			24	48					
Series 3 Width 22	30A	30B	U35B	30C	30D	U35D	30E	V32E	30F	U35F	30G	300	U350	30I	U35I	30J	DIN 46244	PG9 CODE 10348000



DESCRIPTION
Class F insulation
Voltage tolerance
AC +15% -10%
DC ± 10%
Protection class
IP65 with connector fitted
IP00 without connector
Continuous service ED100%

OPTIONS
Class H insulation
Cable attached
Special coil voltage
Special coil powers
UL certified coils
(for coil details see section 8)