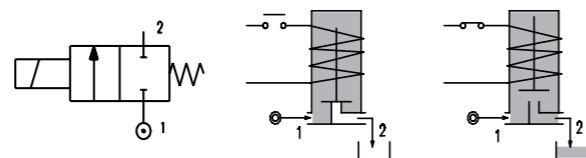
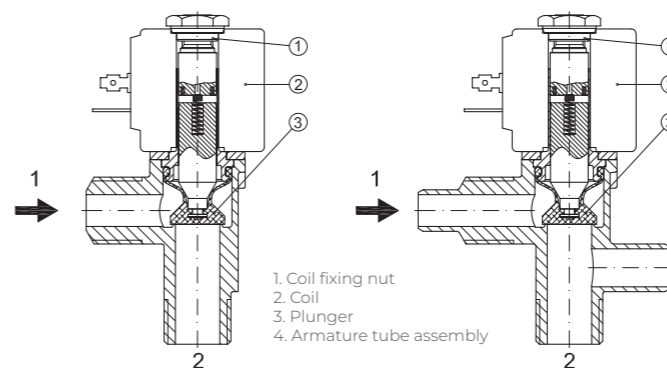


SERIES 160

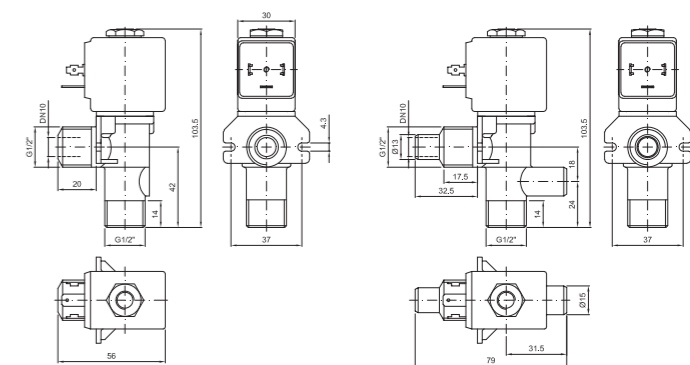
Solenoid valve 2 way normally closed direct acting with dry armature. No metal parts in contact with the media.



SPARE PARTS LIST



OVERALL DIMENSION



CONSTRUCTION

BODY	Acetal copolymer
ARMATURE TUBE	AISI 303
PLUNGER AND CORE	AISI 430FR
SPRINGS	AISI 302
SEAL MATERIAL	SILICONE

FEATURES

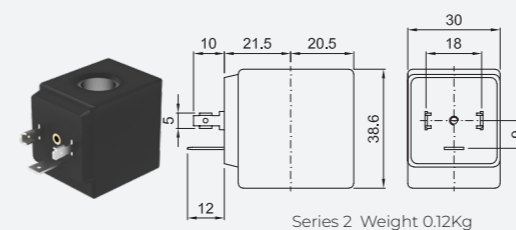
Maximum allowable pressure PS 1.5bar
Maximum fluid viscosity 25cSt (mm2/s)
Ambient temperature: from -10°C to +80°C according to the coil
Mounting position with vertical coil above

CODE ① ②	CONNECTION	ORIFICE [mm]	KV m3/h	DIFFERENTIAL PRESSURE [bar]		NOMINAL POWER			COIL		SEAL ①	TEMP. RANGE [°C]
				INLET	OUTLET	AC INRUSH	VA HOLDING	DC WATT	SERIES	WIDTH		
VERSION WITH CLOSED VENT												
E160S...10/1/...	1/2"	10	1.7	0.5	0.1	20	15	10	2	30	SILICONE=S FPM=V	<+95°C
VERSION WITH OPEN VENT												
E160S...10///...	1/2"	10	1.7	0.5	0.1	20	15	10	2	30		

OPTIONS

UL certified coils

COILS ③	ALTERNATING CURRENT 50/60Hz (V)							DIRECT CURRENT (V)			ELECTRICAL CONNECTION	CONNECTORS					
	12	24	48	110	120	220 230	240	380	12	24			48				
Series 2 Width 30	20A	20B	U25B	20C	20D	U25D	20E	20F	U25F	20G	200	U250	201	U251	202	DIN 43650A	PG9 CODE 10349000



DESCRIPTION
Class F insulation
Voltage tolerance
AC +15% -10%
DC ± 10%
Protection class
IP65 with connector fitted
IP00 without connector

OPTIONS
Cable attached
Special coil voltage
Special coil powers
UL certified coils
(for coil details see section 8)