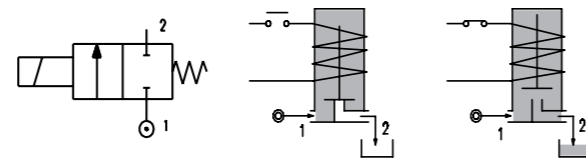
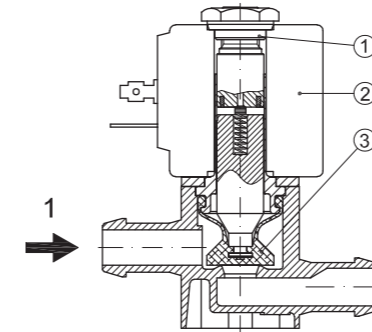


SERIES 161

Solenoid valve 2 way normally closed
direct acting with dry armature.
No metal parts in contact with the media.

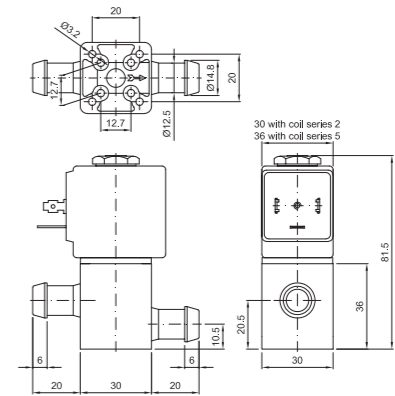


SPARE PARTS LIST



- 1. Coil fixing nut
- 2. Coil
- 3. Plunger
- 4. Armature tube assembly

OVERALL DIMENSION



CONSTRUCTION

| | |
|------------------|------------------|
| BODY | Acetal copolymer |
| ARMATURE TUBE | AISI 303 |
| PLUNGER AND CORE | AISI 430FR |
| SPRINGS | AISI 302 |
| SEAL MATERIAL | SILICONE |

FEATURES

| |
|--|
| Maximum allowable pressure PS 2bar |
| Maximum fluid viscosity 25cSt (mm ² /s) |
| Ambient temperature: from -10°C to +80°C according to the coil |
| Mounting position with vertical coil above |

| CODE ① ② | CONNECTION | ORIFICE [mm] | KV m ³ /h | DIFFERENTIAL PRESSURE [bar] | | | NOMINAL POWER | | | COIL | | SEAL ① | TEMP. RANGE [°C] |
|----------------|--------------|-----------------|-------------------------|-----------------------------|------|------|---------------|---------------|------------|--------|-------|---------------------|---------------------|
| | | | | MIN. | MAX. | | AC INRUSH | VA HOLDING | DC WATT | SERIES | WIDTH | | |
| | | | | | AC | DC | | | | | | | |
| E161P..8//... | Hosetail DN8 | 8 | 1.1 | 0 | 0.15 | 0.15 | 20 | 15 | 10 | 2 | 30 | SILICONE=S FPM=V | <+95°C |
| E161P..8/1/... | Hosetail DN8 | 8 | 1.1 | 0 | 0.5 | 0.5 | 40 | 30 | 27 | 5 | 36 | | |

| CODE ① ② | CONNECTION | ORIFICE [mm] | KV m ³ /h | DIFFERENTIAL PRESSURE [bar] | | | NOMINAL POWER | | | COIL | | SEAL ① | TEMP. RANGE [°C] |
|----------------|--------------|-----------------|-------------------------|-----------------------------|------|------|---------------|---------------|------------|--------|-------|---------------------|---------------------|
| | | | | MIN. | MAX. | | AC INRUSH | VA HOLDING | DC WATT | SERIES | WIDTH | | |
| | | | | | AC | DC | | | | | | | |
| E161P..8/V/... | Hosetail DN8 | 8 | 1.1 | 0 | -0.9 | -0.7 | 20 | 15 | 10 | 2 | 30 | SILICONE=S FPM=V | <+95°C |
| E161P..8/V/... | Hosetail DN8 | 8 | 1.1 | 0 | -0.9 | -0.9 | 40 | 30 | 27 | 5 | 36 | | |

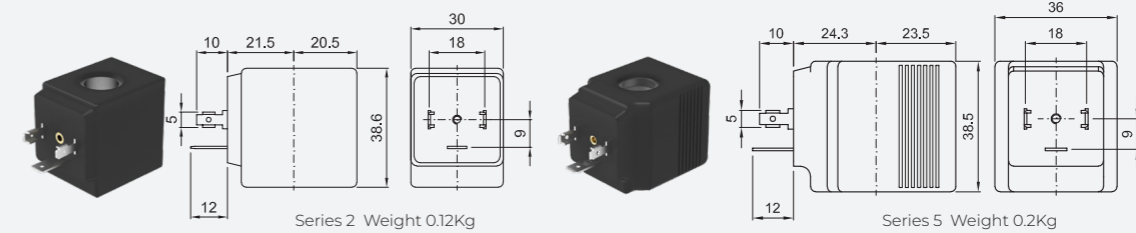
② Coil

Example: E160SS10/1/20E Closed vent - Coil 230V 50/60Hz

OPTIONS

ATEX certified coils

| COILS ③ | ALTERNATING CURRENT 50/60Hz (V) | | | | | | | | DIRECT CURRENT (V) | | | ELECTRICAL CONNECTION | CONNECTORS | | | | |
|----------------------|------------------------------------|-----|--------------|-----|-----|--------------|-----|-----|-----------------------|-----|-----|-----------------------|------------|--------------|-----|------------|-------------------------|
| | 12 | 24 | 48 | 110 | 120 | 220 230 | 240 | 380 | 12 | 24 | 48 | | | | | | |
| Series 2 Width 30 | 20A | 20B | U25B ATEX | 20C | 20D | U25D ATEX | 20E | 20F | U25F ATEX | 20G | 200 | U250 ATEX | 201 | U251 ATEX | 202 | DIN 43650A | PG9 CODE 10349000 |
| Series 5 Width 36 | 52A | 52B | U55B ATEX | 52C | 52D | U55D ATEX | 52E | 52F | U55F ATEX | 52G | 520 | U550 ATEX | 521 | U551 ATEX | 522 | DIN 43650A | PG9 CODE 10349001 |



DESCRIPTION

Insulation class
Series 2 =F Series 5=H
Voltage tolerance
AC +15% -10%
DC ± 10%
Protection class
IP65 with connector fitted
IP00 without connector

OPTIONS

Class H insulation (series 2)
Cable attached
Special coil voltage
Special coil powers
ATEX certified coils
(for coil details see section 8)