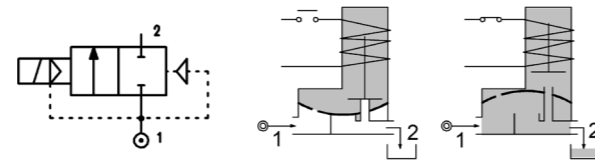
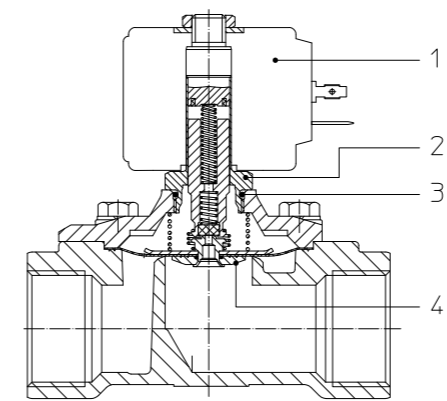


SERIES 168

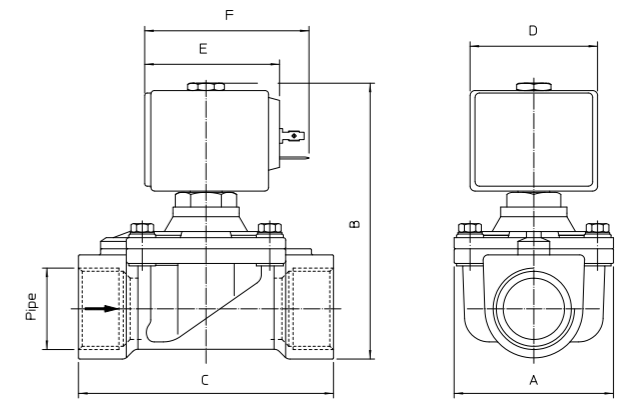
Solenoid valve 2 way normally closed with assisted-lift diaphragm



SPARE PARTS LIST



OVERALL DIMENSION



CONSTRUCTION

BODY AND COVER	Brass
ARMATURE TUBE	AISI 303
PLUNGER AND CORE	AISI 430FR
SPRINGS	AISI 302
SEAL MATERIAL	FPM NBR (on request)

FEATURES

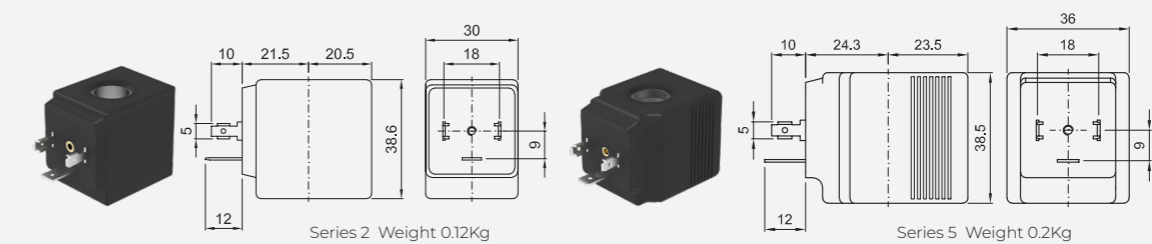
Maximum allowable pressure PS 16bar ^③
Maximum fluid viscosity 25cSt (mm ² /s)
Ambient temperature: from -10°C to +80°C according to the coil
Preferred mounting position with vertical coil above

CODE ① ②	CONNECTION G ISO 228	ORIFICE [mm]	KV m ³ /h	DIFFERENTIAL PRESSURE [bar]		NOMINAL POWER	COIL		SEAL ①	TEMP. RANGE [°C]	
				MIN.	MAX.		SERIES	WIDTH			
											AC
E168CV11///...	3/8"	11	1.2	0	14	5	10W	2	30	FPM=V	-10 +140
					-	14	27W	5	36		
E168DV16///...	1/2"	16	2.4	0	14	2.5	10W	2	30		
					-	14	27W	5	36		
E168EV16///...	3/4"	16	2.4	0	14	2.5	10W	2	30		
					-	14	27W	5	36		
E168EV20/H/...	3/4"	20	7.2	0	16	5	10W	2	30		
					-	16	27W	5	36		
E168FV25///...	1"	25	7.2	0	8	-	10W	2	30		
					14	1.5	14W	5	36		
					-	6	27W	5	36		
E168FV25/H/...	1"	25	8.4	0	16	5	10W	2	30		
					-	16	14W	5	36		
					-	16	27W	5	36		
E168GV35///...	1 1/4"	35	16.2	0	-	6	14W	5	36		
					-	16	27W	5	36		
					16	-	10W	2	30		
E168HV40///...	1 1/2"	40	16.8	0	-	6	14W	5	36		
					-	16	27W	5	36		
					16	-	10W	2	30		

OPTIONS

cRUUS certified coils
NPT connections
ATEX Ex d coils
Degreased for use with oxygen

COILS ②	ALTERNATING CURRENT 50/60Hz (V)							DIRECT CURRENT (V)		ELECTRICAL CONNECTION	CONNECTORS
	12	24	48	110	220 230	240	380	12	24		
Series 2 Width 30-10W	20A	20B	20C	20D	20E	20F	20G	200	201	DIN 43650A	PC9 code 10349000 or PG11 code 10349001
Series 5 Width 36-14W	-	U55B cRUUS	-	U55D cRUUS	-	U55F cRUUS	-	U550 cRUUS	U551 cRUUS		
Series 5 Width 36-27W	52A	52B	52C	52D	52E	52F	52G	520	521		



DESCRIPTION

Insulation class
Series 2 =F Series 5=H
Cable attached
Voltage tolerance
AC +15% -10%
DC ± 10%
Protection class
IP65 with connector fitted
IP00 without connector

OPTIONS

Class H insulation (series 2)
Cable attached
Special coil voltage
Special coil powers
cRUUS certified coils
(for coil details see section 8)

- ① Seal
- ② Coil
- ③ The maximum allowable pressure PS for steam 2,5bar (gauge pressure)