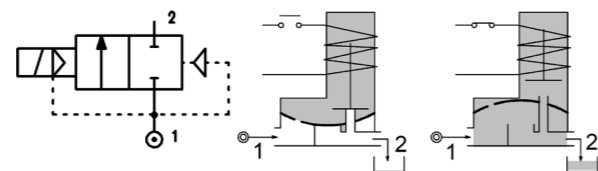
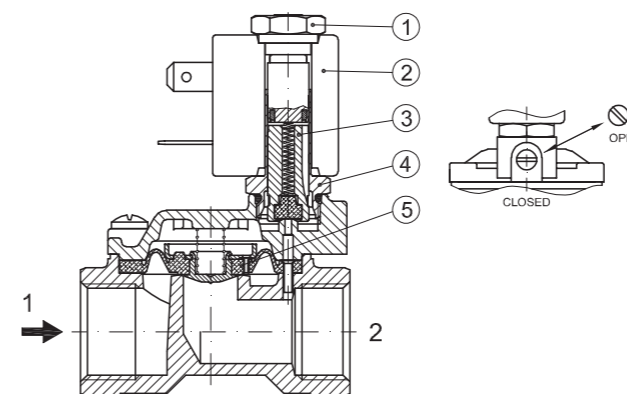


SERIES 177

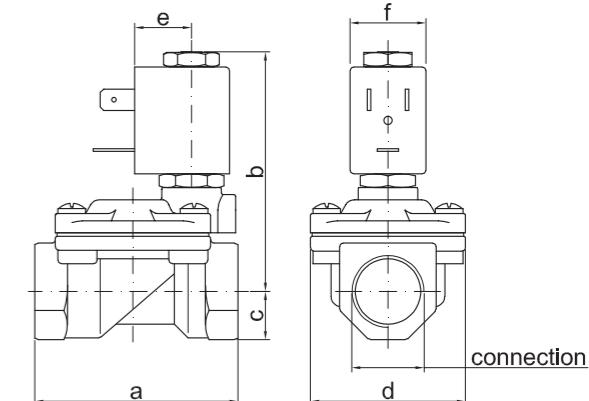
Solenoid valve 2 way normally closed in stainless steel AISI 316 with servo-assisted diaphragm



SPARE PARTS LIST



OVERALL DIMENSION



CONSTRUCTION

BODY AND COVER	AISI 316
ARMATURE TUBE	AISI 303
PLUNGER AND CORE	AISI 430FR
SPRINGS	AISI 302
SEAL MATERIAL	NBR - FPM - EPDM

FEATURES

Minimum differential pressure 0.15bar
Maximum allowable pressure PS 25bar [Ⓢ]
Maximum fluid viscosity 25cSt (mm ² /s)
Ambient temperature: from -10°C to +80°C according to the coil
Preferred mounting position with vertical coil above

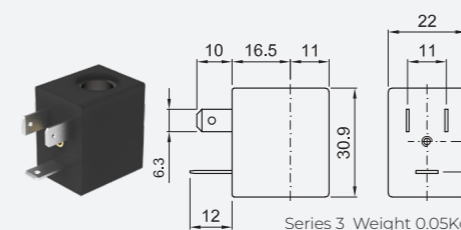
OPTIONS

Manual override
Series 7 explosion proof coil according to ATEX - EExmII
Food approval seal material
Version with slow closing diaphragm
Version for use with oxygen
Silver shading ring
UL certified coils

COILS ②	ALTERNATING CURRENT 50/60Hz (V)								DIRECT CURRENT (V)			ELECTRICAL CONNECTION	CONNECTORS					
	12	24	48	110	120	220 230	240	380	12	24	48							
Series 3 Width 22	30A	30B	U35B UL	30C	30D	U35D UL	30E	V32E	30F	U35F UL	30G	300	U350 UL	301	U351 UL	302	DIN 46244	PC9 CODE 10348000

CODE ① ②	CONNECTION G ISO 228	ORIFICE [mm]	KV m ³ /h	DIFFERENTIAL PRESSURE [bar]			NOMINAL POWER			COIL		SEAL ①	TEMP. RANGE [°C]
				MIN.	MAX.		AC	VA	DC	SERIES	WIDTH		
					AC	DC							
E177C...12///...	3/8"	12	2.2	0.15	15	15						NBR=B	-10 +90
E177D...12///...	1/2"	12	2.5	0.15	15	15	12	8	6.5	3	22	EPDM=E	-10 +140
E177E...18///...	3/4"	18	5.5	0.15	13	13						FPM=V	-10 +140
E177F...25///...	1"	25	10.2	0.15	10	10							
E177C...12///...	3/8"	12	2.2	0.15	15	15						NBR=B	-10 +90
E177D...12///...	1/2"	12	2.5	0.15	15	15	12	8	6.5	3	22	EPDM=E	-10 +140
E177E...18///...	3/4"	18	5.5	0.15	13	13						FPM=V	-10 +140
E177F...25///...	1"	25	10.2	0.15	10	10							
E177C...12///...	3/8"	12	2.2	0.15	15	15						NBR=B	-10 +90
E177D...12///...	1/2"	12	2.5	0.15	15	15	12	8	6.5	3	22	EPDM=E	-10 +140
E177E...18///...	3/4"	18	5.5	0.15	13	13						FPM=V	-10 +140
E177F...25///...	1"	25	10.2	0.15	10	10							

① Seal
 ② Coil
 ③ The maximum allowable pressure PS for steam 2,5bar (gauge pressure)
 Example: E177DB12///301 NBR seal
 Coil 24V DC



DESCRIPTION
 Class F insulation
 Voltage tolerance
 AC +15% -10%
 DC ± 10%
 Protection class
 IP65 with connector fitted
 IP00 without connector
 Continuous service ED100%

OPTIONS
 Class H insulation (series 2)
 Cable attached
 Special coil voltage
 Special coil powers
 UL certified coils
 (for coil details see section 8)