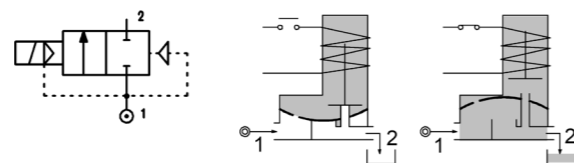
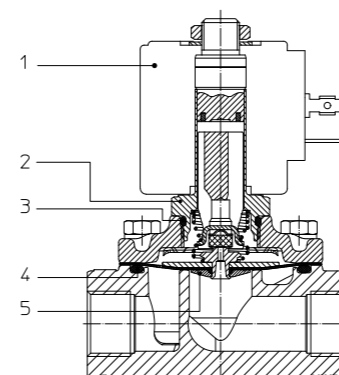


SERIES 178

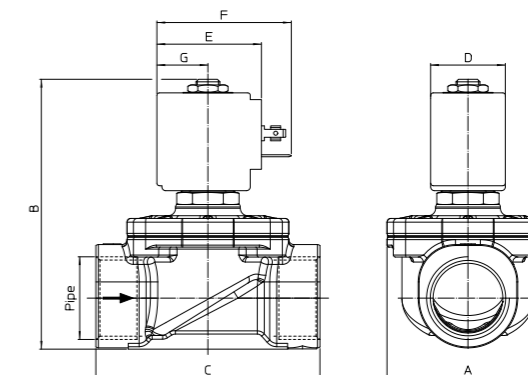
Solenoid valve 2 way normally closed with assisted-lift diaphragm in stainless steel AISI 316



SPARE PARTS LIST



OVERALL DIMENSION



CONSTRUCTION

BODY AND COVER	AISI 316
ARMATURE TUBE	AISI 316
PLUNGERS AND CORE	AISI 430FR
SPRINGS	AISI 302
SHADING RING	Silver
SEAL MATERIAL	FPM NBR (on request)

FEATURES

Maximum allowable pressure PS 16bar ^③
Maximum fluid viscosity 25cSt (mm ² /s)
Ambient temperature: from -10°C to +80°C according to the coil
Preferred mounting position with vertical coil above

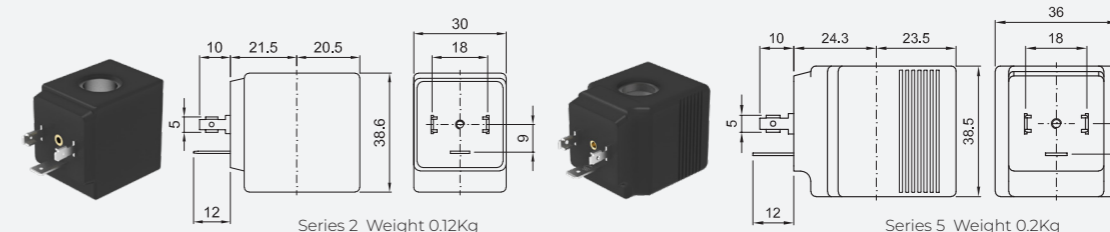
CODE ① ②	CONNECTION G ISO 228	ORIFICE [mm]	KV m ³ /h	DIFFERENTIAL PRESSURE [bar]		NOMINAL POWER	COIL		SEAL ①	TEMP. RANGE [°C]	
				MIN.	MAX.		SERIES	WIDTH			
											AC
E178CV15///...	3/8"	15	2.4	0	14	6	10W	2	30	FPM=V	-10 +140
					-	14	27W	5	36		
E178DV16///...	1/2"	16	3	0	14	6	10W	2	30	FPM=V	-10 +140
					-	14	27W	5	36		
E178EV20///...	3/4"	20	3.6	0	14	6	10W	2	30	FPM=V	-10 +140
					-	14	27W	5	36		
E178FV25///...	1"	25	8.4	0	14	3	10W	2	30	FPM=V	-10 +140
					-	8	14W	5	36		
E178GV35///...	1 1/4"	35	18	0	8	-	10W	2	30	FPM=V	-10 +140
					14	2	14W	5	36		
E178HV40///...	1 1/2"	40	19.2	0	8	-	10W	2	30	FPM=V	-10 +140
					14	2	14W	5	36		
					-	7	27W	5	36		

① Seal
② Coil
③ The maximum allowable pressure PS for steam is 2,5bar (gauge pressure)

OPTIONS

UL certified coils
NPT connections
ATEX Ex d coils
Degreased for use with oxygen

COILS ②	ALTERNATING CURRENT 50/60Hz (V)						DIRECT CURRENT (V)		ELECTRICAL CONNECTION	CONNECTORS	
	12	24	48	110	220 230	240	380	12			24
Series 2 Width 30-10W	20A	20B	20C	20D	20E	20F	20G	200	201	DIN 43650A	PG9 code 10349000 or PG11 code 10349001
Series 5 Width 36-14W	-	U55B UL US	-	U55D UL US	-	U55F UL US	-	U550 UL US	U551 UL US		
Series 5 Width 36-27W	52A	52B	52C	52D	52E	52F	52G	520	521		



DESCRIPTION

Insulation class
Series 2 = F Series 5 = H
Voltage tolerance
AC +15% -10%
DC ± 10%
Protection class
IP65 with connector fitted
IP00 without connector

OPTIONS

Class H insulation (series 2)
Cable attached
Special coil voltage
Special coil powers
UL certified coils
(for coil details see section 8)