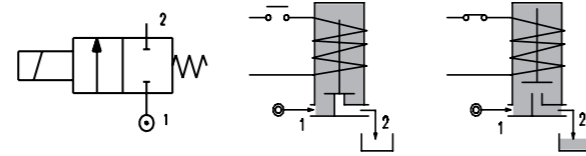
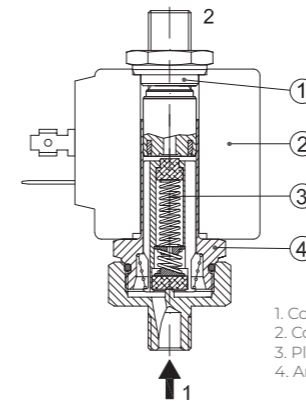


# SERIES 203

Solenoid valve 2 way normally open direct acting poppet type

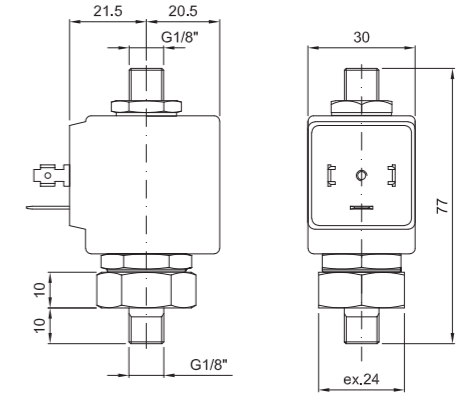


## SPARE PARTS LIST



- 1. Coil fixing nut
- 2. Coil
- 3. Plunger
- 4. Armature tube assembly

## OVERALL DIMENSION



### CONSTRUCTION

BODY	Brass
ARMATURE TUBE	AISI 303
PLUNGER AND CORE	AISI 430FR
SPRINGS	AISI 302
SEAL MATERIAL	NBR - FPM - EPDM

### FEATURES

Maximum allowable pressure PS 50bar
Maximum fluid viscosity 25cSt (mm2/s)
Ambient temperature: from -10°C to +80°C according to the coil
Universal mounting position

CODE ① ②	CONNECTION G ISO 228	ORIFICE [mm]	KV m3/h	DIFFERENTIAL PRESSURE [bar]		NOMINAL POWER			COIL		SEAL ①	TEMP. RANGE [°C]	
				MIN.	MAX.	AC	VA	DC	SERIES	WIDTH			
E203A...20///...	1/8"	2	0.1	0	16	16					NBR=B	-10 +90	
E203A...25///...		2.5	0.14	0	13	13	20	15	10	2	30	EPDM=E	-10 +140
E203A...29///...		2.9	0.17	0	10	10						FPM=V	-10 +140

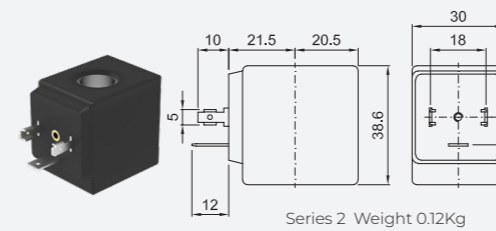
- ① Seal
- ② Coil

Example: E203AV25///20E FPM seal  
Coil 230V 50/60Hz

### OPTIONS

- Electroless nickel plating
- ATEX certified coils

COILS ③	ALTERNATING CURRENT 50/60Hz (V)						DIRECT CURRENT (V)			ELECTRICAL CONNECTION	CONNECTORS						
	12	24	48	110	120	220 230	240	380	12			24	48				
Series 2 Width 30	20A	20B	U25B ATEX	20C	20D	U25D ATEX	20E	20F	U25F ATEX	20G	200	U250 ATEX	201	U251 ATEX	202	DIN 43650A	PG9 CODE 10349000



Series 2 Weight 0.12Kg

**DESCRIPTION**  
Class F insulation  
Voltage tolerance  
AC +15% -10%  
DC ± 10%  
Protection class  
IP65 with connector fitted  
IP00 without connector  
Continuous service ED100%

**OPTIONS**  
Class H insulation  
Cable attached  
Special coil voltage  
Special coil powers  
ATEX certified coils  
(for coil details see section 8)