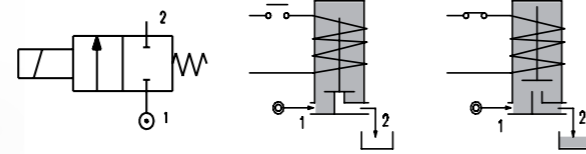
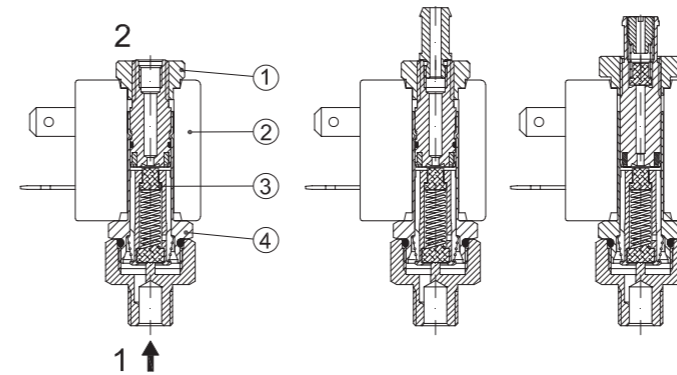


# SERIES 204

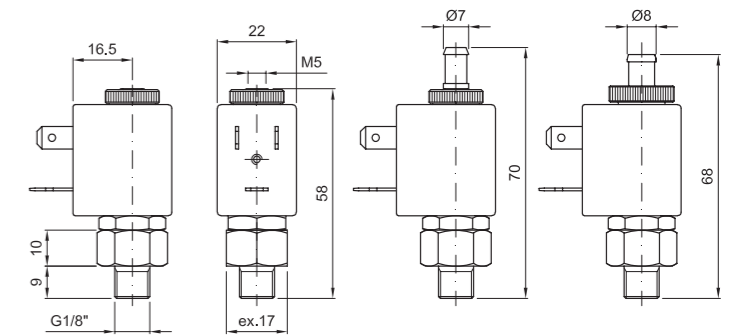
Solenoid valve 2 way normally open direct acting poppet type



## SPARE PARTS LIST



## OVERALL DIMENSION



### CONSTRUCTION

BODY	Brass
ARMATURE TUBE	Brass
PLUNGER AND CORE	AISI 430FR
SPRINGS	AISI 302
SEAL MATERIAL	NBR - FPM - EPDM

### FEATURES

Maximum allowable pressure PS 50bar
Maximum fluid viscosity 25cSt (mm <sup>2</sup> /s)
Ambient temperature: from -10°C to +80°C according to the coil
Universal mounting position

CODE	CONNECTION G ISO 228	ORIFICE [mm]	KV m <sup>3</sup> /h	DIFFERENTIAL PRESSURE [bar]		NOMINAL POWER			COIL		SEAL	TEMP. RANGE [°C]
				MIN.	MAX.	AC	VA	DC	SERIES	WIDTH		
				AC	DC	INRUSH	HOLDING	WATT				
<b>USER PORT WITH M5 CONNECTION</b>												
E204A...15//...	1/8"	1.5	0.06	0	16	16	12	8	6.5	3	NBR=B	-10 +90
E204A...17//...		1.7	0.08	0	12	12						
<b>USER PORT WITH HOSETAIL CONNECTION</b>												
E204A...15/1/...	1/8"	1.5	0.06	0	16	16	12	8	6.5	3	EPDM=E	-10 +140
E204A...17/1/...		1.7	0.08	0	12	12						
<b>USER PORT WITH HOSETAIL CONNECTION AND RELIEF VALVE</b>												
E204A...15/3/...	1/8"	1.5	0.06	0	16	16	12	8	6.5	3	FPM=V	-10 +140
E204A...17/3/...		1.7	0.08	0	12	12						

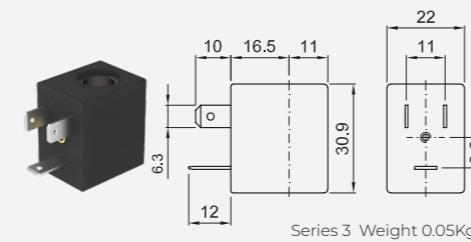
① Seal  
② Coil

Example: E204AB17//301 NBR seal  
Coil 24V DC

### OPTIONS

Stainless steel armature tube
Electroless nickel plating
Explosion proof coil according to ATEX - EExmII Series 7
User port with hosetail connection
ATEX certified coils

COILS	ALTERNATING CURRENT 50/60Hz (V)							DIRECT CURRENT (V)			ELECTRICAL CONNECTION	CONNECTORS						
	12	24	48	110	120	220 230	240	380	12	24			48					
Series 3 Width 22	30A	30B	U35B	30C	30D	U35D	30E	V32E	30F	U35F	30G	300	U350	301	U351	302	DIN 46244	PG9 CODE 10348000



**DESCRIPTION**  
Class F insulation  
Voltage tolerance  
AC +15% -10%  
DC ± 10%  
Protection class  
IP65 with connector fitted  
IP00 without connector  
Continuous service ED100%

**OPTIONS**  
Class H insulation  
Cable attached  
Special coil voltage  
Special coil powers  
ATEX certified coils  
(for coil details see section 8)