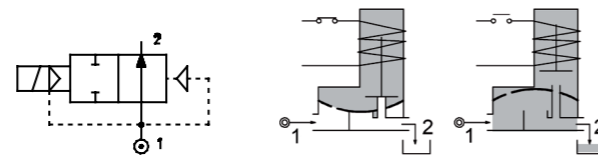
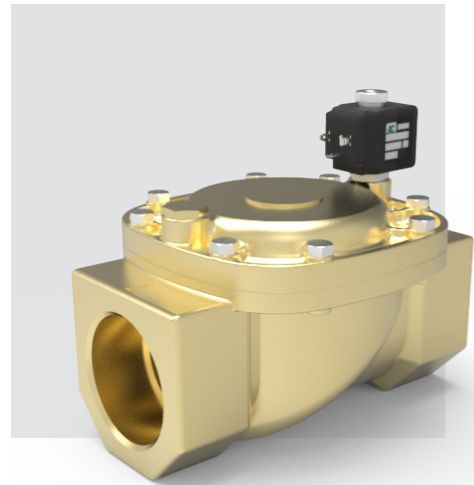
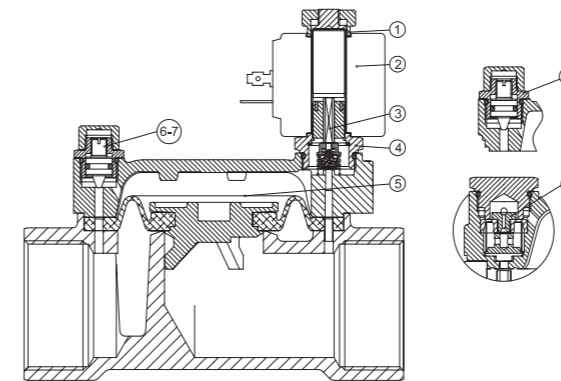


# SERIES 207

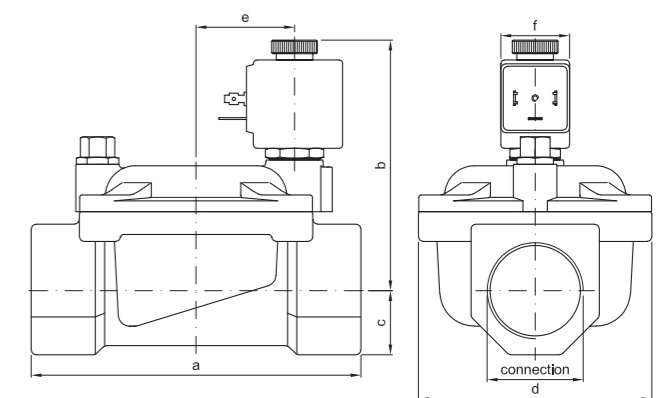
Solenoid valve 2 way normally closed with servo-assisted diaphragm



## SPARE PARTS LIST



## OVERALL DIMENSION



### CONSTRUCTION

<b>BODY AND COVER</b>	Brass - Low Lead Brass NSF 61
<b>ARMATURE TUBE</b>	Brass
<b>PLUNGER AND CORE</b>	AISI 430FR
<b>SPRINGS</b>	AISI 302
<b>SEAL MATERIAL</b>	NBR - FPM - EPDM

### FEATURES

Minimum differential pressure 0.15÷3bar
Maximum allowable pressure PS 20bar@
Maximum fluid viscosity 25cSt (mm2/s)
Ambient temperature: from -10°C to +80°C according to the coil
Preferred mounting position with vertical coil above

CODE ① ②	CONNECTION G ISO 228	ORIFICE [mm]	KV m3/h	DIFFERENTIAL PRESSURE [bar]			NOMINAL POWER			COIL		SEAL ①	TEMP. RANGE [°C]
				MIN.	MAX.		AC	VA	DC	SERIES	WIDTH		
					AC	DC							
E207G...37///...	1"1/4	37	18	0.15	10	10				2	30	NBR=B EPDM=E EPDM=M ⑤ FPM=V	-10 +90 -10 +140 -10 +140
E207H...37///...	1"1/2	37	21	0.15	10	10	20	15	10	2	30		
E207I...50///...	2"	50	36	0.15	10	10							

Example: E207HB37///201 NBR seal  
Coil 24V DC

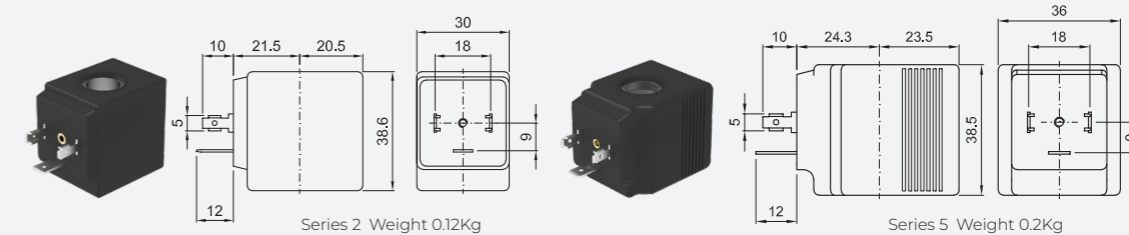
- ① Seal
  - ② Coil
  - ③ Reinforced diaphragm
  - ④ REMARK
- The maximum allowable pressure PS for steam 2,5bar (gauge pressure)  
⑤ EPMD certified WRAS  
G2"1/2 e G3" SOLENOID VALVES

For applications with fluids listed in chapter 3 / group 1 of the PED Directive 2014/68 / EU (potentially hazardous or explosive fluids / mixtures) consider a PS value reduced to 15 bar max.

### OPTIONS

- UL certified coils
- Electroless nickel plating

COILS ③	ALTERNATING CURRENT 50/60Hz (V)								DIRECT CURRENT (V)			ELECTRICAL CONNECTION	CONNECTORS		
	12	24	48	110	120	220 230	240	380	12	24	48				
Series 2 Width 30	20A	20B UL	U25B UL	20C	20D UL	20E	20F UL	20G	200	U250 UL	201 UL	U251 UL	202	DIN 43650A	PG9 CODE 10349000
Series 5 Width 36	52A	52B UL	U55B UL	52C	52D UL	52E	52F UL	52G	520	U550 UL	521 UL	U551 UL	522	DIN 43650A	PG9 CODE 10349001



### DESCRIPTION

Insulation class  
Series 2 =F Series 5=H  
Voltage tolerance  
AC +15% -10%  
DC ±10%  
Protection class  
IP65 with connector fitted  
IP00 without connector

### OPTIONS

Class H insulation (series 2)  
Cable attached  
Special coil voltage  
Special coil powers  
UL certified coils  
(for coil details see section 8)