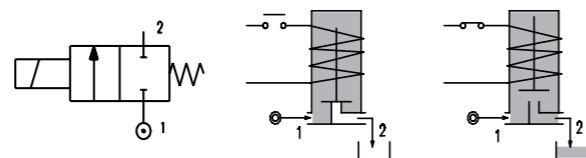
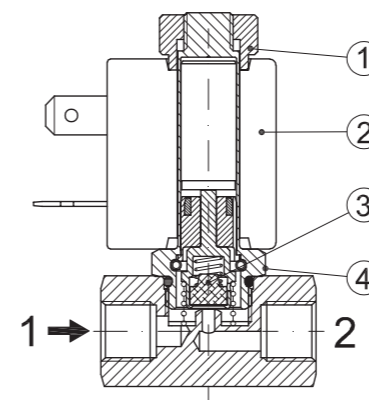


# SERIES 211

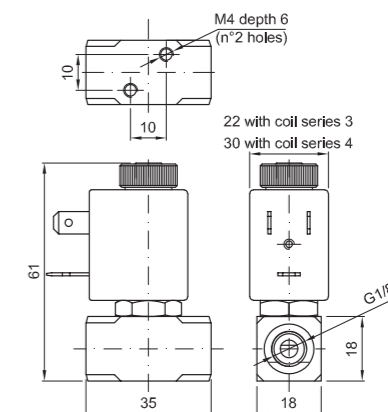
Solenoid valve 2 way normally open direct acting poppet type



## SPARE PARTS LIST



## OVERALL DIMENSION



### CONSTRUCTION

BODY	AISI 303
ARMATURE TUBE	AISI 303
PLUNGER AND CORE	AISI 430FR
SPRINGS	AISI 302
SEAL MATERIAL	NBR - FPM - EPDM

### FEATURES

Maximum allowable pressure PS 50bar <sup>④</sup>
Maximum fluid viscosity 25cSt (mm <sup>2</sup> /s)
Ambient temperature: from -10°C to +80°C according to the coil
Universal mounting position

ON REQUEST: Versions for use with fluid temperature at -40°C  
Manual override

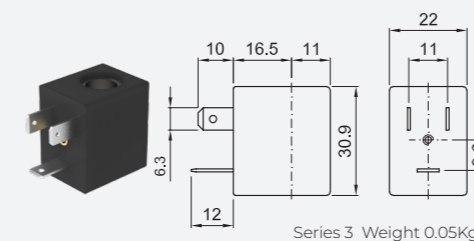
CODE ① ②	CONNECTION G ISO 228	ORIFICE [mm]	KV m <sup>3</sup> /h	DIFFERENTIAL PRESSURE [bar]		NOMINAL POWER			COIL		SEAL ①	TEMP. RANGE [°C]	
				MIN.	MAX.	AC	VA	DC	SERIES	WIDTH			
													AC
E211A...12///...	1/8"	1.2	0.04	0	19	19	12	8	6.5	3	22	NBR=B	-10 +90
E211A...15///...		1.5	0.06	0	14	14							
E211A...20///...		2	0.09	0	8	8							
E211A...25///...		2.5	0.14	0	4.5	4.5							
E211A...31///...		3.1	0.19	0	2.5	2.5							

① Seal Example: E211A15///300 NBR seal  
 ② Coil Coil 12V DC  
 ③ Direct current (DC) series 3 coil available only without UL certification  
 ④ The maximum allowable pressure PS for steam is 2.5bar (gauge pressure)

### OPTIONS

Series 7 explosion proof coil according to ATEX - EExmII  
 Versions for use with industrial oxygen  
 UL certified coils

COILS ②	ALTERNATING CURRENT 50/60Hz (V)						DIRECT CURRENT (V)			ELECTRICAL CONNECTION	CONNECTORS							
	12	24	48	110	120	220 230	240	380	12			24	48					
Series 3 Width 22	30A	30B	U35B UL	30C	30D	U35D UL	30E	V32E UL	30F	U35F UL	30G	300	U350 UL	301	U351 UL	302	DIN 46244	PG9 CODE 10348000



**DESCRIPTION**  
 Class F insulation  
 Voltage tolerance  
 AC +15% -10%  
 DC ± 10%  
 Protection class  
 IP65 with connector fitted  
 IP00 without connector  
 Continuous service ED100%

**OPTIONS**  
 Class H insulation  
 Cable attached  
 Special coil voltage  
 Special coil powers  
 UL certified coils  
 (for coil details see section 8)