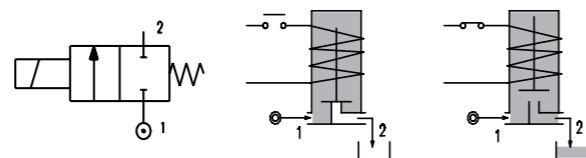
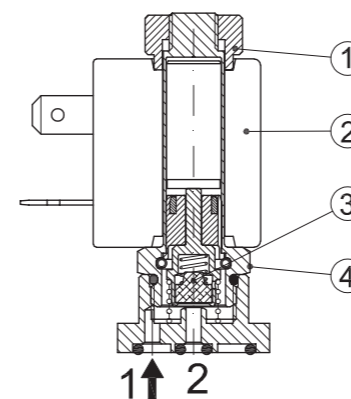


SERIES 214

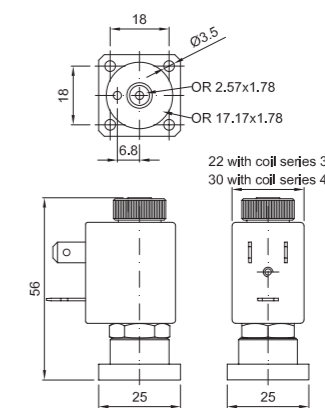
Solenoid valve 2 way normally open direct acting poppet type - Flange fixing



SPARE PARTS LIST



OVERALL DIMENSION



CONSTRUCTION

BODY	Brass
ARMATURE TUBE	Brass
PLUNGER AND CORE	AISI 430FR
SPRINGS	AISI 302
SEAL MATERIAL	NBR - FPM - EPDM

FEATURES

Maximum allowable pressure PS 50bar
Maximum fluid viscosity 25cSt (mm ² /s)
Ambient temperature: from -10°C to +80°C according to the coil
Universal mounting position

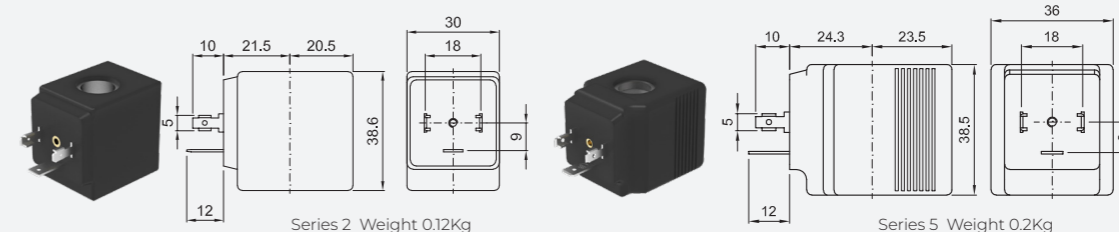
ON REQUEST: Versions for use with fluid temperature at -40°C Manual override

CODE ① ②	FLANGE ø32	ORIFICE [mm]	KV m ³ /h	DIFFERENTIAL PRESSURE [bar]			NOMINAL POWER			COIL		SEAL ①	TEMP. RANGE [°C]		
				MIN.	MAX.		AC	VA	DC	SERIES	WIDTH				
					AC	DC								INRUSH	HOLDING
E214X ...15///...	ø 32	1.5	0.07	0	23	-	20	15	-	2	30	NBR=B	-10 +90		
E214X ...20///...		2	0.1	0	17	-									
E214X ...25///...		2.5	0.15	0	12	-									
E214X ...30///...		3	0.25	0	9	-									
E214X ...35///...		3.5	0.32	0	7	-									
E214X ...40///...	4	0.36	0	5.5	-										
E214X ...45///...	4.5	0.41	0	4.5	-										
D214X ...15/5/...	ø 32	1.5	0.07	0	-	18	-	-	10	2	30			EPDM=E	-10 +140
D214X ...20/5/...		2	0.1	0	-	11									
D214X ...25/5/...		2.5	0.15	0	-	7									
D214X ...30/5/...		3	0.25	0	-	6.5									
D214X ...35/5/...		3.5	0.32	0	-	4									
D214X ...40/5/...	4	0.36	0	-	3.5										
D214X ...45/5/...	4.5	0.41	0	-	3										
E214X ...15///...	ø 32	1.5	0.07	0	23	23	40	30	27	5	36				
E214X ...20///...		2	0.1	0	17	17									
E214X ...25///...		2.5	0.15	0	12	12									
E214X ...30///...		3	0.25	0	9	9									
E214X ...35///...		3.5	0.32	0	7	7									
E214X ...40///...	4	0.36	0	5.5	5.5										
E214X ...45///...	4.5	0.41	0	4.5	4.5										

OPTIONS

- Stainless steel armature tube
- Electroless nickel plating
- ATEX certified coils

COILS ③	ALTERNATING CURRENT 50/60Hz (V)								DIRECT CURRENT (V)			ELECTRICAL CONNECTION	CONNECTORS		
	12	24	48	110	120	220 230	240	380	12	24	48				
Series 2 Width 30	20A	20B U25B ATEX	20C	20D	U25D ATEX	20E	20F U25F ATEX	20G	200	U250 ATEX	201	U251 ATEX	202	DIN 43650A	PG9 CODE 10349000
Series 5 Width 36	52A	52B U55B ATEX	52C	52D	U55D ATEX	52E	52F U55F ATEX	52G	520	U550 ATEX	521	U551 ATEX	522	DIN 43650A	PG9 CODE 10349001



DESCRIPTION

Insulation class
Series 2 =F Series 5=H
Voltage tolerance
AC +15% -10%
DC ± 10%
Protection class
IP65 with connector fitted
IP00 without connector

OPTIONS

Class H insulation (series 2)
Cable attached
Special coil voltage
Special coil powers
ATEX certified coils
(for coil details see section 8)

① Seal
② Coil
③ The maximum allowable pressure PS for steam is 2.5bar (gauge pressure)
Example: E214XB20///20E NBR seal
Coil 230V 50/60Hz