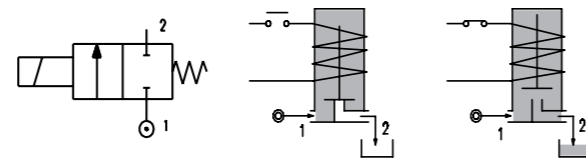
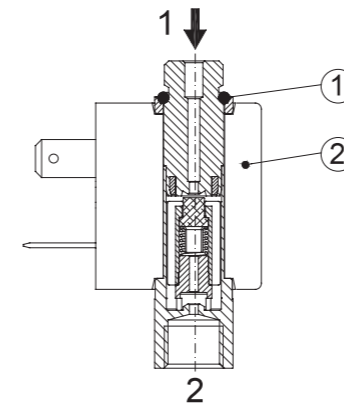


SERIES 230

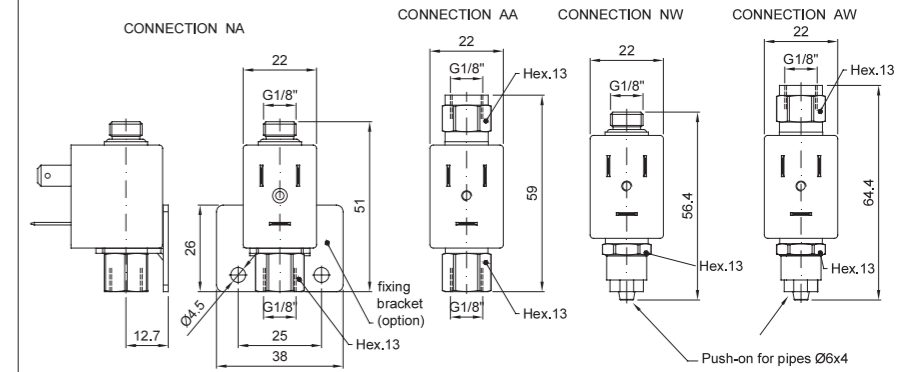
Solenoid valve in line normally open direct acting poppet type.



SPARE PARTS LIST



OVERALL DIMENSION



CONSTRUCTION

BODY	AISI 303
ARMATURE TUBE	AISI 303
PLUNGER AND CORE	AISI 430FR
SPRINGS	AISI 302
SEAL MATERIAL	NBR - FPM - EPDM

FEATURES

Maximum allowable pressure PS 15bar
Maximum fluid viscosity 25cSt (mm ² /s)
Ambient temperature: from -10°C to +80°C according to the coil
Universal mounting position

CONFIGURATIONS ①

G1/8" MALE - PUSH-ON FOR PIPES Ø6x4 NW	G1/8" MALE - G1/8" FEMALE NA	G1/8" FEMALE - PUSH-ON FOR PIPES Ø6x4 AW	G1/8" FEMALE - G1/8" FEMALE AA

CODE ①②③	ORIFICE [mm]	KV m ³ /h	DIFFERENTIAL PRESSURE [bar]			ELECTRICAL DATA		COIL		SEAL ②	TEMP. RANGE [°C]
			MIN.	MAX.		VOLTAGE (V)	POWER	SERIES	WIDTH		
E230...15///...	1.5	0.05	0	10	10	All standard voltages	6.5W or 8VA	3	22	NBR=B FPM=V EPDM=E	-10 +90 -10 +140 -10 +140

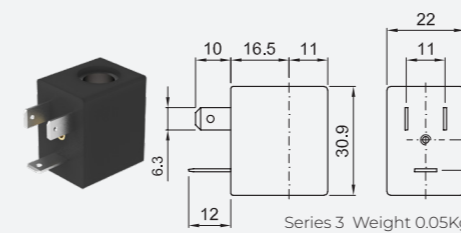
- ① Configuration
- ② Seal
- ③ Coil

Example: E230NAB15///30B - G1/8" male - G1/8" female connections
NBR seal - 24V 50/60Hz 8VA

OPTIONS

Mounting bracket
Versions for use with industrial oxygen
UL certified coils

COILS ③	ALTERNATING CURRENT 50/60Hz (V)						DIRECT CURRENT (V)			ELECTRICAL CONNECTION	CONNECTORS	
	12	24	48	110	220 230	240 380	12	24	48			
Series 3 Width 22 6.5W or 8VA	30A	30B U35B UL US	30C	30D U35D UL US	30E	30F U35F UL US	30G	300 U350 UL US	301 U351 UL US	302	DIN 46244	PG9 CODE 10348000



DESCRIPTION
Class F insulation
Voltage tolerance
AC +15% -10%
DC ± 10%
Protection class
IP65 with connector fitted
IP00 without connector
Continuous service ED100%

OPTIONS
Class H insulation
Cable attached
Special coil voltage
Special coil powers
UL certified coils
(for coil details see section 8)