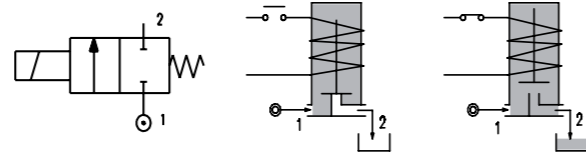
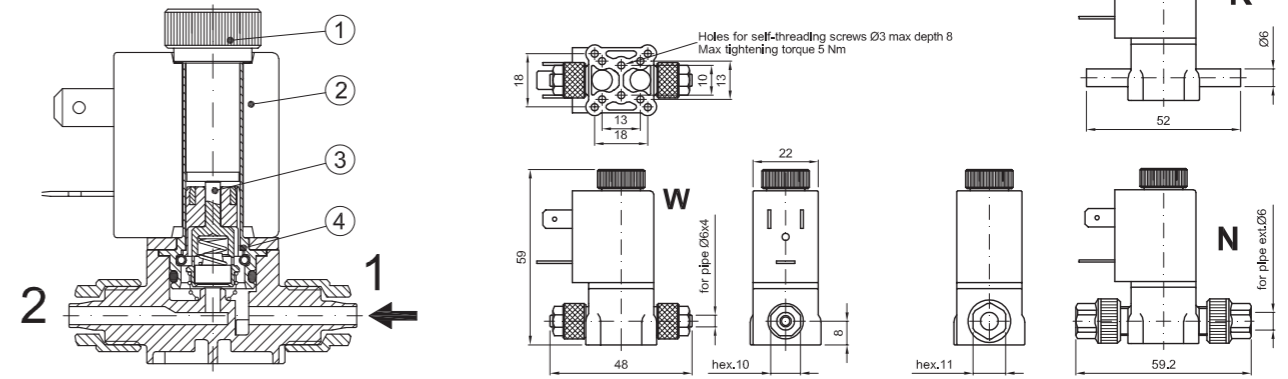


SERIES 235

Solenoid valve 2 way normally open direct acting poppet type, suitable for food applications and all compatible fluids.



SPARE PARTS LIST



CONSTRUCTION

BODY	Thermoplastic polymer ACS, KTW, W270, WRAS, NSF, FDA certified
ARMATURE TUBE	Brass chemically nickel plated
PLUNGER AND CORE	AISI 430FR
SPRINGS	AISI 302
SEAL MATERIAL	NBR - FPM - EPDM

FEATURES

Maximum allowable pressure PS 20bar Φ
Maximum fluid viscosity 25cSt (mm ² /s)
Ambient temperature: from -10°C to +80°C according to the coil
Universal mounting position

CONNECTION

K	N	P	W ^④	Y	Z
SPIGGOT	G1/8" male thread with NUT for flexible pipes	HOSETAIL for flexible pipes	COMPRESSION for flexible and semiflexible pipes	PUSH IN for semiflexible pipes Φ ext 6	PUSH IN for semiflexible pipes Φ ext 4

CODE ^{①②③}	CONNECTION G ISO 228	ORIFICE [mm]	KV m ³ /h	DIFFERENTIAL PRESSURE [bar]			NOMINAL POWER			COIL		SEAL ^②	TEMP. RANGE [°C]
				MIN.	MAX.		AC	VA	DC	SERIES	WIDTH		
					AC	DC							
E235...15///...	K-N-P-W-Y-Z	1.5	0.06	0	14	14							
E235...20///...	K-N-P-W-Y-Z	2	0.09	0	8	8	12	8	6.5	3	22	NBR=B EPDM=E FPM=V	-10 +90 -10 +140 -10 +140
E235...25///...	K-N-P-W-Y-Z	2.5	0.14	0	4.5	4.5							

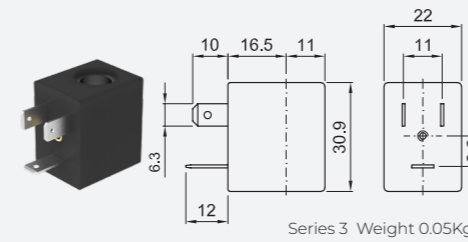
- ① Seal
- ② Coil
- ③ Only for connection "W" E235W.../1/...
- ④ The maximum allowable pressure PS for steam is 2.5bar (gauge pressure)

The maximum allowable pressure is related to the type of connection and pipe used
 ** The temperature range is related to the material of the seals (NBR, EPDM, FPM), and the valves' body.
 Please contact us concerning the temperature range referred to the different types of connection.

OPTIONS

Stainless steel armature tube
Type N connection without nut
UL certified coils

COILS ^②	ALTERNATING CURRENT 50/60Hz (V)								DIRECT CURRENT (V)			ELECTRICAL CONNECTION	CONNECTORS					
	12	24	48	110	120	220 230	240	380	12	24	48							
Series 3 Width 22	30A	30B	U35B UL	30C	30D	U35D UL	30E	V32E UL	30F	U35F UL	30G	300	U350 UL	301	U351 UL	302	DIN 46244	PG9 CODE 10348000



DESCRIPTION
 Class F insulation
 Voltage tolerance
 AC +15% -10%
 DC \pm 10%
 Protection class
 IP65 with connector fitted
 IP00 without connector
 Continuous service ED100%

OPTIONS
 Class H insulation
 Cable attached
 Special coil voltage
 Special coil powers
 UL certified coils
 (for coil details see section 8)