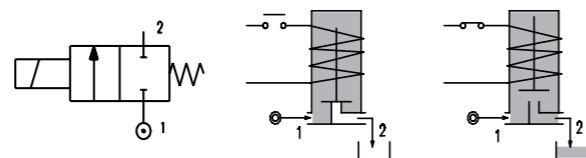
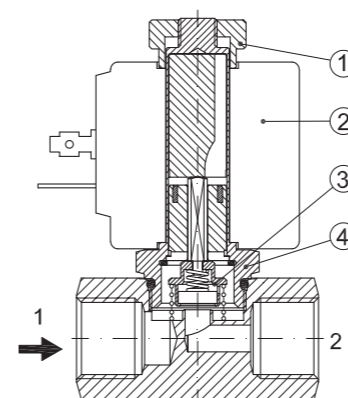


SERIES 270

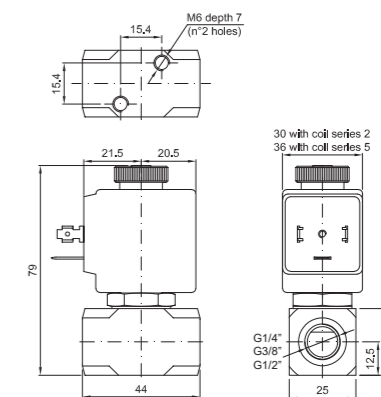
Solenoid valve 2 way normally open in stainless steel AISI 316 direct acting poppet type



SPARE PARTS LIST



OVERALL DIMENSION



CONSTRUCTION

BODY	AISI 316
ARMATURE TUBE	AISI 316
PLUNGER AND CORE	AISI 430FR
SHADING RING	Silver
SPRINGS	AISI 302
SEAL MATERIAL	NBR - FPM - EPDM - PTFE - FFKM (Kalrez)

FEATURES

Maximum allowable pressure PS 50bar*
Maximum fluid viscosity 25cSt (mm ² /s)
Ambient temperature: from -10°C to +80°C according to the coil
Universal mounting position

ON REQUEST: Versions for use with fluid temperature at -40°C

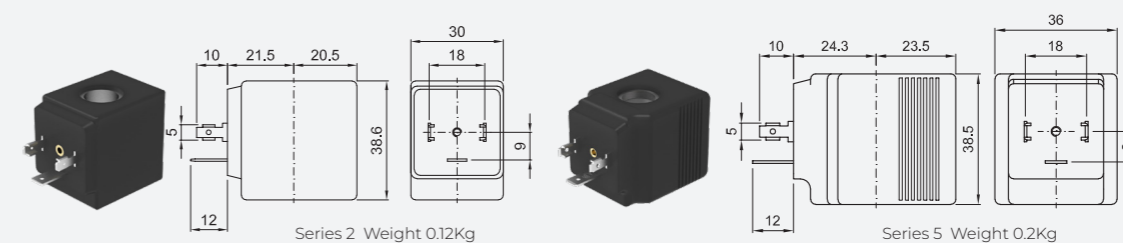
CODE ①②③	CONNECTION G ISO 228	ORIFICE [mm]	KV m ³ /h	DIFFERENTIAL PRESSURE [bar]		NOMINAL POWER			COIL		SEAL ④	TEMP. RANGE [°C]	
				MIN.	MAX.	AC INRUSH	VA HOLDING	DC WATT	SERIES	WIDTH			
													AC
E270...15///...	1/4" 3/8" 1/2"	1.5	0.07	0	23	-	20	15	-	2	30	NBR=B	-10 +90
E270...20///...		2	0.1	0	17	-							
E270...25///...		2.5	0.15	0	12	-							
E270...30///...		3	0.25	0	9	-							
E270...35///...		3.5	0.32	0	7	-							
E270...40///...		4	0.36	0	5.5	-							
E270...45///...	4.5	0.41	0	4.5	-								
D270...15///...	1/4" 3/8" 1/2"	1.5	0.07	0	-	18	-	-	10	2	30	EPDM=E	-10 +140
D270...20///...		2	0.1	0	-	11							
D270...25///...		2.5	0.15	0	-	7							
D270...30///...		3	0.25	0	-	6.5							
D270...35///...		3.5	0.32	0	-	4							
D270...40///...		4	0.36	0	-	3.5							
D270...45///...	4.5	0.41	0	-	3								
E270...15///...	1/4" 3/8" 1/2"	1.5	0.07	0	23	23	40	30	27	5	36	FPM=V	-10 +140
E270...20///...		2	0.1	0	17	17							
E270...25///...		2.5	0.15	0	12	12							
E270...30///...		3	0.25	0	9	9							
E270...35///...		3.5	0.32	0	7	7							
E270...40///...		4	0.36	0	5.5	5.5							
E270...45///...	4.5	0.41	0	4.5	4.5								

OPTIONS

Versions for use with industrial oxygen

UL certified coils

COILS ⑤	ALTERNATING CURRENT 50/60Hz (V)							DIRECT CURRENT (V)			ELECTRICAL CONNECTION	CONNECTORS					
	12	24	48	110	120	220 230	240	380	12	24			48				
Series 2 Width 30	20A	20B	U25B	20C	20D	U25D	20E	20F	U25F	20G	200	U250	201	U251	202	DIN 43650A	PG9 CODE 10349000
Series 5 Width 36	52A	52B	U55B	52C	52D	U55D	52E	52F	U55F	52G	520	U550	521	U551	522	DIN 43650A	PG9 CODE 10349001



DESCRIPTION

Insulation class
Series 2 =F Series 5=H
Voltage tolerance
AC +15% -10%
DC ± 10%
Protection class
IP65 with connector fitted
IP00 without connector

OPTIONS

Class H insulation (series 2)
Cable attached
Special coil voltage
Special coil powers
UL certified coils
(for coil details see section 8)

- ① Connection: B=1/4", C=3/8", D=1/2"
- ② Seal
- ③ Coil
- ④ The maximum allowable pressure PS for steam is 2.5bar (gauge pressure)

Example: D270BB20///201 connection 1/4", NBR seal
Coil 24V DC