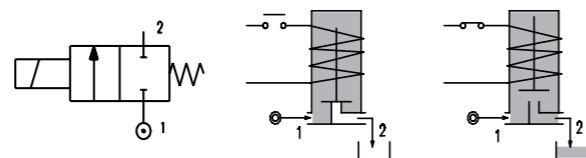
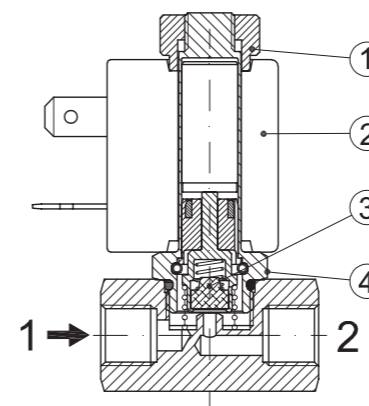


SERIES 271

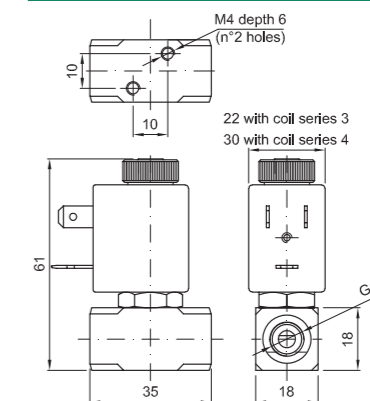
Solenoid valve 2 way normally open in stainless steel AISI 316 direct acting poppet type



SPARE PARTS LIST



OVERALL DIMENSION



CONSTRUCTION

BODY	AISI 316
ARMATURE TUBE	AISI 316
PLUNGER AND CORE	AISI 430FR
SHADING RING	Silver
SPRINGS	AISI 316
SEAL MATERIAL	NBR - FPM - EPDM

FEATURES

Maximum allowable pressure PS 50bar
Maximum fluid viscosity 25cSt (mm2/s)
Ambient temperature: from -10°C to +80°C according to the coil
Universal mounting position

ON REQUEST: Versions for use with fluid temperature at -40°C

CODE ① ②	CONNECTION G ISO 228	ORIFICE [mm]	KV m3/h	DIFFERENTIAL PRESSURE [bar]		NOMINAL POWER			COIL		SEAL ③	TEMP. RANGE [°C]	
				MIN.	MAX.	AC	VA	DC	SERIES	WIDTH			
													AC
E271A...12///...	1/8"	1.2	0.04	0	19	19	12	8	6.5	3	22	NBR=B EPDM=E FPM=V	-10 +90 -10 +140 -10 +140
E271A...15///...		1.5	0.06	0	14	14							
E271A...20///...		2	0.09	0	8	8							
E271A...25///...		2.5	0.14	0	4.5	4.5							
E271A...31///...		3.1	0.19	0	2.5	2.5							

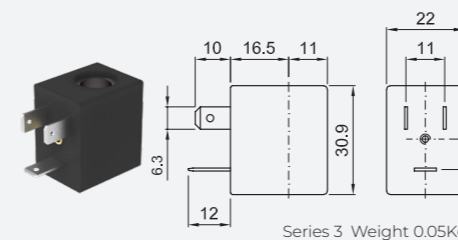
Example: E271AB15///300 NBR seal
Coil 12V DC

- ① Seal
- ② Coil
- ③ The maximum allowable pressure PS for steam is 2.5bar (gauge pressure)

OPTIONS

Versions for use with industrial oxygen
Series 7 explosion proof coil according to ATEX - EExmII
cULus certified coils

COILS ②	ALTERNATING CURRENT 50/60Hz (V)								DIRECT CURRENT (V)			ELECTRICAL CONNECTION	CONNECTORS					
	12	24	48	110	120	220 230	240	380	12	24	48							
Series 3 Width 22	30A	30B	U35B cULus	30C	30D	U35D cULus	30E	V32E cULus	30F	U35F cULus	30G	300	U350 cULus	301	U351 cULus	302	DIN 46244	PG9 CODE 10348000



DESCRIPTION
Class F insulation
Voltage tolerance
AC +15% -10%
DC ± 10%
Protection class
IP65 with connector fitted
IP00 without connector
Continuous service ED100%

OPTIONS
Class H insulation
Cable attached
Special coil voltage
Special coil powers
cULus certified coils
(for coil details see section 8)