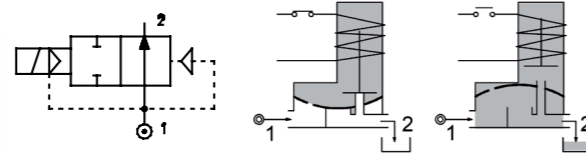
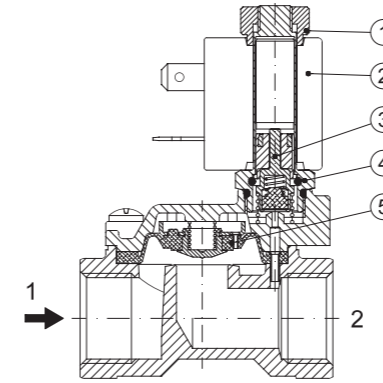


SERIES 277

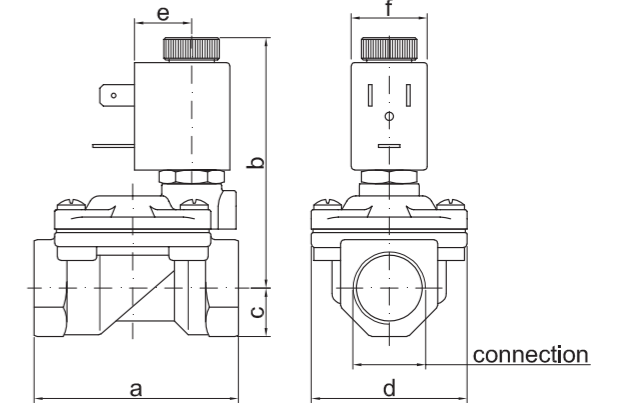
Solenoid valve 2 way normally open with servo-assisted diaphragm



SPARE PARTS LIST



OVERALL DIMENSION



CONSTRUCTION

BODY AND COVER	AISI 316
ARMATURE TUBE	AISI 303
PLUNGER AND CORE	AISI 430FR
SPRINGS	AISI 302
SEAL MATERIAL	NBR - FPM - EPDM

FEATURES

Minimum differential pressure 0.15bar
Maximum allowable pressure PS 25bar [Ⓟ]
Maximum fluid viscosity 25cSt (mm ² /s)
Ambient temperature: from -10°C to +80°C according to the coil
Preferred mounting position with vertical coil above

CODE ① ②	CONNECTION G ISO 228	ORIFICE [mm]	KV m ³ /h	DIFFERENTIAL PRESSURE [bar]			NOMINAL POWER			COIL		SEAL ①	TEMP. RANGE [°C]
				MIN.	MAX.		AC	VA	DC	SERIES	WIDTH		
					AC	DC							
E277C...12///...	3/8"	12	2.2	0.15	15	15	12	8	6.5	3	22	NBR=B	-10 +90
E277D...12///...	1/2"	12	2.5	0.15	15	15						EPDM=E	-10 +140
E277E...18///...	3/4"	18	5.5	0.15	13	13						FPM=V	-10 +140
E277F...25///...	1"	25	10.2	0.15	10	10							

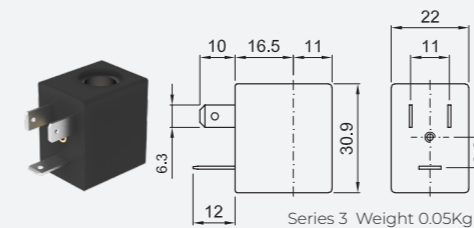
Example: E277DB12///301 NBR seal
Coil 24V DC

① Seal
② Coil
③ REMARK
The maximum allowable pressure PS for steam 2,5bar (gauge pressure)

OPTIONS

UL certified coils
Food approval seal material
Version with slow closing diaphragm
Version for use with oxygen
Silver shading ring
Series 7 explosion proof coil according to ATEX - EExmII

COILS ②	ALTERNATING CURRENT 50/60Hz (V)								DIRECT CURRENT (V)			ELECTRICAL CONNECTION	CONNECTORS					
	12	24	48	110	120	220 230	240	380	12	24	48							
Series 3 Width 22	30A	30B	U35B UL	30C	30D	U35D UL	30E	V32E UL	30F	U35F UL	30G	300	U350 UL	301	U351 UL	302	DIN 46244	PG9 CODE 10348000



Series 3 Weight 0.05Kg

DESCRIPTION
Class F insulation
Voltage tolerance
AC +15% -10%
DC ± 10%
Protection class
IP65 with connector fitted
IP00 without connector
Continuous service ED100%

OPTIONS
Class H insulation (series 2)
Cable attached
Special coil voltage
Special coil powers
UL certified coils
(for coil details see section 8)

CONNECTION	a	b	c	d	e	f	WEIGHT [kg]
G3/8"	59	73	14	45	16	22	0.30
G1/2"	59	73	14	45	16	22	0.32
G3/4"	79	76	18	55	16	22	0.55
G1"	96	85	20	72	16	22	0.95