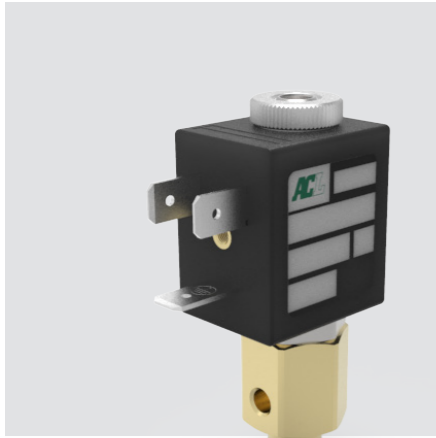
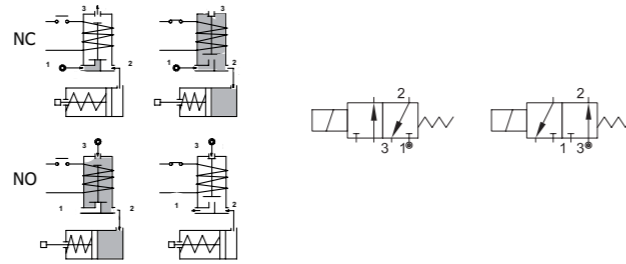
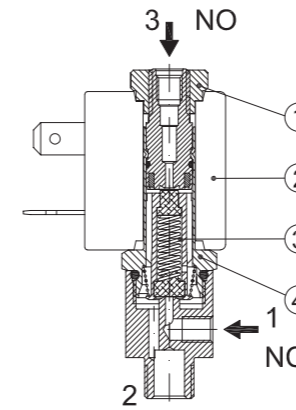


# SERIES 304

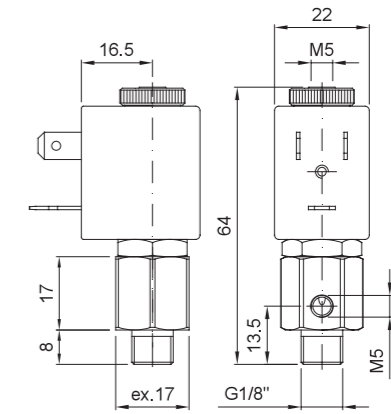
Solenoid valve 3 way direct acting poppet type



### SPARE PARTS LIST



### OVERALL DIMENSION



### CONSTRUCTION

BODY	Brass
ARMATURE TUBE	Brass
PLUNGER AND CORE	AISI 430FR
SPRINGS	AISI 302
SEAL MATERIAL	NBR - FPM - EPDM

### FEATURES

Maximum allowable pressure PS 50bar <sup>③</sup>
Maximum fluid viscosity 25cSt (mm <sup>2</sup> /s)
Ambient temperature: from -10°C to +80°C according to the coil
Universal mounting position

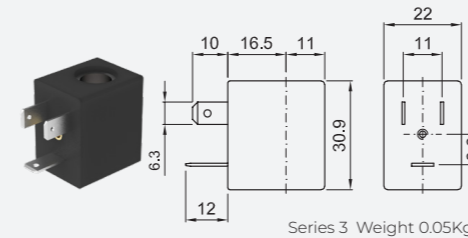
CODE ① ②	CONNECTION G ISO 228	ORIFICE [mm]		KV m <sup>3</sup> /h	DIFFERENTIAL PRESSURE [bar]		NOMINAL POWER			COIL		SEAL ①	TEMP. RANGE [°C]	
		1 → 2	2 → 3		MIN.	MAX.	AC	VA	DC	SERIES	WIDTH			
<b>NC NORMALLY CLOSED</b>														
E304A...15//...	M5-G1/8"	1.5	1.5	0.06	0	10	10	12	8	6.5	3	22	NBR=B	-10 +90
<b>NO NORMALLY OPEN</b>														
E304A...15/S/...	M5-G1/8"	1.5	1.5	0.06	0	10	10	12	8	6.5	3	22	FPM=V	-10 +140

① Seal Example: E304AB15///30B NBR seal  
 ② Coil Coil 24V 50/60Hz  
 ③ The maximum allowable pressure PS for steam 2,5bar (gauge pressure)

### OPTIONS

Stainless steel armature tube
Electroless nickel plating
Series 7 explosion proof coil according to ATEX - EExmI
Exhaust port with hositail connection
certified coils

COILS ②	ALTERNATING CURRENT 50/60Hz (V)								DIRECT CURRENT (V)			ELECTRICAL CONNECTION	CONNECTORS					
	12	24	48	110	120	220 230	240	380	12	24	48							
Series 3 Width 22	30A	30B	U35B	30C	30D	U35D	30E	V32E	30F	U35F	30G	300	U350	301	U351	302	DIN 46244	PG9 CODE 10348000



**DESCRIPTION**  
 Class F insulation  
 Voltage tolerance  
 AC +15% -10%  
 DC ± 10%  
 Protection class  
 IP65 with connector fitted  
 IP00 without connector  
 Continuous service ED100%

**OPTIONS**  
 Class H insulation  
 Cable attached  
 Special coil voltage  
 Special coil powers  
 certified coils  
 (for coil details see section 8)