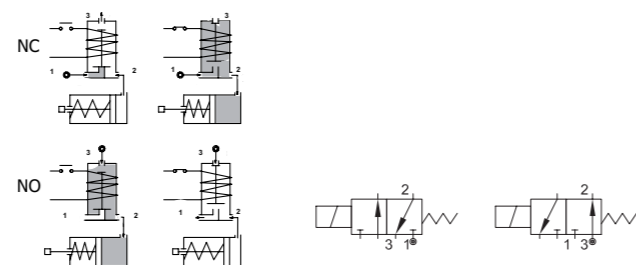
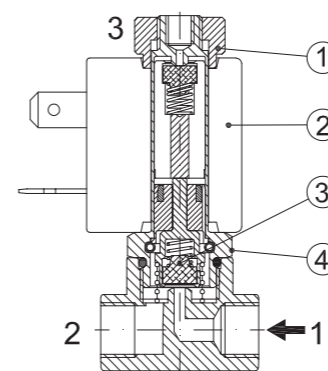


SERIES 307

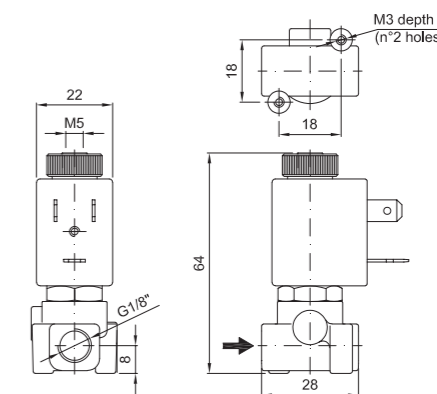
Solenoid valve 3 way normally open direct acting poppet type



SPARE PARTS LIST



OVERALL DIMENSION



CONSTRUCTION

BODY	Brass
ARMATURE TUBE	Brass
PLUNGER AND CORE	AISI 430FR
SPRINGS	AISI 302
SEAL MATERIAL	NBR - FPM - EPDM

FEATURES

Maximum allowable pressure PS 50bar ^③
Maximum fluid viscosity 25cSt (mm ² /s)
Ambient temperature: from -10°C to +80°C according to the coil
Universal mounting position

CODE ① ②	CONNECTION G ISO 228	ORIFICE [mm]		KV m ³ /h	DIFFERENTIAL PRESSURE [bar]		NOMINAL POWER			COIL		SEAL ①	TEMP. RANGE [°C]	
		1 → 2	2 → 3		MIN.	MAX.	AC	VA	DC	SERIES	WIDTH			
					AC	DC	INRUSH	HOLDING	WATT					
E307A...12///...	1/8"	1.2	1.2	0.04	0	12	8	12	8	6.5	3	22	NBR=B EPDM=E FPM=V	-10 +90 -10 +140 -10 +140
E307A...15///...		1.5	1.2	0.06	0	9	6							

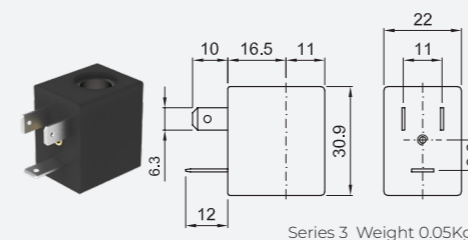
① Seal
② Coil
③ The maximum allowable pressure PS for steam 2,5bar (gauge pressure)

Example: E307AV15///301 FPM seal
Coil 24V DC

OPTIONS

Stainless steel armature tube
Electroless nickel plating
Series 7 explosion proof coil according to ATEX - EExmII
Exhaust port with hosedtail connection
certified coils

COILS ②	ALTERNATING CURRENT 50/60Hz (V)						DIRECT CURRENT (V)			ELECTRICAL CONNECTION	CONNECTORS							
	12	24	48	110	120	220 230	240	380	12			24	48					
Series 3 Width 22	30A	30B	U35B 	30C	30D	U35D 	30E	V32E 	30F	U35F 	30G	300	U350 	301	U351 	302	DIN 46244	PG9 CODE 10348000



DESCRIPTION
Class F insulation
Voltage tolerance
AC +15% -10%
DC ± 10%
Protection class
IP65 with connector fitted
IP00 without connector
Continuous service ED100%

OPTIONS
Class H insulation
Cable attached
Special coil voltage
Special coil powers
 certified coils
(for coil details see section 8)