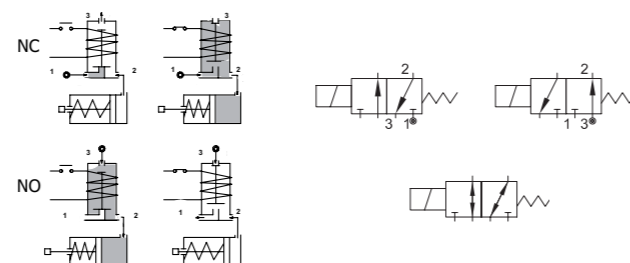
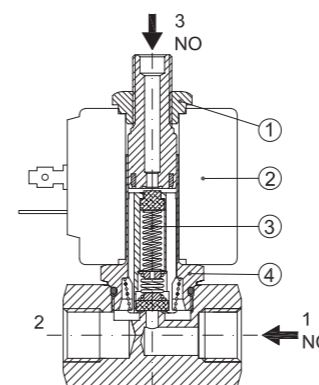


SERIES 310

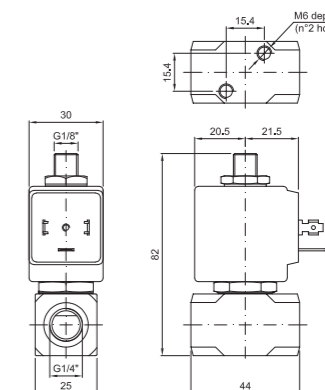
Solenoid valve 3 way direct acting poppet type



SPARE PARTS LIST



OVERALL DIMENSION



CONSTRUCTION

BODY	AISI 303
ARMATURE TUBE	AISI 303
PLUNGER AND CORE	AISI 430FR
SPRINGS	AISI 302
SEAL MATERIAL	NBR - FPM - EPDM

FEATURES

Maximum allowable pressure PS 80bar*
Maximum fluid viscosity 25cSt (mm ² /s)
Ambient temperature: from -10°C to +80°C according to the coil
Universal mounting position

ON REQUEST: Versions for use with fluid temperature at -40°C
Versions with 3/8" or 1/2" connections

CODE	CONNECTION G ISO 228	ORIFICE [mm]		KV m ³ /h	DIFFERENTIAL PRESSURE [bar]			NOMINAL POWER			COIL		SEAL ①	TEMP. RANGE [°C]
		1 → 2	2 → 3		MIN.	MAX.		AC	VA	DC	SERIES	WIDTH		
①	②				AC	DC	INRUSH	HOLDING	WATT					
NC Normally closed														
E310B...20///...	1/4"	2	2.4	0.11	0	13	13	20	15	10	2	30	NBR=B	-10 +90
E310B...25///...		2.5	2.4	0.16	0	10	10							
NO Normally open														
E310B...25/S/...	1/4"	2.4	2.5	0.16	0	9	9	20	15	10	2	30	EPDM=E	-10 +140
E310B...29/S/...		2.9	3	0.20	0	6.5	6.5							
U Universal														
E310B...25/G/...	1/4"	2.5	2.4	0.16	0	5	4	20	15	10	2	30	FPM=V	-10 +140

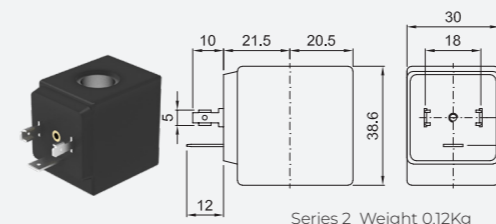
① Seal
② Coil E310BB24/S/201 NBR seal
③ The maximum allowable pressure PS for steam 2,5bar (gauge pressure)

Example: E310BV15///20B FPM seal Coil 24V 50/60Hz NC
Coil 24V DC NO

OPTIONS

- Silver shading ring
- UL certified coils

COILS ③	ALTERNATING CURRENT 50/60Hz (V)								DIRECT CURRENT (V)			ELECTRICAL CONNECTION	CONNECTORS				
	12	24	48	110	120	220 230	240	380	12	24	48						
Series 2 Width 30	20A	20B	U25B UL	20C	20D	U25D UL	20E	20F	U25F UL	20G	200	U250 UL	201	U251 UL	202	DIN 43650A	PG9 CODE 10349000



DESCRIPTION
Class F insulation
Voltage tolerance
AC +15% -10%
DC ± 10%
Protection class
IP65 with connector fitted
IP00 without connector
Continuous service ED100%

OPTIONS
Class H insulation
Cable attached
Special coil voltage
Special coil powers
UL certified coils
(for coil details see section 8)