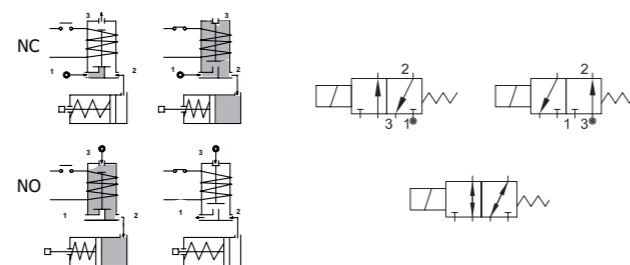
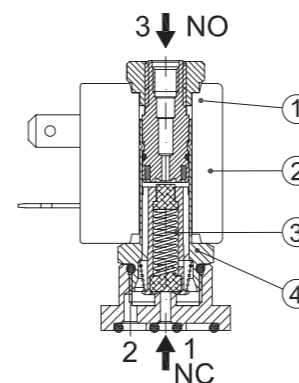


SERIES 312

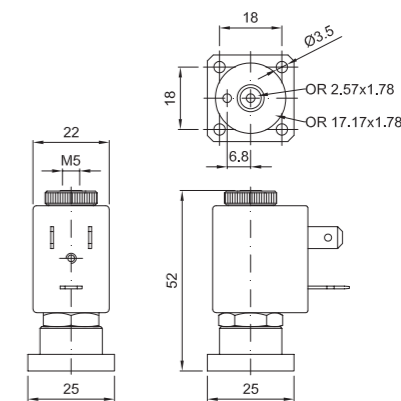
Solenoid valve 3 way direct acting poppet type
Flange fixing



SPARE PARTS LIST



OVERALL DIMENSION



CONSTRUCTION

BODY	Brass
ARMATURE TUBE	Brass
PLUNGER AND CORE	AISI 430FR
SPRINGS	AISI 302
SEAL MATERIAL	NBR - FPM - EPDM

FEATURES

Maximum allowable pressure PS 50bar ^③
Maximum fluid viscosity 25cSt (mm ² /s)
Ambient temperature: from -10°C to +80°C according to the coil
Universal mounting position

ON REQUEST: Versions for use with fluid temperature at -40°C

CODE ① ②	CONNECTION G ISO 228	ORIFICE [mm]		KV m ³ /h	DIFFERENTIAL PRESSURE [bar]		NOMINAL POWER			COIL		SEAL ①	TEMP. RANGE [°C]	
		1+2	2+3		MIN.	MAX.	AC	VA	DC	SERIES	WIDTH			
NC Normally closed														
E312X..12///...	□ 25	1.2	1.5	0.04	0	15	15	12	8	6.5	3	22	NBR=B	-10 +90
E312X..15///...		1.5	1.7	0.06	0	10	10							
NO Normally open														
E312X..15/S/...	□ 25	1.5	1.5	0.06	0	10	10	12	8	6.5	3	22	EPDM=E	-10 +140
U Universal														
E312X..10/G/...	□ 25	1	1	0.028	0	10	10	12	8	6.5	3	22	FPM=V	-10 +140

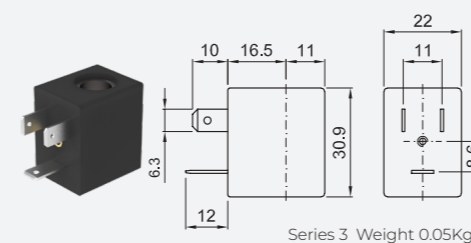
① Seal
② Coil E312XB15/S/301 NBR seal
③ The maximum allowable pressure PS for steam 2,5bar (gauge pressure)

Example: E312XV15///30B FPM seal Coil 24V 50/60Hz NC
Coil 24V DC NO

OPTIONS

Silver shading ring
Electroless nickel plating
Series 7 explosion proof coil according to ATEX - EExmII
Exhaust port with hosedtail connection
UL certified coils

COILS ②	ALTERNATING CURRENT 50/60Hz (V)								DIRECT CURRENT (V)			ELECTRICAL CONNECTION	CONNECTORS					
	12	24	48	110	120	220 230	240	380	12	24	48							
Series 3 Width 22	30A	30B	U35B UL	30C	30D	U35D UL	30E	V32E UL	30F	U35F UL	30G	300	U350 UL	301	U351 UL	302	DIN 46244	PG9 CODE 10348000



DESCRIPTION
Class F insulation
Voltage tolerance
AC +15% -10%
DC ± 10%
Protection class
IP65 with connector fitted
IP00 without connector
Continuous service ED100%

OPTIONS
Class H insulation
Cable attached
Special coil voltage
Special coil powers
UL certified coils
(for coil details see section 8)