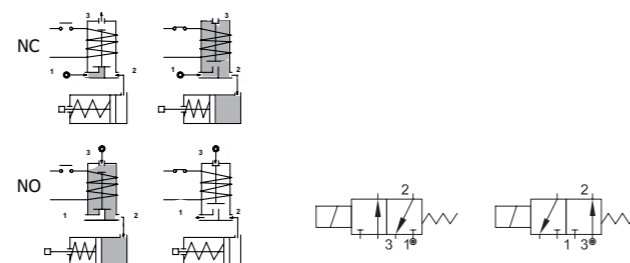
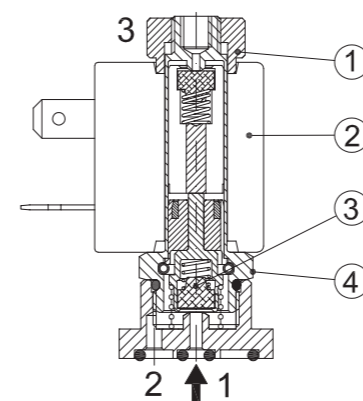


SERIES 313

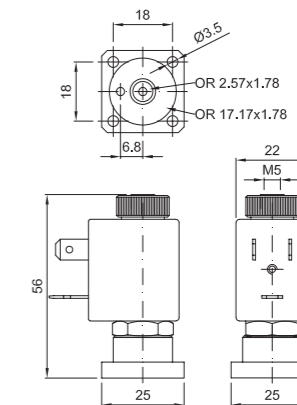
Solenoid valve 3 way normally open direct acting poppet type
Flange fixing



SPARE PARTS LIST



OVERALL DIMENSION



CONSTRUCTION

| | |
|-------------------------|------------------|
| BODY | Brass |
| ARMATURE TUBE | Brass |
| PLUNGER AND CORE | AISI 430FR |
| SPRINGS | AISI 302 |
| SEAL MATERIAL | NBR - FPM - EPDM |

FEATURES

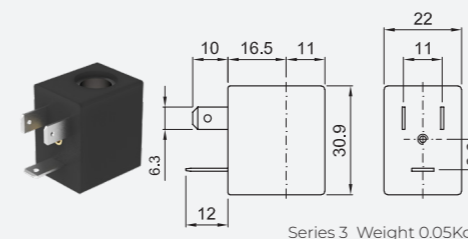
| |
|--|
| Maximum allowable pressure PS 50bar ^③ |
| Maximum fluid viscosity 25cSt (mm ² /s) |
| Ambient temperature: from -10°C to +80°C according to the coil |
| Universal mounting position |

| CODE ① ② | Ø FLANGE | ORIFICE [mm] | | KV m ³ /h | DIFFERENTIAL PRESSURE [bar] | | | NOMINAL POWER | | | COIL | | SEAL ① | TEMP. RANGE [°C] |
|------------------|----------|--------------|-------|-------------------------|-----------------------------|------|----|---------------|----|-----|--------|-------|--------------------------|---------------------------------|
| | | 1 → 2 | 2 → 3 | | MIN. | MAX. | | AC | VA | DC | SERIES | WIDTH | | |
| | | | | | | AC | DC | | | | | | | |
| E313X...12///... | 25 | 1.2 | 1.2 | 0.04 | 0 | 12 | 8 | 12 | 8 | 6.5 | 3 | 22 | NBR=B EPDM=E FPM=V | -10 +90 -10 +140 -10 +140 |
| E313X...15///... | | 1.5 | 1.2 | 0.06 | 0 | 9 | 6 | | | | | | | |

OPTIONS

| |
|--|
| Stainless steel armature tube |
| Electroless nickel plating |
| Series 7 explosion proof coil according to ATEX - EExmII |
| Exhaust port with hositail connection |
| certified coils |

| COILS ② | ALTERNATING CURRENT 50/60Hz (V) | | | | | | | | DIRECT CURRENT (V) | | | ELECTRICAL CONNECTION | CONNECTORS | | | | | |
|----------------------|---------------------------------|-----|----------|-----|-----|------------|-----|----------|--------------------|----------|-----|-----------------------|------------|-----|----------|-----|-----------|-------------------------|
| | 12 | 24 | 48 | 110 | 120 | 220 230 | 240 | 380 | 12 | 24 | 48 | | | | | | | |
| Series 3 Width 22 | 30A | 30B | U35B | 30C | 30D | U35D | 30E | V32E | 30F | U35F | 30G | 300 | U350 | 301 | U351 | 302 | DIN 46244 | PG9 CODE 10348000 |



DESCRIPTION
Class F insulation
Voltage tolerance
AC +15% -10%
DC ± 10%
Protection class
IP65 with connector fitted
IP00 without connector
Continuous service ED100%

OPTIONS
Class H insulation
Cable attached
Special coil voltage
Special coil powers
 certified coils
(for coil details see section 8)

① Seal Example: E313XV15///301 FPM seal
② Coil Coil 24V DC
③ The maximum allowable pressure PS for steam 2,5bar (gauge pressure)