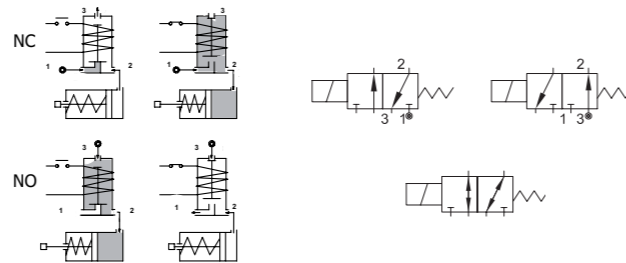
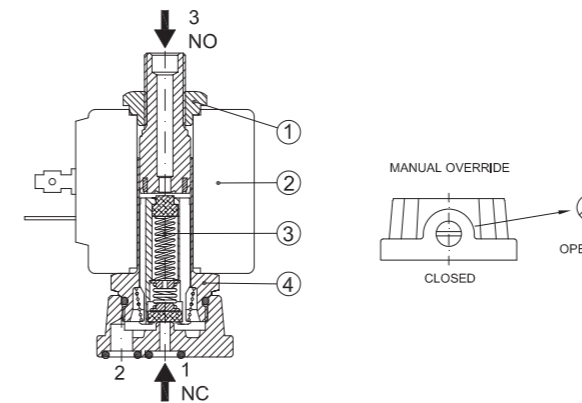


# SERIES 314

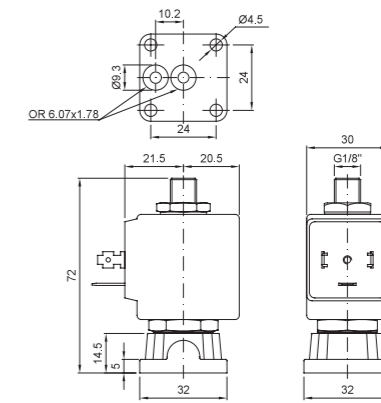
Solenoid valve 3 way direct acting poppet type  
Flange fixing



## SPARE PARTS LIST



## OVERALL DIMENSION



## CONSTRUCTION

<b>BODY</b>	Brass
<b>ARMATURE TUBE</b>	AISI 303
<b>PLUNGER AND CORE</b>	AISI 430FR
<b>SPRINGS</b>	AISI 302
<b>SEAL MATERIAL</b>	NBR - FPM - EPDM

## FEATURES

Maximum allowable pressure PS 80bar <sup>®</sup>
Maximum fluid viscosity 25cSt (mm <sup>2</sup> /s)
Ambient temperature: from -10°C to +80°C according to the coil
Universal mounting position

ON REQUEST: Versions for use with fluid temperature at -40°C

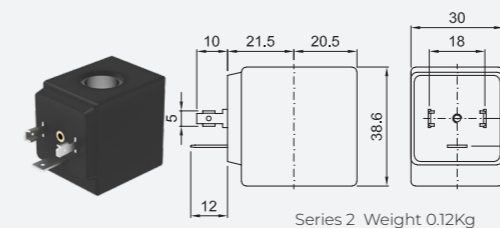
CODE ① ②	Ø FLANGE	ORIFICE [mm]		KV m <sup>3</sup> /h	DIFFERENTIAL PRESSURE [bar]		NOMINAL POWER			COIL		SEAL ③	TEMP. RANGE [°C]	
		1+2	2+3		MIN.	MAX.	AC	VA	DC	SERIES	WIDTH			
<b>NC Normally closed</b>														
E314X...15///...	Ø 32	1.5	2.4	0.07	0	20	20					NBR=B	-10 +90	
E314X...20///...		2	2.4	0.11	0	13	13	20	15	10	2			30
E314X...25///...		2.5	2.4	0.16	0	10	10							
<b>NO Normally open</b>														
E314X...24/S/...	Ø 32	2.4	2.5	0.16	0	9	9					EPDM=E	-10 +140	
E314X...29/S/...		2.9	3	0.20	0	6.5	6.5	20	15	10	2			30
<b>U Universal</b>														
E314X...25/C/...	Ø 32	2.5	2.4	0.16	0	5	4	20	15	10	2	30		

① Seal Example: E314XV15///20B FPM seal Coil 24V 50/60Hz NC  
 ② Coil E314XB24/S/201 NBR seal Coil 24V DC NO  
 ③ The maximum allowable pressure PS for steam 2,5bar (gauge pressure)

## OPTIONS

Manual override
Electroless nickel plating
Stainless steel seat
UL certified coils

COILS ③	ALTERNATING CURRENT 50/60Hz (V)								DIRECT CURRENT (V)			ELECTRICAL CONNECTION	CONNECTORS				
	12	24	48	110	120	220 230	240	380	12	24	48						
Series 2 Width 30	20A	20B	U25B UL	20C	20D	U25D UL	20E	20F	U25F UL	20G	200	U250 UL	201	U251 UL	202	DIN 43650A	PG9 CODE 10349000



**DESCRIPTION**  
 Class F insulation  
 Voltage tolerance  
 AC +15% -10%  
 DC ± 10%  
 Protection class  
 IP65 with connector fitted  
 IP00 without connector  
 Continuous service ED100%

**OPTIONS**  
 Class H insulation  
 Cable attached  
 Special coil voltage  
 Special coil powers  
 UL certified coils  
 (for coil details see section 8)