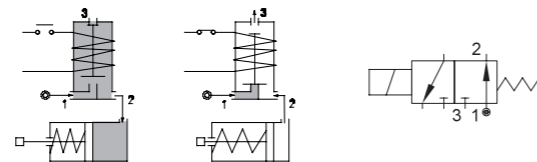
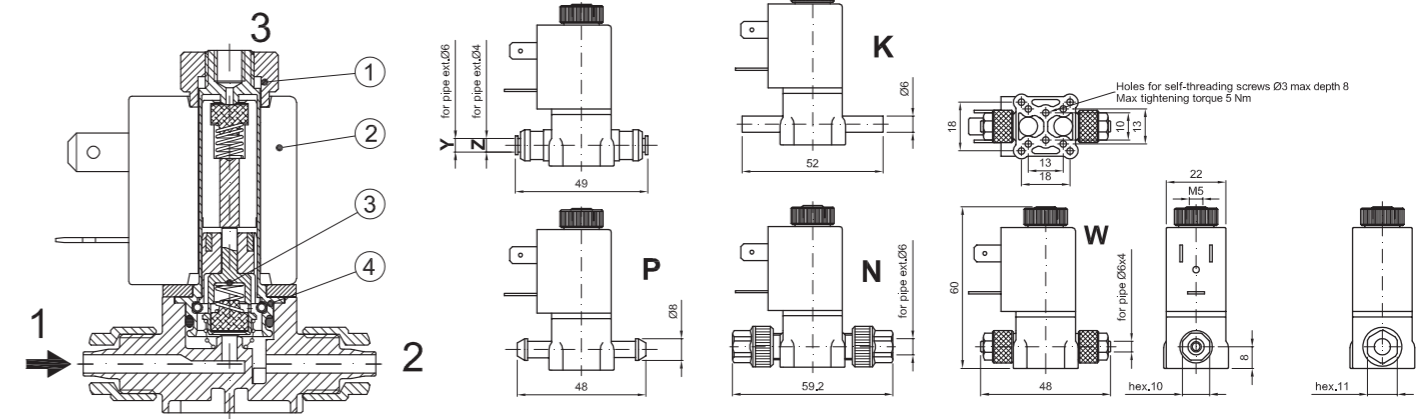


# SERIES 337

Solenoid valve 3 way normally open direct acting poppet type, suitable for food applications and all compatible fluids.



## SPARE PARTS LIST



## CONSTRUCTION

<b>BODY</b>	Thermoplastic polymer ACS, KTW, W270, WRAS, NSF, FDA certified
<b>ARMATURE TUBE</b>	Brass
<b>PLUNGER AND CORE</b>	Stainless steel
<b>SPRINGS</b>	Stainless steel
<b>SEAL MATERIAL</b>	NBR - FPM - EPDM

## FEATURES

Maximum allowable pressure PS 15bar <sup>②</sup>
Maximum fluid viscosity 25cSt (mm <sup>2</sup> /s)
Ambient temperature: from -10°C to +80°C according to the coil
Universal mounting position

## CONNECTION

K	N	P	W <sup>④</sup>	Y	Z
SPIGGOT	G1/8" male thread with NUT for flexible pipes	HOSETAIL for flexible pipes	COMPRESSION for flexible and semiflexible pipes	PUSH IN for semiflexible pipes Øext 6	PUSH IN for semiflexible pipes Øext 4

CODE	CONNECTION G ISO 228	ORIFICE [mm]	KV m <sup>3</sup> /h	DIFFERENTIAL PRESSURE [bar]			NOMINAL POWER			COIL		SEAL	TEMP. RANGE [°C]
				MIN.	MAX.	AC	VA	DC	SERIES	WIDTH			
											AC		
E337...15///...	K-N-P-W-Y-Z	1.5	0.06	0	9	6	12	8	6.5	3	22	NBR=B EPDM=E FPM=V	-10 +90 -10 +140 -10 +140

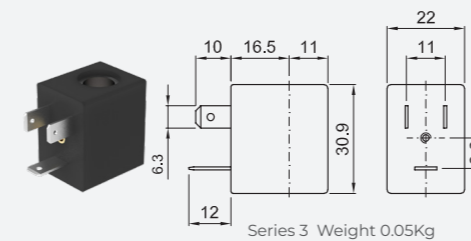
② Seal  
 ③ Coil  
 ④ Only for connection "W" E337W.../1/...  
 ⑤ The maximum allowable pressure PS for steam is 2.5bar (gauge pressure)  
 The maximum allowable pressure is related to the type of connection and pipe used

\*\* The temperature range is related to the material of the seals (NBR, EPDM, FPM), and the valves' body. Please contact us concerning the temperature range referred to the different types of connection.

## OPTIONS

Stainless steel armature tube
Chemically nickel-plated armature tube
Type N connection without nut
certified coils

COILS ②	ALTERNATING CURRENT 50/60Hz (V)						DIRECT CURRENT (V)				ELECTRICAL CONNECTION	CONNECTORS						
	12	24	48	110	120	220 230	240	380	12	24			48					
Series 3 Width 22	30A	30B	U35B	30C	30D	U35D	30E	V32E	30F	U35F	30G	300	U350	301	U351	302	DIN 46244	PG9 CODE 10348000



**DESCRIPTION**  
 Class F insulation  
 Voltage tolerance  
 AC +15% -10%  
 DC ± 10%  
 Protection class  
 IP65 with connector fitted  
 IP00 without connector  
 Continuous service ED100%

**OPTIONS**  
 Class H insulation  
 Cable attached  
 Special coil voltage  
 Special coil powers  
 certified coils  
 (for coil details see section 8)