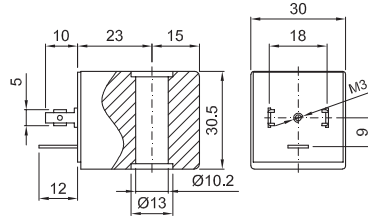


SERIES 4

Encapsulated coil incorporating the magnetic circuit.
Fixing by means of a central nut.
Electrical connection according to DIN 43650 A
(A EN 175301-803 ISO 4400)



CONSTRUCTION

| ENCAPSULATION | |
|-------------------------|--|
| Class F | Fibre-glass Nylon |
| Class H | Fibre-glass Polyarylamide |
| Magnetic circuit | Zinc-plated steel |
| Windings | Copper covered with class H insulation |
| AMBIENT TEMPERATURE | |
| Class F | -10°C +55°C |
| Class H | -10°C +80°C |
| UL coils | -10°C +60°C |

| OPTIONS | |
|-------------------------------------|--|
| Electrical connection through cable | |
| Special powers and voltages | |
| Self-extinguish | |

| CODE | | ALTERNATING CURRENT VOLTAGE | DIRECT CURRENT VOLTAGE (V) | POWER ① | | VOLTAGE TOLERANCE | | CONNECTOR | SERVICE ED | | |
|--------------------|--------------------|-----------------------------|----------------------------|--------------------------|--------------------|---------------------|----------------|-----------|------------|---|------|
| CLASS F INSULATION | CLASS H INSULATION | | | ALTERNATING CURRENT (VA) | DIRECT CURRENT (W) | ALTERNATING CURRENT | DIRECT CURRENT | | | | |
| 40A | 42A | 12V 50/60Hz | - | 11 | - | +15% | - | 10349000 | 100% | | |
| 40B | 42B | 24V 50/60Hz | - | | | | | | | | |
| 40C | 42C | 48V 50/60Hz | - | | | | | | | | |
| 40D | 42D | 110V 50/60Hz | - | | | - | 5 | | | - | ±10% |
| 40E | 42E | 220/230V 50/60Hz | - | | | | | | | | |
| 40F | 42F | 240V 50/60Hz | - | | | | | | | | |
| 40G | 42G | 380V 50/60Hz | - | | | | | | | | |
| 400 | 420 | - | 12 | - | - | - | ±10% | | | | |
| 401 | 421 | - | 24 | | | | | | | | |
| 402 | 422 | - | 48 | | | | | | | | |

Certified versions

NOTE: The performance with UL coil could be different. Please contact the manufacturer for any further information.

| | | | | | | | | | |
|---|------|---|----|---|---|---|------|----------|------|
| - | U450 | - | 12 | - | 8 | - | ±10% | 10349000 | 100% |
| - | U451 | - | 24 | - | - | - | - | - | - |

① Considering nominal voltage and an ambient temperature of 20°C