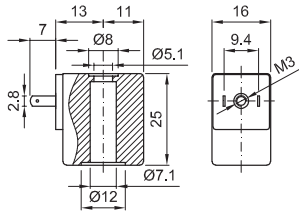


SERIES 6

Encapsulated coil incorporating the magnetic circuit.
Fixing by means of a central nut.
Electrical connection according to AMP 2.8x0.5.



CONSTRUCTION

ENCAPSULATION	
Class F	Fibre-glass Nylon
Magnetic circuit	Zinc-plated steel
Windings	Copper covered with class H insulation
OPTIONS	
	Electrical connection through cable
	Special powers and voltages
	Self-extinguish

CODE CLASS F INSULATION	DIRECT CURRENT VOLTAGE (V)	POWER ① DIRECT CURRENT (W)	VOLTAGE TOLERANCE	CONNECTOR	SERVICE ED
60014	12	4	±5%	10348040	100%
60048	12	8			25%
60114	24	4			100%
60148	24	8			25%
60012	12	2			100%
60112	24	2			100%

Certified versions 

NOTE: The performance with UL coil could be different. Please contact the manufacturer for any further information.

-	U450	-	12	-	8	-	±10%	10349000	100%
-	U451	-	24	-					

① Considering nominal voltage and an ambient temperature of 20°C