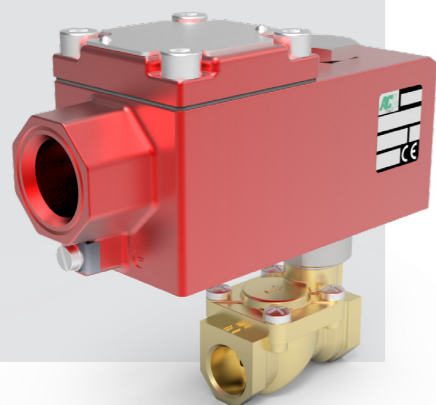
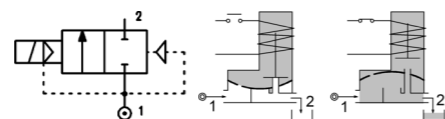
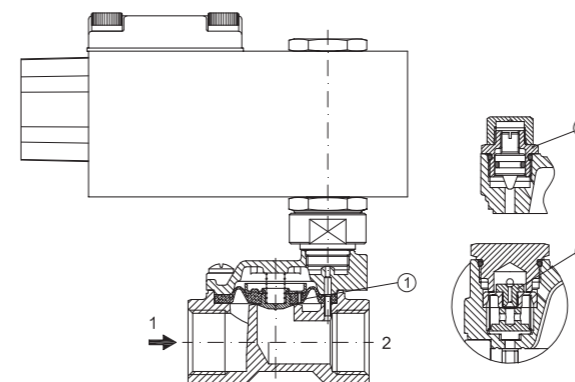


SERIES A107

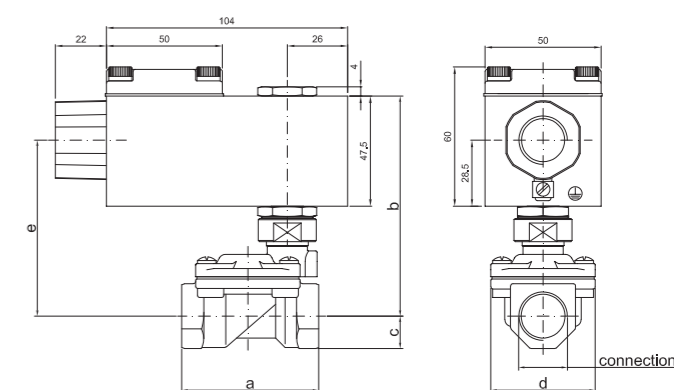
Solenoid valve 2 way normally closed with servo-assisted diaphragm.
 With explosion proof coil certified for hazardous area:
ATEX II 2GD Ex d IIC T6 or T5 or T4 Gb IP66
Ex tb IIIC T85°C or T100°C or T135°C Db IP66
CESI 03 ATEX 344/02
Tamb -40°C ÷ +35°C(T6) or +50°C(T5) or +60°C(T4)
 (other certifications e.g.. EAC, IN METRO, CCOE etc. on request)



SPARE PARTS LIST



OVERALL DIMENSION



VALVE CONSTRUCTION

BODY	Brass
SEAL MATERIAL	FPM - NBR

EXPLOSION PROOF COIL CONSTRUCTION

HOUSING	Red colour alloy (painted with epoxy powder)
ELECTRICAL CONNECTION	1/2" NPT (M20x1.5 on request)

FEATURES

Minimum differential pressure 0.15bar
Maximum allowable pressure PS 25bar [ⓐ]
Maximum fluid viscosity 25cSt (mm ² /s)
Ambient temperature: -40°C ÷ +35°C(T6), +50°C(T5), +60°C(T4)
Mounting position with vertical coil above

CODE ②	CONNECTION G ISO 228	ORIFICE [mm]	KV m ³ /h	DIFFERENTIAL PRESSURE [bar]			NOMINAL POWER		COIL SERIES	SEAL	TEMP. RANGE [°C]
				MIN.	MAX.		AC	DC			
					AC	DC					
A107BV10/1/...	1/4"	10	1.5	0.15	15	15	12 VA	8W	A6	NBR=B EPDM=E FPM=V	-10 +80
A107CV10/1/...	3/8"	10	1.7	0.15	15	15					
A107CV12/1/...	3/8"	12	2.2	0.15	15	15					
A107DV12/1/...	1/2"	12	2.5	0.15	15	15					
A107EV18/1/...	3/4"	18	5.5	0.15	13	13					
A107FV25/1/...	1"	25	10.2	0.15	10	10					
A107GV30/1/...	1 1/4"	30	15	0.15	10	10					
A107GV37/1/...	1 1/4"	37	18	0.15	10	10					
A107HV37/1/...	1 1/2"	37	21	0.15	10	10					
A107IV50/1/...	2"	50	36	0.15	10	10					
A107MB75/1/...	2 1/2"	75	75	0.3	5	5	NBR=B	-10 +80			
A107RB75/1/...	3"	75	84	0.3	5	5					

② Coil
 ③ G2 1/2 e G3" SOLENOID VALVES
 For applications with fluids listed in chapter 3 / group 1 of the PED Directive 2014/68 / EU (potentially hazardous or explosive fluids / mixtures) consider a PS value reduced to 15 bar max.

OPTIONS

Electroless nickel plating
Versions with slow closing diaphragm

COILS ②	ALTERNATING CURRENT 50/60 HZ (V)				DIRECT CURRENT (V)			ELECTRICAL CONNECTION
	24	48	110	220 230	12	24	48	
Series A6	A6B	A6C	A6D	A6E	A60	A61	A62	1/2" NPT

DESCRIPTION
 Voltage tolerance
 AC +15% -10%
 DC ± 10%
 Protection class IP66
 Continuous service ED100%