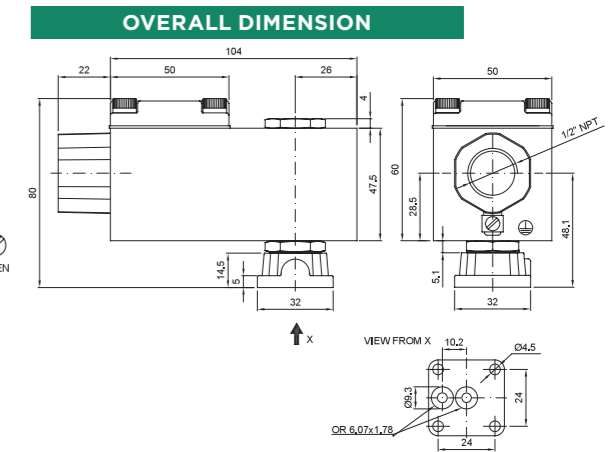
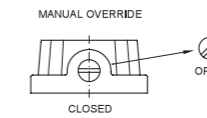
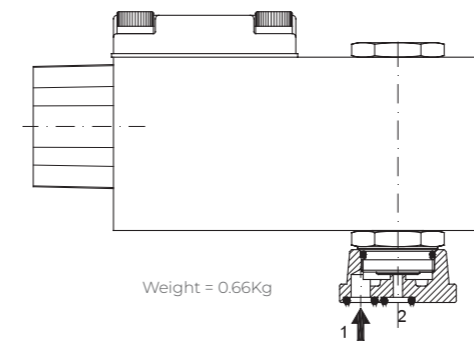
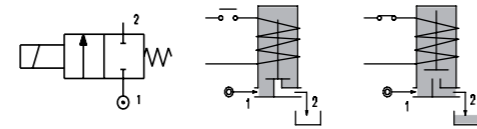


SERIES A114

Solenoid valve 2 way normally closed
direct acting poppet type - Flange fixing.
With explosion proof coil certified for hazardous area:
ATEX II 2GDEx d IIC T6 or T5 or T4 Gb IP66
Ex tb IIIC T85°C or T100°C or T135°C Db IP66
CESI 03 ATEX 344/02
Tamb -40°C ÷ +35°C(T6) or +50°C(T5) or +60°C(T4)
(other certifications e.g.EAC, INMETRO, CCOE etc. on request)



VALVE CONSTRUCTION

BODY	Brass
SEAL MATERIAL	NBR - FPM - EPDM

EXPLOSION PROOF COIL CONSTRUCTION

HOUSING	Red colour alloy (painted with epoxy powder)
ELECTRICAL CONNECTION	1/2" NPT (M20x1.5 on request)

FEATURES

Maximum allowable pressure PS 80bar
Maximum fluid viscosity 25cSt (mm ² /s)
Ambient temperature: -40°C ÷ +35°C(T6), +50°C(T5), +60°C(T4)
Mounting position with vertical coil above

OPTIONS
Manual override
Electroless nickel plating
Stainless steel seat insert

COILS ②	ALTERNATING CURRENT 50/60 HZ (V)				DIRECT CURRENT (V)			ELECTRICAL CONNECTION
	24	48	110	220 230	12	24	48	
Series A6	A6B	A6C	A6D	A6E	A60	A61	A62	1/2" NPT

DESCRIPTION
Voltage tolerance
AC +15% -10%
DC ± 10%
Protection class IP66
Continuous service ED100%

CODE ① ②	FLANGE □ 32	ORIFICE [mm]	KV m ³ /h	DIFFERENTIAL PRESSURE [bar]		NOMINAL POWER		COIL SERIES	SEAL	TEMP. RANGE [°C]
				MIN.	MAX.	AC	DC			
A114X...10///...		1	0.04	0	80	80				
A114X...12///...		1.2	0.05	0	60	60				
A114X...15///...		1.5	0.07	0	30	26				
A114X...20///...		2	0.1	0	22	20				
A114X...25///...	□ 32	2.5	0.15	0	16	14	12 VA	8W	A6	NBR=B EPDM=E FPM=V -10 +80
A114X...30///...		3	0.25	0	15	10				
A114X...35///...		3.5	0.32	0	10	8				
A114X...40///...		4	0.36	0	8	5				
A114X...45///...		4.5	0.41	0	6.5	3.5				

① Seal
② Coil