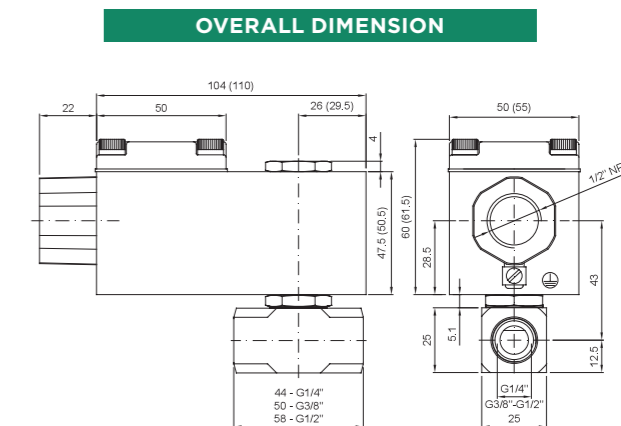
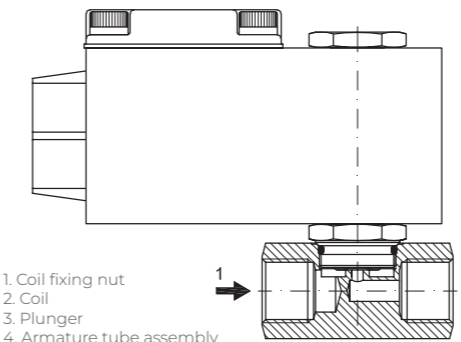
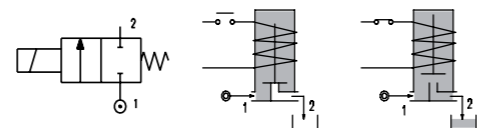


# SERIES A170

Solenoid valve 2 way normally closed in stainless steel AISI 316 direct acting poppet type.  
 With explosion proof coil certified for hazardous area:  
**ATEX II 2GDEx d IIC T6 or T5 or T4 Gb IP66**  
**Ex tb IIIC T85°C or T100°C or T135°C Db IP66**  
**CESI 03 ATEX 344/02**  
**Tamb -40°C ÷ +35°C(T6) or +50°C(T5) or +60°C(T4)**  
 (other certifications e.g.EAC, INMETRO, CCOE etc. on request)



## VALVE CONSTRUCTION

BODY	AISI 316
ARMATURE TUBE	AISI 316
PLUNGER AND CORE	AISI 430FR
SHADING RING	Silver
SPRINGS	AISI 316
SEAL MATERIAL	NBR - FPM - EPDM

## EXPLOSION PROOF COIL CONSTRUCTION

HOUSING	Red colour alloy (coil A6) Stainless steel (coil X6)
ELECTRICAL CONNECTION	1/2" NPT (M20x1 on request)

## FEATURES

Maximum allowable pressure PS 80bar
Maximum fluid viscosity 25cSt (mm <sup>2</sup> /s)
Ambient temperature: -40°C ÷ +35°C(T6), +50°C(T5), +60°C(T4)
Mounting position with vertical coil above

CODE ①②③	CONNECTION G ISO 228	ORIFICE [mm]	KV m <sup>3</sup> /h	DIFFERENTIAL PRESSURE [bar]		NOMINAL POWER		COIL SERIES	SEAL	TEMP. RANGE [°C]
				MIN.	MAX.	AC	DC			
A170...10///...	1/4" 3/8" 1/2"	1	0.04	0	80	80	12 VA 8W	A6 or X6	NBR=B EPDM=E FPM=V	-10 +80
A170...12///...		1.2	0.05	0	60	60				
A170...15///...		1.5	0.07	0	30	26				
A170...20///...		2	0.1	0	22	20				
A170...25///...		2.5	0.15	0	16	14				
A170...30///...		3	0.25	0	15	10				
A170...35///...		3.5	0.32	0	10	8				
A170...40///...		4	0.36	0	8	5				
A170...45///...		4.5	0.41	0	6.5	3.5				

COILS ②	ALTERNATING CURRENT 50/60 HZ (V)				DIRECT CURRENT (V)			ELECTRICAL CONNECTION
	24	48	110	220 230	12	24	48	
Series A6 alloy housing	A6B	A6C	A6D	A6E	A60	A61	A62	1/2" NPT
Series X6 s.steel housing	X6B	X6C	X6D	X6E	X60	X61	X62	

**DESCRIPTION**  
 Voltage tolerance  
 AC +15% -10%  
 DC ± 10%  
 Protection class IP66  
 Continuous service ED100%

- ① Connection: B=1/4", C=3/8", D=1/2"
- ② Seal
- ③ Coil

Example: A170BV12///A6B - connections G1/4", FPM seal, 24V AC, alloy housing  
 A170BV12///X6B - connections G1/4", FPM seal, 24V AC, stainless steel housing