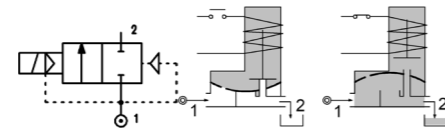
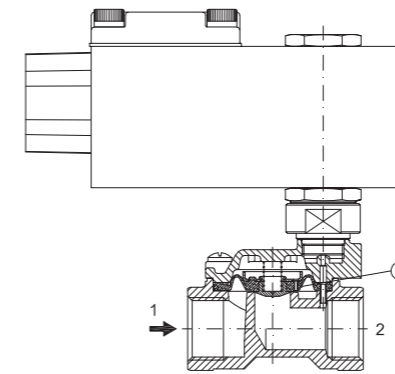


SERIES A177

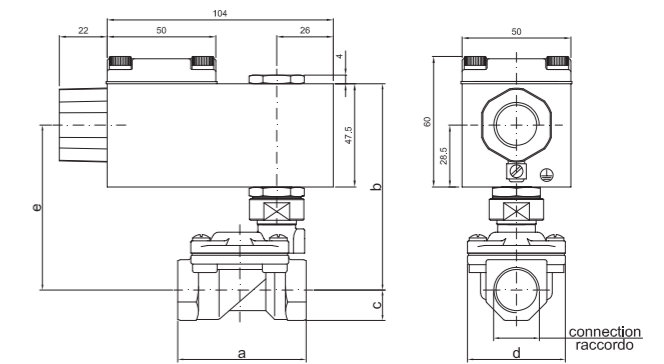
Solenoid valve 2 way normally closed in stainless steel AISI 316 with servo-assisted diaphragm.
With explosion proof coil certified for hazardous area:
ATEX II 2GD Ex d IIC T6 or T5 or T4 Gb IP66
Ex tb IIC T85°C or T100°C or T135°C Db IP66
CESI 03 ATEX 344/02
Tamb -40°C ÷ +35°C(T6) or +50°C(T5) or +60°C(T4)
(other certifications e.g.. EAC, INMETRO, CCOE etc. on request)



SPARE PARTS LIST



OVERALL DIMENSION



VALVE CONSTRUCTION

BODY	AISI 316
SEAL MATERIAL	FPM - NBR

EXPLOSION PROOF COIL CONSTRUCTION

HOUSING	Red colour alloy (painted with epoxy powder)
ELECTRICAL CONNECTION	1/2" NPT (M20x1.5 on request)

FEATURES

Minimum differential pressure	0.15bar
Maximum allowable pressure	PS 25bar
Maximum fluid viscosity	25cSt (mm2/s)
Ambient temperature:	-40°C ÷ +35°C(T6), +50°C(T5), +60°C(T4)
Mounting position	with vertical coil above

CODE ②	CONNECTION G ISO 228	ORIFICE [mm]	KV m3/h	DIFFERENTIAL PRESSURE [bar]			NOMINAL POWER		COIL SERIES	SEAL	TEMP. RANGE [°C]
				MIN.	MAX.		AC	DC			
					AC	DC					
A177CV12/1/...	3/8"	12	2.2	0.15	15	15	12 VA	8W	A6	NBR=B EPDM=E FPM=V	-10 +80
A177DV12/1/...	1/2"	12	2.5	0.15	15	15					
A177EV18/1/...	3/4"	18	5.5	0.15	13	13					
A177FV25/1/...	1"	25	10.2	0.15	10	10					

② Coil

COILS ②	ALTERNATING CURRENT 50/60 HZ (V)				DIRECT CURRENT (V)			ELECTRICAL CONNECTION
	24	48	110	220 230	12	24	48	
Series A6	A6B	A6C	A6D	A6E	A60	A61	A62	1/2" NPT

DESCRIPTION
Voltage tolerance
AC +15% -10%
DC ± 10%
Protection class IP66
Continuous service ED100%

CONNECTION	a	b	c	d	e	weight [kg]
G3/8" Ø12	59	95	14	45	76	1.12
G1/2" Ø12	59	95	14	45	76	1.14
G3/4"	79	101	18	54	82	1.37
G1"	96	110	20	72	91	1.77