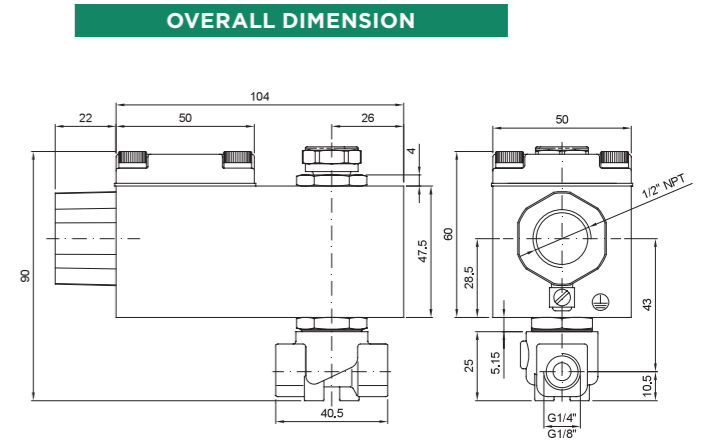
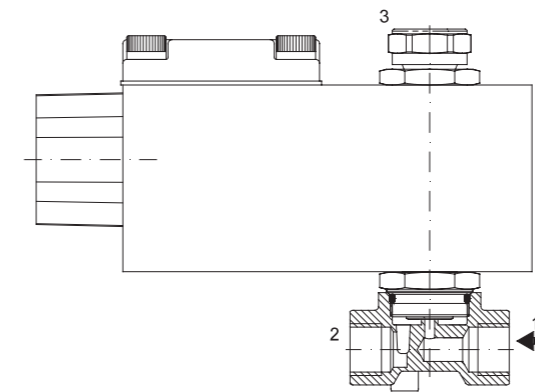
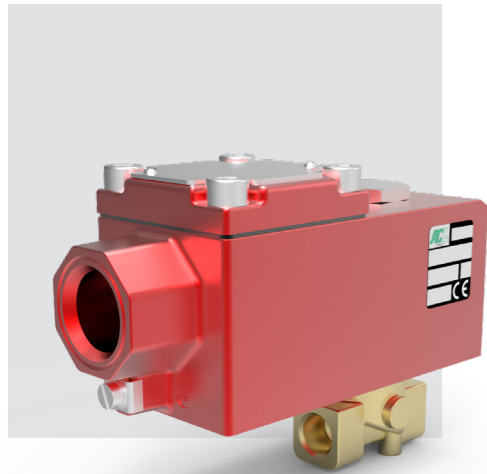


SERIES A306

Solenoid valve 3 way normally closed
direct acting poppet type.
With explosion proof coil certified for hazardous area:
ATEX II 2GDEx d IIC T6 o T5 o T4 Gb
Ex tb IIIC T80°C o T95°C o T130°C Db IP66
Tamb -40°C ÷ +35°C(T6) o +50°C(T5) o +60°C(T4)
(other certifications e.g.. EAC, INMETRO, CCOE etc. on request)



VALVE CONSTRUCTION

BODY	Brass
ARMATURE TUBE	AISI 303
PLUNGER AND CORE	AISI 430FR
SPRINGS	AISI 302
SEAL MATERIAL	FPM

EXPLOSION PROOF COIL CONSTRUCTION

HOUSING	Red colour alloy (coil A6) Stainless steel (coil X6)
ELECTRICAL CONNECTION	1/2" NPT (M20x1.5 on request)

FEATURES

Maximum allowable pressure PS 80bar *
Maximum fluid viscosity 25cSt (mm2/s)
Ambient temperature: -40°C ÷ +35°C(T6), +50°C(T5), +60°C(T4)
Mounting position with vertical coil above

CODE ①② ③	CONNECTION G ISO 228	ORIFICE [mm]		KV m3/h	DIFFERENTIAL PRESSURE [bar]		NOMINAL POWER		COIL SERIES	SEAL ①	TEMP. RANGE [°C]	
		1 + 2	2 + 3		MIN.	MAX.	AC	DC				
					AC	DC	HOLDING					
A306... ..15///...	1/8"	1.5	2.4	0.07	0	16	16					
A306... ..20///...	1/4"	2	2.4	0.11	0	13	13	12 VA	8W	A6	NBR=B EPDM=E FPM=V	-10 +80
A306... ..25///...		2.5	2.4	0.16	0	10	10					

① Connection: A=1/8", B=1/4"
② Seal
③ Coil
④ The maximum allowable pressure PS for steam is 2,5bar (gauge pressure)

Example: A306BV15///A6B FPM seal, connection G1/4", Ø1.5
Coil 24V 50/60Hz

COILS ③	ALTERNATING CURRENT 50/60 HZ (V)				DIRECT CURRENT (V)			ELECTRICAL CONNECTION
	24	48	110	220 230	12	24	48	
Series A6	A6B	A6C	A6D	A6E	A60	A61	A62	1/2" NPT

DESCRIPTION
Voltage tolerance
AC +15% -10%
DC ± 10%
Protection class IP66
Continuous service ED100%