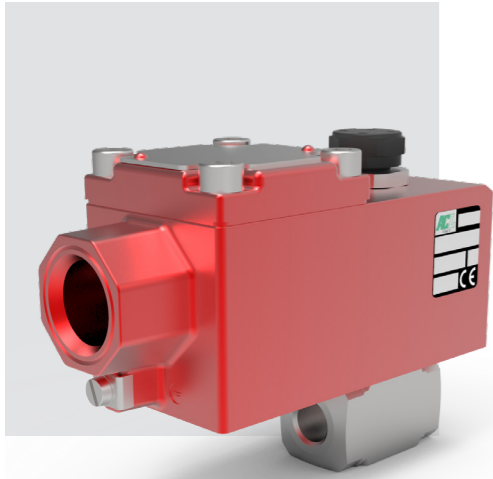
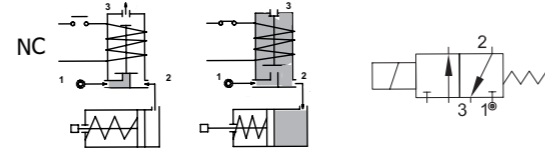
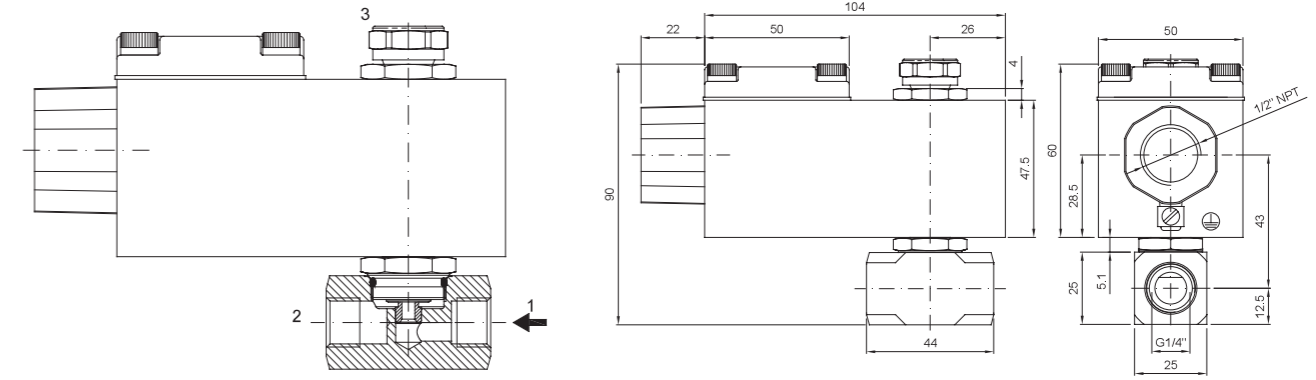


SERIES A370

Solenoid valve 3 way normally closed in stainless steel AISI 316 direct acting poppet type.
 With explosion proof coil certified for hazardous area:
ATEX II 2GDEx d IIC T6 o T5 o T4 Gb
Ex tb IIIC T80°C o T95°C o T130°C Db IP66
Tamb -40°C ÷ +35°C(T6) o +50°C(T5) o +60°C(T4)
 (other certifications e.g.. EAC, INMETRO, CCOE etc. on request)



OVERALL DIMENSION



VALVE CONSTRUCTION

BODY	AISI 316
ARMATURE TUBE	AISI 316
PLUNGER AND CORE	AISI 430FR
SPRINGS	AISI 316
SEAL MATERIAL	FPM

EXPLOSION PROOF COIL CONSTRUCTION

HOUSING	Red colour alloy (painted with epoxy powder)
ELECTRICAL CONNECTION	1/2" NPT (M20x1.5 on request)

FEATURES

Maximum allowable pressure PS 80bar [Ⓢ]
Maximum fluid viscosity 25cSt (mm ² /s)
Ambient temperature: -40°C ÷ +35°C(T6), +50°C(T5), +60°C(T4)
Mounting position with vertical coil above

COILS ②	ALTERNATING CURRENT 50/60 HZ (V)				DIRECT CURRENT (V)			ELECTRICAL CONNECTION
	24	48	110	220 230	12	24	48	
Series A6	A6B	A6C	A6D	A6E	A60	A61	A62	1/2" NPT

DESCRIPTION
 Voltage tolerance
 AC +15% -10%
 DC ± 10%
 Protection class IP66
 Continuous service ED100%

CODE ① ②	CONNECTION G ISO 228	ORIFICE [mm]		KV m ³ /h	DIFFERENTIAL PRESSURE [bar]		NOMINAL POWER		COIL SERIES	SEAL ①	TEMP. RANGE [°C]	
		1 → 2	2 → 3		MIN.	MAX.	AC	DC				
					AC	DC	HOLDING					
A370B...15///...		1.5	2.4	0.07	0	16	16					
A370B...20///...	1/4"	2	2.4	0.11	0	13	13	12 VA	8W	A6	NBR=B EPDM=E FPM=V	-10 +80
A370B...25///...		2.5	2.4	0.16	0	10	10					

① Seal
 ② Coil
 ③ REMARK
 The maximum allowable pressure PS for steam 2,5bar (gauge pressure)
 Example: A370BV15///A6B FPM seal Coil 24V 50/60Hz