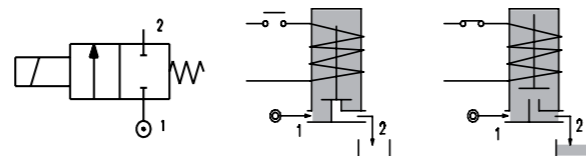
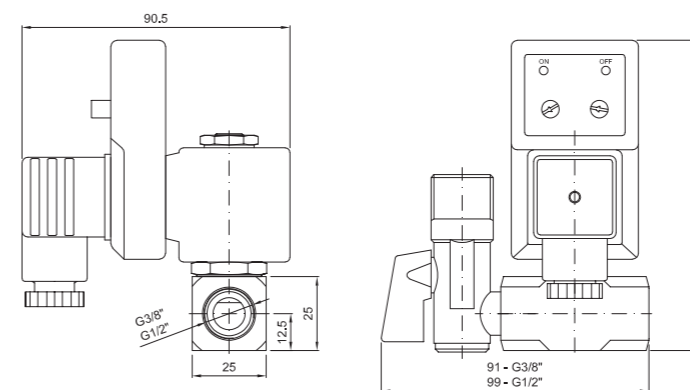


SERIES S106

Drain valve



OVERALL DIMENSION



Weight with coil series 2=0.36Kg
Weight with coil series 5=0.44Kg

VALVE CONSTRUCTION

Filter ball valve in chromium plated brass and stainless steel strainer, NBR seal
Connection : inlet G1/2", outlet G3/8" or G1/2"
Timer ACL mod.11303000
Connector DIN 43650A code 1034900A

FEATURES

Maximum allowable pressure PS 50bar
Maximum fluid viscosity 25cSt (mm2/s)
Ambient temperature: from -10°C to +80°C according to the coil
Protection class IP65

CODE ① ②	CONNECTION G ISO 228	ORIFICE [mm]	KV m3/h	DIFFERENTIAL PRESSURE [bar]		NOMINAL POWER			COIL		SEAL ①	TEMP. RANGE [°C]	
				MIN.	MAX.	AC INRUSH	VA HOLDING	DC WATT	SERIES	WIDTH			
													AC
S106BV30//...	1/4"	3	0.18	0	14	6	20	15	10	2	30	FPM=V	-10 +140
S106BV40//...		4	0.26	0	7	3							
S106C...30//...	3/8"	3	0.25	0	15	10	20	15	10	2	30	NBR=B	-10 +90
S106C...35//...		3.5	0.32	0	10	8							
S106C...40//...		4	0.36	0	8	5							
S106C...45//...		4.5	0.41	0	6.5	3.5							
S106D...30//...	1/2"	3	0.25	0	15	10	40	30	27	5	36	NBR=B	-10 +90
S106D...35//...		3.5	0.32	0	10	8							
S106D...40//...		4	0.36	0	8	5							
S106D...45//...		4.5	0.41	0	6.5	3.5							
S106C...30//...	3/8"	3	0.25	0	25	24	40	30	27	5	36	NBR=B	-10 +90
S106C...35//...		3.5	0.32	0	20	19							
S106C...40//...		4	0.36	0	16	15							
S106C...45//...		4.5	0.41	0	14	13							
S106D...30//...	1/2"	3	0.25	0	25	24	40	30	27	5	36	NBR=B	-10 +90
S106D...35//...		3.5	0.32	0	20	19							
S106D...40//...		4	0.36	0	16	15							
S106D...45//...		4.5	0.41	0	14	13							

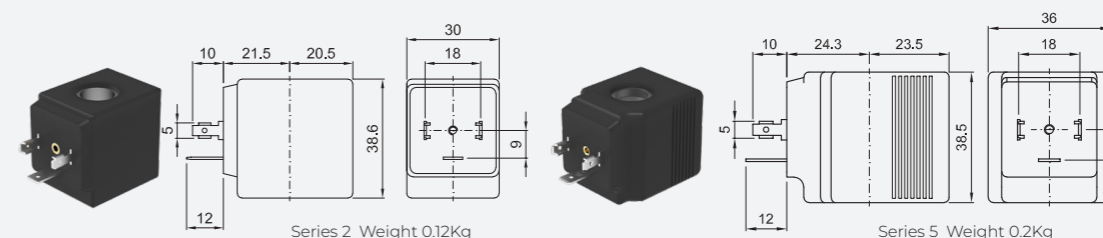
① Seal
② Coil

Example: S106CB30//20E NBR seal
Coil 230V 50/60Hz

OPTIONS

Electroless nickel plating on the valve body
Overmoulded DIN cable connector
UL certified coils

COILS ③	ALTERNATING CURRENT 50/60Hz (V)								DIRECT CURRENT (V)			ELECTRICAL CONNECTION	CONNECTORS				
	12	24	48	110	120	220 230	240	380	12	24	48						
Series 2 Width 30	20A	20B	U25B	20C	20D	U25D	20E	20F	U25F	20G	200	U250	201	U251	202	DIN 43650A	PG9 CODE 10349000
Series 5 Width 36	52A	52B	U55B	52C	52D	U55D	52E	52F	U55F	52G	520	U550	521	U551	522	DIN 43650A	PG9 CODE 10349001



DESCRIPTION

Insulation class
Series 2 =F Series 5=H
Voltage tolerance
AC +15% -10%
DC ± 10%
Protection class
IP65 with connector fitted
IP00 without connector

OPTIONS

Class H insulation (series 2)
Cable attached
Special coil voltage
Special coil powers
UL certified coils
(for coil details see section 8)