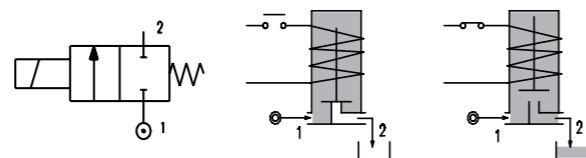
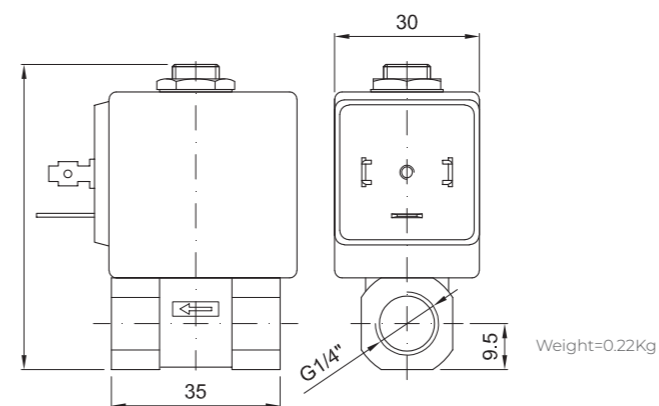


SERIES W106

Solenoid Valve 2-way Normally Closed direct acting poppet type.



OVERALL DIMENSION



Weight=0.22Kg



CONSTRUCTION

BODY	Brass
ARMATURE TUBE	Brass
PLUNGER AND CORE	EN 1.4106
SPRINGS	EN 1.4310
SEAL MATERIAL	FPM

FEATURES

Maximum allowable pressure PS 50bar
Maximum fluid viscosity 25 cSt (mm ² /s)
Ambient temperature: from -10°C to +80°C according to the coil
Universal mounting position

COILS ②	ALTERNATING CURRENT 50/60Hz (V)		DIRECT CURRENT (V)		ELECTRICAL CONNECTION	CONNECTORS
	110 - 120 V / 60Hz	220 - 230 V / 50 - 60 Hz	12 V	24 V		
Series 1597* Width 33 - 17 VA	-	15972	-	-	DIN 43650A	PG9 CODE 10349000
Series 1597* Width 33 22 VA - 16W	15973	-	15974	15975		

DESCRIPTION
 Class H insulation
 Voltage tolerance
 AC +6% -15%
 DC +10% -5%
 Protection class
 IP65 with connector fitted
 IP00 without connector
 Continuous service ED100%

OPTIONS
 Special coil voltage
 Special coil powers

CODE ②	CONNECTION G ISO 228	ORIFICE [mm]	KV m ³ /h	DIFFERENTIAL PRESSURE [bar]			NOMINAL POWER			COIL		SEAL	TEMP. RANGE [°C]
				MIN.	MAX.		AC INRUSH	VA HOLDING	DC WATT	SERIES	WIDTH		
					AC	DC							
W106BV30///...	1/4"	3	0.17	0	9	5	-	22	16	1597*	30	FPM=V	-10 +140
W106BV40///...		4	0.25	0	6	4	-	22	16	1597*	30	FPM=V	-10 +140

② Coil
 Series W106 can be provided only with coil mounted.
 Please refer to next page for coil codes.