

# GENERAL CATALOGUE

*Short version*



# ATEX

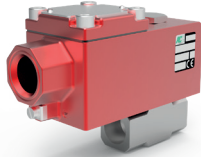
## SOLENOID VALVES

### NC & NO



#### SERIES A110 DIRECT ACTING

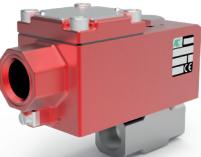
2/2 | NC



BODY MATERIAL <b>AISI 303</b>	SEAL <b>NBR - FPM - EPDM - PTFE</b>
CONNECTION <b>1/8" - 1/4" - 3/8" - 1/2"</b>	PRESSURE <b>0 - 80 BAR</b>

#### SERIES A170 DIRECT ACTING

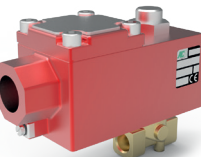
2/2 | NC



BODY MATERIAL <b>AISI 316</b>	SEAL <b>NBR - FPM - EPDM FFKM - PTFE</b>
CONNECTION <b>1/8" - 1/4" - 3/8" - 1/2"</b>	PRESSURE <b>0 - 80 BAR</b>

#### SERIES A206 DIRECT ACTING

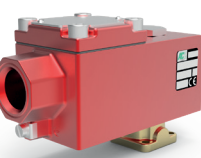
2/2 NO



BODY MATERIAL <b>BRASS</b>	SEAL <b>NBR - FPM - EPDM</b>
CONNECTION <b>1/8" - 1/4" - 3/8" - 1/2"</b>	PRESSURE <b>0 - 30 BAR</b>

#### SERIES A214 DIRECT ACTING

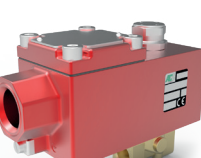
2/2 NO



BODY MATERIAL <b>BRASS</b>	SEAL <b>NBR - FPM - EPDM</b>
CONNECTION <b>FLANGED</b>	PRESSURE <b>0 - 30 BAR</b>

#### SERIES A306 DIRECT ACTING

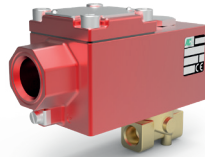
3/2 NC



BODY MATERIAL <b>BRASS</b>	SEAL <b>NBR - FPM - EPDM</b>
CONNECTION <b>1/8" - 1/4" - 3/8" - 1/2"</b>	PRESSURE <b>0 - 16 BAR</b>

#### SERIES A106 DIRECT ACTING

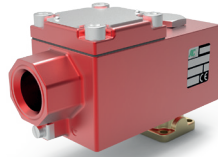
2/2 | NC



BODY MATERIAL <b>BRASS</b>	SEAL <b>NBR - FPM - EPDM - PTFE</b>
CONNECTION <b>1/8" - 1/4" - 3/8" - 1/2"</b>	PRESSURE <b>0 - 80 BAR</b>

#### SERIES A114 DIRECT ACTING

2/2 | NC



BODY MATERIAL <b>BRASS</b>	SEAL <b>NBR - FPM - EPDM - PTFE</b>
CONNECTION <b>FLANGED</b>	PRESSURE <b>0 - 80 BAR</b>

#### SERIES A177 SERVOASSISTED

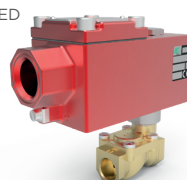
2/2 NC



BODY MATERIAL <b>AISI 316</b>	SEAL <b>NBR - FPM - EPDM</b>
CONNECTION <b>1/4" TO 1"</b>	PRESSURE <b>0,15 - 15 BAR</b>

#### SERIES A207 SERVOASSISTED

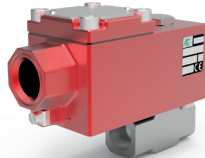
2/2 NO



BODY MATERIAL <b>BRASS</b>	SEAL <b>NBR - FPM - EPDM</b>
CONNECTION <b>1/4" TO 3"</b>	PRESSURE <b>0,15 - 15 BAR</b>

#### SERIES A270 DIRECT ACTING

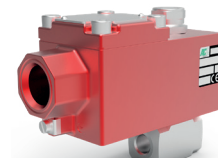
2/2 NO



BODY MATERIAL <b>AISI 316</b>	SEAL <b>NBR - FPM - EPDM - FFKM</b>
CONNECTION <b>1/8" - 1/4" - 3/8" - 1/2"</b>	PRESSURE <b>0 - 30 BAR</b>

#### SERIES A310 DIRECT ACTING

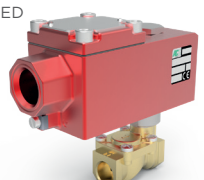
3/2 NC



BODY MATERIAL <b>AISI 303</b>	SEAL <b>NBR - FPM - EPDM</b>
CONNECTION <b>1/8" - 1/4" - 3/8" - 1/2"</b>	PRESSURE <b>0 - 16 BAR</b>

#### SERIES A107 SERVOASSISTED

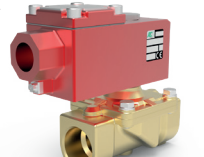
2/2 NC



BODY MATERIAL <b>BRASS</b>	SEAL <b>NBR - FPM - EPDM</b>
CONNECTION <b>1/4" TO 3"</b>	PRESSURE <b>0,15 - 15 BAR</b>

#### SERIES A168 ASSISTED LIFT DIAPHRAGM

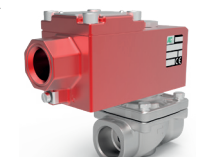
2/2 NC



BODY MATERIAL <b>BRASS</b>	SEAL <b>FPM</b>
CONNECTION <b>3/8" - 1/2" - 3/4" - 1"</b>	PRESSURE <b>0 - 5 BAR</b>

#### SERIES A178 ASSISTED LIFT DIAPHRAGM

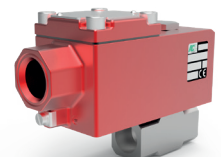
2/2 NC



BODY MATERIAL <b>AISI 316</b>	SEAL <b>FPM</b>
CONNECTION <b>3/8" - 1/2" - 3/4" - 1"</b>	PRESSURE <b>0 - 6 BAR</b>

#### SERIES A210 DIRECT ACTING

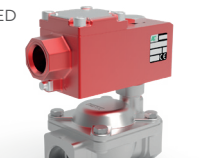
2/2 NO



BODY MATERIAL <b>AISI 303</b>	SEAL <b>NBR - FPM - EPDM</b>
CONNECTION <b>1/8" - 1/4" - 3/8" - 1/2"</b>	PRESSURE <b>0 - 30 BAR</b>

#### SERIES A277 SERVOASSISTED

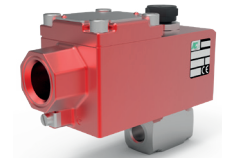
2/2 NO



BODY MATERIAL <b>AISI 316</b>	SEAL <b>NBR - FPM - EPDM</b>
CONNECTION <b>3/8" - 1/2" - 3/4" - 1"</b>	PRESSURE <b>0,15 - 15 BAR</b>

#### SERIES A370 DIRECT ACTING

3/2 NC



BODY MATERIAL <b>AISI 316</b>	SEAL <b>NBR - FPM - EPDM</b>
CONNECTION <b>1/8" - 1/4" - 3/8" - 1/2"</b>	PRESSURE <b>0 - 16 BAR</b>

# 2/2 DIRECT ACTING SOLENOID VALVES NC & NO

## SERIES W105

2/2 | NC



BODY MATERIAL <b>BRASS</b>	SEAL <b>FPM</b>
CONNECTION <b>1/8" GAS</b>	PRESSURE <b>0 - 14 BAR</b>

## SERIES 105

2/2 | NC



## SERIES 115

2/2  
BI-STABLE



BODY MATERIAL <b>BRASS</b>	SEAL <b>NBR - FPM - EPDM</b>	
CONNECTION <b>1/8"</b>	105 PRESS. <b>0 - 25 BAR</b>	115 PRESS. <b>0 - 20 BAR</b>

## SERIES W106

2/2 | NC



BODY MATERIAL <b>BRASS</b>	SEAL <b>FPM</b>
CONNECTION <b>1/4" GAS</b>	PRESSURE <b>0 - 9 BAR</b>

## SERIES 106

2/2 | NC



## SERIES 116

2/2  
BI-STABLE



BODY MATERIAL <b>BRASS</b>	SEAL <b>NBR - FPM - EPDM - PTFE</b>	
CONNECTION <b>1/8" - 1/4" - 3/8" - 1/2"</b>	106 PRESS. <b>0 - 100 BAR</b>	116 PRESS. <b>0 - 80 BAR</b>

## SERIES 109

2/2 | NC



BODY MATERIAL <b>BRASS</b>	SEAL <b>NBR - FPM - EPDM</b>	
CONNECTION <b>3/8" - 1/2" - 3/4"</b>	PRESSURE <b>0 - 0,8 BAR</b>	

## SERIES 110

2/2 | NC



BODY MATERIAL <b>AISI 303</b>	SEAL <b>NBR - FPM - EPDM - PTFE</b>
CONNECTION <b>1/8" - 1/4" - 3/8" - 1/2"</b>	PRESSURE <b>0 - 100 BAR</b>

## SERIES 111

2/2 | NC



BODY MATERIAL <b>AISI 303</b>	SEAL <b>NBR - FPM - EPDM</b>
CONNECTION <b>1/8"</b>	PRESSURE <b>0 - 25 BAR</b>

## SERIES 112

2/2 | NC



BODY MATERIAL <b>BRASS</b>	SEAL <b>NBR - FPM - EPDM</b>
CONNECTION <b>FLANGED</b>	PRESSURE <b>0 - 25 BAR</b>

## SERIES 114

2/2 | NC



BODY MATERIAL <b>BRASS</b>	SEAL <b>NBR - FPM - EPDM - PTFE</b>
CONNECTION <b>FLANGED</b>	PRESSURE <b>0 - 100 BAR</b>

## SERIES 121

2/2 | NC



BODY MATERIAL <b>BRASS</b>	SEAL <b>NBR - FPM - EPDM</b>
CONNECTION <b>M5</b>	PRESSURE <b>0 - 12 BAR</b>

## SERIES 130

2/2 NC



BODY MATERIAL <b>AISI 303</b>	SEAL <b>NBR - FPM - EPDM</b>
CONNECTION <b>(1/8" male &amp; push-on) (1/8" male &amp; 1/8" female) (1/8" female &amp; push-on) (1/8" female &amp; 1/8" female)</b>	PRESSURE <b>0 - 50 BAR</b>

## SERIES 230

2/2 | NO



BODY MATERIAL <b>AISI 303</b>	SEAL <b>NBR - FPM - EPDM</b>
CONNECTION <b>(1/8" male &amp; push-on) (1/8" male &amp; 1/8" female) (1/8" female &amp; push-on) (1/8" female &amp; 1/8" female)</b>	PRESSURE <b>0 - 10 BAR</b>

## SERIES 135

2/2 | NC



## SERIES B135

2/2  
BI-STABLE



BODY MATERIAL <b>POLYMER</b>	SEAL <b>NBR - FPM - EPDM</b>	
CONNECTION <b>HOSETAIL &amp; PUSH-IN FITTING</b>	135 PRESS. <b>0 - 25 BAR</b>	B135 PRESS. <b>0 - 16 BAR</b>

## SERIES S135

2/2 NC DRY



BODY MATERIAL <b>POLYMER</b>	SEAL <b>SILICONE - EPDM</b>
CONNECTION <b>HOSETAIL &amp; PUSH-IN FITTING</b>	PRESSURE <b>0 - 9 BAR</b>

## SERIES 150

2/2 NC DRY



BODY MATERIAL <b>ACETAL</b>	SEAL <b>SILICONE</b>
CONNECTION <b>1/4"</b>	PRESSURE <b>0 - 0,2 BAR</b>

## SERIES 151

2/2 NC DRY



BODY MATERIAL <b>ACETAL</b>	SEAL <b>SILICONE</b>
CONNECTION <b>HOSETAIL</b>	PRESSURE <b>0 - 0,6 BAR</b>

## SERIES 160

2/2 NC DRY



BODY MATERIAL <b>ACETAL</b>	SEAL <b>SILICONE - FPM</b>
CONNECTION <b>1/2"</b>	PRESSURE <b>0 - 0,5 BAR</b>

SERIES

**161**

2/2 | NC DRY



BODY MATERIAL  
**ACETAL**

SEAL  
**SILICONE - FPM**

CONNECTION  
**HOSETAIL**

PRESSURE  
**0 - 0,5 BAR**

SERIES

**170**

2/2 | NC



BODY MATERIAL  
**AISI 316**

SEAL **NBR - FPM - EPDM**  
**FFKM - PTFE**

CONNECTION  
**1/8" - 1/4" - 3/8" - 1/2"**

PRESSURE  
**0 - 100 BAR**

SERIES

**270**

2/2 NO



BODY MATERIAL  
**AISI 316**

SEAL  
**NBR - FPM - EPDM FFKM**

CONNECTION  
**1/8" - 1/4" - 3/8" - 1/2"**

PRESSURE  
**0 - 80 BAR**

SERIES

**171**

2/2 | NC



BODY MATERIAL  
**AISI 316**

SEAL  
**NBR - FPM - EPDM**

CONNECTION  
**1/8"**

PRESSURE  
**0 - 25 BAR**

SERIES

**203**

2/2 NO



BODY MATERIAL  
**BRASS**

SEAL  
**NBR - FPM - EPDM**

CONNECTION  
**1/8"**

PRESSURE  
**0 - 16 BAR**

SERIES

**204**

2/2 NO



BODY MATERIAL  
**BRASS**

SEAL  
**NBR - FPM - EPDM**

CONNECTION  
**1/8" & M5 or HOSETAIL**

PRESSURE  
**0 - 16 BAR**

SERIES

**205**

2/2 NO



BODY MATERIAL  
**BRASS**

SEAL  
**NBR - FPM - EPDM**

CONNECTION  
**1/8"**

PRESSURE  
**0 - 19 BAR**

SERIES

**206**

2/2 NO



BODY MATERIAL  
**BRASS**

SEAL  
**NBR - FPM - EPDM**

CONNECTION  
**1/8" - 1/4" - 3/8" - 1/2"**

PRESSURE  
**0 - 30 BAR**

SERIES

**210**

2/2 NO



BODY MATERIAL  
**AISI 303**

SEAL  
**NBR - FPM - EPDM**

CONNECTION  
**1/8" - 1/4" - 3/8" - 1/2"**

PRESSURE  
**0 - 80 BAR**

SERIES

**211**

2/2 NO



BODY MATERIAL  
**AISI 303**

SEAL  
**NBR - FPM - EPDM**

CONNECTION  
**1/8"**

PRESSURE  
**0 - 19 BAR**

SERIES

**212**

2/2 NO



BODY MATERIAL  
**BRASS**

SEAL  
**NBR - FPM - EPDM**

CONNECTION  
**FLANGED**

PRESSURE  
**0 - 19 BAR**

SERIES

**214**

2/2 NO



BODY MATERIAL  
**BRASS**

SEAL  
**NBR - FPM - EPDM**

CONNECTION  
**FLANGED**

PRESSURE  
**0 - 30 BAR**

SERIES

**235**

2/2 NO



BODY MATERIAL  
**POLYMER**

SEAL  
**NBR - FPM - EPDM**

CONNECTION  
**hosetail & push-in fitting**

PRESSURE  
**0 - 14 BAR**

SERIES

**271**

2/2 NO



BODY MATERIAL  
**AISI 316**

SEAL  
**NBR - FPM - EPDM**

CONNECTION  
**1/8"**

PRESSURE  
**0 - 19 BAR**

**3/2**  
**DIRECT**  
**ACTING**  
**SOLENOID VALVES**  
**NC & NO**

SERIES

**305**

3/2 NO - NC  
UNIVERSAL



BODY MATERIAL  
**BRASS**

SEAL  
**NBR - FPM - EPDM**

CONNECTION  
**1/8"**

PRESSURE  
**0 - 15 BAR**

SERIES

**306**

3/2 NO - NC  
UNIVERSAL



BODY MATERIAL  
**BRASS**

SEAL  
**NBR - FPM - EPDM**

CONNECTION  
**1/8" - 1/4" - 3/8" - 1/2"**

306 PRESS.  
**0 - 20 BAR**

SERIES

**307**

3/2 NO





BODY MATERIAL  
**BRASS**

SEAL  
**NBR - FPM - EPDM**

CONNECTION  
**1/8"**



PRESSURE  
**0 - 12 BAR**

**SERIES 310**  
3/2 NO - NC UNIVERSAL




BODY MATERIAL <b>AISI 303</b>	SEAL <b>NBR - FPM - EPDM</b>
CONNECTION <b>1/8" - 1/4" - 3/8" - 1/2"</b>	PRESSURE <b>0 - 13 BAR</b>

**SERIES 311**  
3/2 NO - NC UNIVERSAL



BODY MATERIAL <b>AISI 303</b>	SEAL <b>NBR - FPM - EPDM</b>
CONNECTION <b>1/8"</b>	PRESSURE <b>0 - 15 BAR</b>

**SERIES 312**   **SERIES 313**  
3/2 NO - NC UNIVERSAL   3/2 NO UNIVERSAL

BODY MATERIAL <b>BRASS</b>	SEAL <b>NBR - FPM - EPDM</b>	
CONNECTION <b>FLANGED</b>	312 PRESS. <b>0 - 15 BAR</b>	313 PRESS. <b>0 - 12 BAR</b>

**SERIES 314**  
3/2 NO - NC UNIVERSAL


BODY MATERIAL <b>BRASS</b>	SEAL <b>NBR - FPM - EPDM</b>
CONNECTION <b>FLANGED</b>	PRESSURE <b>0 - 20 BAR</b>

**SERIES 320**  
3/2 NO - NC UNIVERSAL







BODY MATERIAL <b>ALUMINIUM - AISI 303</b>	SEAL <b>FPM</b>
CONNECTION <b>1/4"</b>	PRESSURE <b>0 - 9 BAR</b>

**SERIES 330**  
3/2 NO - NC UNIVERSAL







BODY MATERIAL <b>POLYMER</b>	SEAL <b>NBR</b>
CONNECTION <b>HOSETAIL</b>	PRESSURE <b>0 - 0,4 BAR</b>

**SERIES 335**   **SERIES 337**  
3/2 NC   3/2 NO



BODY MATERIAL <b>POLYMER</b>	SEAL <b>NBR - FPM - EPDM</b>
CONNECTION <b>hosetail &amp; push-in fitting</b>	370 PRESS. <b>0 - 9 BAR</b>

**SERIES 340**   **SERIES 345**  
3/2 NO - NC UNIVERSAL



BODY MATERIAL <b>POLYMER</b>	SEAL <b>NBR</b>
CONNECTION <b>FLANGED</b>	PRESSURE <b>0 - 10 BAR</b>

**SERIES 370**  
3/2 NO - NC UNIVERSAL


BODY MATERIAL <b>AISI 316</b>	SEAL <b>NBR - FPM - EPDM - FFKM</b>
CONNECTION <b>1/8" - 1/4" - 3/8" - 1/2"</b>	PRESSURE <b>0 - 16 BAR</b>

**SERIES 371**  
3/2 NO - NC UNIVERSAL

BODY MATERIAL <b>AISI 316</b>	SEAL <b>NBR - FPM - EPDM</b>
CONNECTION <b>1/8"</b>	PRESSURE <b>0 - 15 BAR</b>


**SERIES 700**  
PINCH VALVE





BODY MATERIAL <b>ALUMINIUM</b>	SEAL <b>NOT SUPPLIED</b>
CONNECTION <b>Ø3</b>	PRESSURE <b>250 GR</b>

**2/2**  
**SERVOASSISTED**  
SOLENOID VALVES  
NC & NO



**SERIES 107**   **SERIES 117**  
2/2 NC   2/2 BI-STABLE







BODY MATERIAL <b>BRASS</b>	SEAL <b>FPM - NBR - EPDM</b>	
CONNECTION <b>1/4" TO 3"</b>	107 PRESS. <b>0,15 - 25 BAR</b>	117 PRESS. <b>0,15 - 15 BAR</b>

**SERIES 108**   ASSISTED LIFT DIAPHRAGM  
2/2 NC

BODY MATERIAL <b>BRASS</b>	SEAL <b>FPM</b>
CONNECTION <b>3/8" - 1/2" - 3/4" - 1"</b>	PRESSURE <b>0 - 12 BAR</b>

**SERIES 119**  
2/2 NC



BODY MATERIAL <b>BRASS</b>	SEAL <b>FPM &amp; PTFE</b>
CONNECTION <b>1/4" - 3/8" - 1/2"</b>	PRESSURE <b>1 - 50 BAR</b>

**SERIES 119W**  
2/2 NC






BODY MATERIAL <b>BRASS</b>	SEAL <b>PTFE</b>
CONNECTION <b>3/8" - 1/2"</b>	PRESSURE <b>2,5 - 10 BAR</b>

**SERIES 123**  
2/2 NC

BODY MATERIAL <b>BRASS</b>	SEAL <b>PTFE</b>
CONNECTION <b>3/8"</b>	PRESSURE <b>0,7 - 150 BAR</b>

**SERIES 124**  
2/2 NC

BODY MATERIAL <b>BRASS</b>	SEAL <b>PTFE</b>
CONNECTION <b>1/2"</b>	PRESSURE <b>3 - 100 BAR</b>

SERIES  
**168**

ASSISTED LIFT  
DIAPHRAGM

2/2 NC



BODY MATERIAL  
**BRASS**

SEAL  
**FPM**

CONNECTION  
**3/8" TO 1 1/2"**

PRESSURE  
**0 - 16 BAR**

SERIES  
**177**

2/2 NC



BODY MATERIAL  
**AISI 316**

SEAL  
**NBR - FPM - EPDM**

CONNECTION  
**1/4" TO 1"**

PRESSURE  
**0,15 - 15 BAR**

SERIES  
**277**

2/2 NC



BODY MATERIAL  
**AISI 316**

SEAL  
**NBR - FPM - EPDM**

CONNECTION  
**1/4" TO 1"**

PRESSURE  
**0,15 - 15 BAR**

SERIES  
**178**

ASSISTED LIFT  
DIAPHRAGM

2/2 NC



BODY MATERIAL  
**AISI 316**

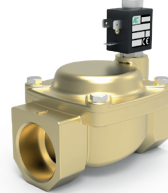
SEAL  
**FPM**

CONNECTION  
**3/8" TO 1 1/2"**

PRESSURE  
**0 - 14 BAR**

SERIES  
**207**

2/2 NO



BODY MATERIAL  
**BRASS**

SEAL  
**NBR - FPM - EPDM**

CONNECTION  
**1/4" TO 3"**

PRESSURE  
**0,15 - 15 BAR**

SERIES  
**219**

2/2 NO



BODY MATERIAL  
**BRASS**

SEAL  
**FPM & PTFE**

CONNECTION  
**3/8" - 1/2"**

PRESSURE  
**1 - 25 BAR**

## 2/2 PNEUMATIC SOLENOID VALVES

SERIES  
**P150**

2/2 NC  
PNEUMATIC



SERIES  
**P152**

2/2 NC PRO-  
PORTIONAL



BODY MATERIAL  
**AISI 316**

SEAL  
**PTFE**

CONNECTION  
**1/2" - 3/4" - 1"**

P150 PRESS.  
**0 - 25 BAR**

P152 PRESS.  
**0 - 16 BAR**

SERIES  
**P171**

2/2 NC  
PNEUMATIC



SERIES  
**P172**

2/2 NC PRO-  
PORTIONAL



BODY MATERIAL  
**AISI 316**

SEAL  
**PTFE**

CONNECTION  
**1/2" - 3/4" - 1" - 1 1/4" - 1 1/2" - 2"**

P171 PRESS.  
**0 - 35 BAR**

P172 PRESS.  
**0 - 16 BAR**

SERIES  
**P270**

2/2 NO  
PNEUMATIC



BODY MATERIAL  
**AISI 316**

SEAL  
**PTFE**

CONNECTION  
**1/2" - 3/4" - 1" - 1 1/4" - 1 1/2" - 2"**

PRESSURE  
**0 - 25 BAR**

SERIES  
**P370**

2/2 DOUBLE  
EFFECT



BODY MATERIAL  
**AISI 316**

SEAL  
**PTFE**

CONNECTION  
**1/2" - 3/4" - 1" - 1 1/4" - 1 1/2" - 2"**

PRESS.  
**0 - 25 BAR**

SERIES  
**PE100**

2/2 NC  
PNEUMATIC



BODY MATERIAL  
**AISI 316**

SEAL  
**PTFE**

CONNECTION  
**3/8" TO 3"**

PRESSURE  
**0 - 16 BAR**

SERIES  
**PF100**

2/2 NC  
PNEUMATIC



BODY MATERIAL  
**AISI 316**

SEAL  
**PTFE**

CONNECTION  
**FLANGED**

PRESSURE  
**0 - 16 BAR**

SERIES  
**PM100**

2/2 DOUBLE  
EFFECT



BODY MATERIAL  
**AISI 316**

SEAL  
**PTFE**

CONNECTION  
**THREADED**

PRESSURE  
**0 - 14 BAR**

SERIES  
**PS100**

2/2 NC  
PNEUMATIC



BODY MATERIAL  
**AISI 316**

SEAL  
**PTFE**

CONNECTION  
**WELDED**

PRESSURE  
**0 - 16 BAR**

SERIES  
**PT100**

2/2 NC  
PNEUMATIC



BODY MATERIAL  
**AISI 316**

SEAL  
**PTFE**

CONNECTION  
**TRI-CLAMP**

PRESSURE  
**0 - 14 BAR**

# COILS & CONNECTORS

SERIES  
**4**



SIZE <b>30</b>	POWER STD <b>11VA - 5W</b>	POWER UL <b>8W</b>
ARMATURE TUBE <b>10</b>		<b>CALUS</b>

SERIES  
**7**



SIZE <b>30</b>	POWER STD <b>5,2W - 5,3W - 5,4W</b>
ARMATURE TUBE <b>10</b>	

CONNECTOR  
**AMP**



COIL SIZE <b>16</b>	COIL SERIES <b>6</b>
------------------------	-------------------------

SERIES  
**2**



SIZE <b>30</b>	POWER STD <b>15VA - 10W</b>	POWER UL <b>15VA - 10W</b>
ARMATURE TUBE <b>13</b>		<b>CALUS</b>

SERIES  
**5**



SIZE <b>36</b>	POWER STD <b>30VA - 27W</b>	POWER UL <b>20VA - 14W</b>
ARMATURE TUBE <b>10</b>		<b>CALUS</b>

CONNECTOR  
**FORM A**



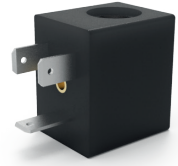
COIL SIZE <b>30 - 36</b>	COIL SERIES <b>2 - 4 - 5</b>
-----------------------------	---------------------------------

CONNECTOR  
**FORM C**



COIL SIZE <b>15</b>	COIL SERIES <b>15mm</b>
------------------------	----------------------------

SERIES  
**3**



SIZE <b>22</b>	POWER STD <b>8VA - 6,5W</b>	POWER UL <b>8VA - 6,5W</b>
ARMATURE TUBE <b>10</b>		<b>CALUS</b>

SERIES  
**6**



SIZE <b>16</b>	POWER STD <b>4W - 8W</b>
ARMATURE TUBE <b>7</b>	

CONNECTOR  
**FORM B**



COIL SIZE <b>22</b>	COIL SERIES <b>3</b>
------------------------	-------------------------

CONNECTOR  
**ENERGY SAVING**



COIL SIZE <b>30 - 36</b>	COIL SERIES <b>2 - 4 - 5</b>
-----------------------------	---------------------------------

# ACCESSORIES

SERIES  
**FY00**



DESCRIPTION <b>Y-TYPE STRAINER</b>	MATERIAL <b>AISI 304</b>
---------------------------------------	-----------------------------

SERIES  
**K1501**



DESCRIPTION <b>FILTER WITH VALVE</b>	MATERIAL <b>POLYMER</b>
---	----------------------------

SERIES  
**11303**

OUT=  
DIN 43650 A



DESCRIPTION <b>REPEAT CYCLE TIMER</b>	ON: 0,5 - 10 S	COIL SERIES <b>2 - 4 - 5</b>
	OFF: 0,5 - 45 MIN	

SERIES  
**K1537**



DESCRIPTION <b>FILTER WITHOUT VALVE</b>	MATERIAL <b>POLYMER</b>
--	----------------------------

SERIES  
**11304**

OUT=  
DIN 46244



DESCRIPTION <b>REPEAT CYCLE TIMER</b>	ON: 0,5 - 10 S	COIL SERIES <b>3</b>
	OFF: 0,5 - 45 MIN	

# GENERAL INFORMATION

**ACL** offers a complete portfolio of solenoid valve products and accessories for general purpose as well as a broad line of specialty valves.

Our valves are suitable for use with air, water, steam, and all fluids compatible with brass, stainless steel, plastic materials and various types of plating.

**ACL** solenoid valves are available in many configurations and functions such as 2 and 3 way, normally closed and normally open, direct acting or servo-assisted, and general service with connection sizes in BSP and inch from M5 to 3". Operating pressures range from vacuum to over 150 bar / 2.175 psi.



Our focus is on Quality, Delivery, Pricing and Product Customization all supported by a lean manufacturing system that produces certified products to our served markets.

This focus creates a competitive advantage.

## CONTACT INFORMATION

**ACL S.r.l.**  
Via G. Falcone, 6  
20873 | Cavenago di Brianza  
(MB) - Italy

Tel: +39 02.95.01335  
info.acl@cemegroup.com

acl.it - acsolenoidvalve.com  
cemegroup.com