



# Solenoid valve 3/2 way N.C. Direct acting - NSF Certified

31AP5A1V15-T0

÷

31AP5A1V30-T0

## PRESENTATION:

Direct acting S.V. for interception of fluids compatible with the construction materials.

Minimum operational pressure is not required.

The materials used and the tests carried out ensure maximum reliability and duration.

USE: Vending

PIPES: Push-in Ø 4

COIL:  
8W - Ø 13  
BDA - BSA 155°C (class F)  
BDV 180°C (class H)

**COIL HOUSING AND COIL FORMER MATERIAL ARE  
MADE BY 100% VIRGIN MATERIAL.**

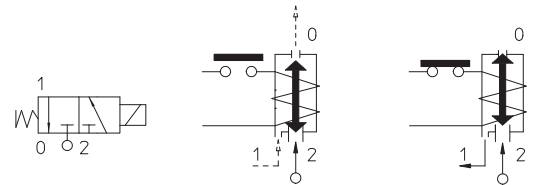
Ambient temperature:

See coils catalogue page for its compatibility.



| Gaskets  | Temperature |         | Medium            |
|--|-------------|---------|-------------------|
| V+E=FKM+EPDM<br>(fluoroelastomer + ethylene-propylene) | - 10°C      | + 140°C | Water, air, steam |

Verify tubes for pressure characteristics and operating temperatures.



Max allowable pressure (PS) 16 bar - According to EN 60730-2-8 - Factor of safety for domestic applications equal to 5 times PS

| Pipe     | Code          | Max viscosity |     | Ø<br>mm | Kv<br>l/mn | Power<br>watt | Pressure   |         |    |
|----------|---------------|---------------|-----|---------|------------|---------------|------------|---------|----|
|          |               | cSt           | °E  |         |            |               | min<br>bar | M.O.P.D |    |
| P.I. Ø 4 | 31AP5A1V15-T0 | 12            | ~ 2 | 1,5*    | 1,1        | 8             | 0          | 15      | 15 |
|          | 31AP5A1V20-T0 | 37            | ~ 5 | 2*      | 1,8        |               |            | 10      | 10 |
|          | 31AP5A1V25-T0 | 53            | ~ 7 | 2,5*    | 2,5        |               |            | 6       | 6  |
|          | 31AP5A1V30-T0 |               |     | 3*      | 3,4        |               |            | 5       | 5  |

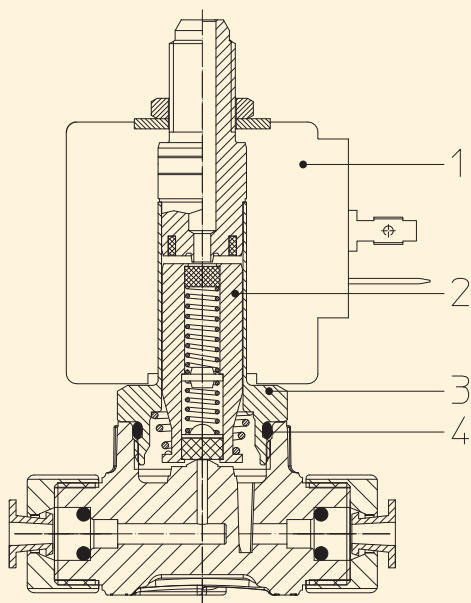
**Max allowable pressure (PS) 25 bar** - Safety factor for industrial application equal to 3 times PS | Please consult our Technical Service.



## Note

\* 3rd way exhaust= Ø 2,5 mm | Coil nut assembly 2 Nm max; armature tube 4 Nm | For tubes: PA and PTFE tolerance max (±0,1) | Available on request the Push-in locking clip, see catalogue page R992404/ | Available with coil Ex nA | The use of rigid sealings (Ruby or PTFE) usually implies a slight leakage, limited within 2scc/min at the pressure of 1 bar | For application with steam or with PS above the 16 bar, please consult our Technical Service | Available on request and with minimum quantities.

The "ODE" reserves the right to carry out technical and aesthetic modifications without prior notice.



#### MATERIALS:

|                                |                                 |
|--------------------------------|---------------------------------|
| <b>Body</b>                    | PPS                             |
| <b>Armature tube</b>           | Stainless steel AISI series 300 |
| <b>Fixed core</b>              | Stainless steel AISI series 400 |
| <b>Plunger</b>                 | Stainless steel AISI series 400 |
| <b>Phase displacement ring</b> | Gold plated copper              |
| <b>Spring</b>                  | Stainless steel AISI series 300 |
| <b>Seal</b>                    | V=FKM                           |
| <b>Orifice</b>                 | PPS                             |
| <b>OR Pipe</b>                 | EPDM                            |

#### On request:

|                             |               |
|-----------------------------|---------------|
| <b>Connector</b>            | Pg 9 or Pg 11 |
| <b>Connector conformity</b> | ISO 4400      |

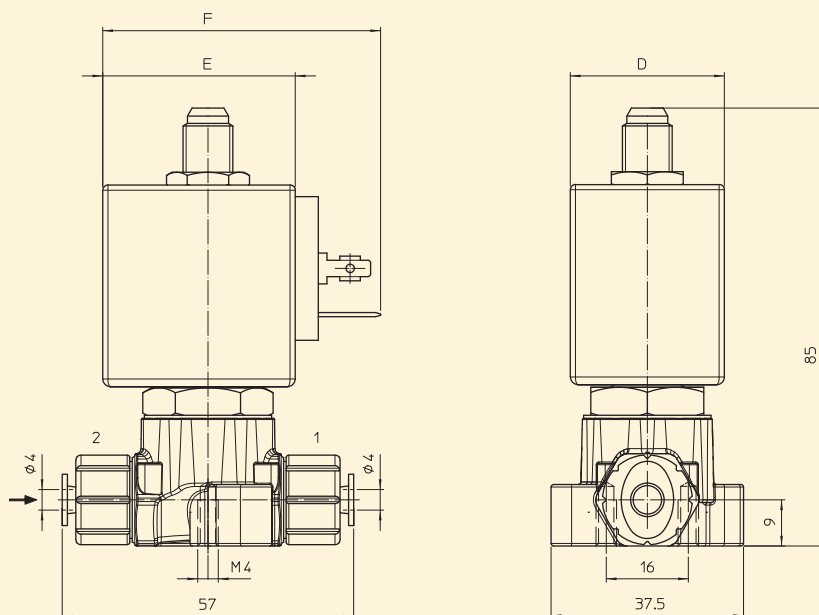
#### FEATURES:

|                              |  |
|------------------------------|--|
| <b>Electrical conformity</b> | IEC 335  |
| <b>Protection degree</b>     | IP 65 EN 60529 (DIN 40050)<br>with coil fitted by connector. |

#### SPARE PARTS:

- Coil:**  
See coils list
- Complete plunger:**  
Code R453269/VX
- Complete armature tube:**  
Code R451830/D
- Gasket O-Ring:**  
Code R990000/VX

#### DIMENSIONS:



| COIL<br>TYPE | POWER ABSORPTION |              |                | DIMENSIONS |         |         |
|--------------|------------------|--------------|----------------|------------|---------|---------|
|              | W<br>=           | Hold<br>VA ~ | Inrush<br>VA ~ | D<br>mm    | E<br>mm | F<br>mm |
| B            | 8                | 14,5         | 25             | 30         | 42      | 54      |



# Solenoid valve 3/2 way N.C. Direct acting - NSF Certified

31AP6A1V15-T0

÷

31AP6A1V30-T0

## PRESENTATION:

Direct acting S.V. for interception of fluids compatible with the construction materials.

Minimum operational pressure is not required.

The materials used and the tests carried out ensure maximum reliability and duration.

USE: Vending

PIPES: Push-in Ø 6

COIL: 8W - Ø 13  
BDA - BSA 155°C (class F)  
BDV 180°C (class H)

**COIL HOUSING AND COIL FORMER MATERIAL ARE  
MADE BY 100% VIRGIN MATERIAL.**

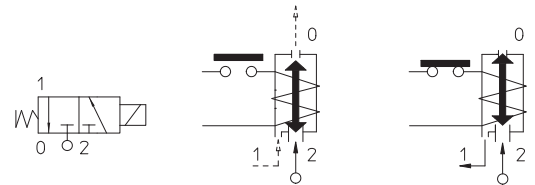
Ambient temperature:

See coils catalogue page for its compatibility.



| Gaskets  | Temperature |         | Medium            |
|--|-------------|---------|-------------------|
| V+E=FKM+EPDM<br>(fluoroelastomer + ethylene-<br>propylene) | - 10°C      | + 140°C | Water, air, steam |

Verify tubes for pressure characteristics and operating temperatures.



Max allowable pressure (PS) 16 bar - According to EN 60730-2-8 - Factor of safety for domestic applications equal to 5 times PS

| Pipe     | Code          | Max viscosity |     | Ø<br>mm | Kv<br>l/mn | Power<br>watt | Pressure   |         |    |
|----------|---------------|---------------|-----|---------|------------|---------------|------------|---------|----|
|          |               | cSt           | °E  |         |            |               | min<br>bar | M.O.P.D |    |
| P.I. Ø 6 | 31AP6A1V15-T0 | 12            | ~ 2 | 1,5*    | 1,1        | 8             | 0          | 15      | 15 |
|          | 31AP6A1V20-T0 | 37            | ~ 5 | 2*      | 1,8        |               |            | 10      | 10 |
|          | 31AP6A1V25-T0 | 53            | ~ 7 | 2,5*    | 2,5        |               |            | 6       | 6  |
|          | 31AP6A1V30-T0 |               |     | 3*      | 3,4        |               |            | 5       | 5  |

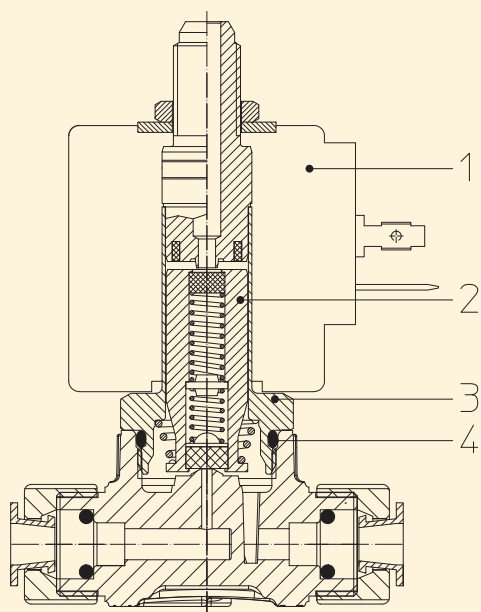
**Max allowable pressure (PS) 25 bar** - Safety factor for industrial application equal to 3 times PS | Please consult our Technical Service.



## Note

\* 3rd way exhaust= Ø 2,5 mm | Coil nut assembly 2 Nm max; armature tube 4 Nm | For tubes: PA and PTFE tolerance max (±0,1) | Available on request the Push-in locking clip, see catalogue page R992404/ | Available with coil Ex nA | The use of rigid sealings (Ruby or PTFE) usually implies a slight leakage, limited within 2scc/min at the pressure of 1 bar | For application with steam or with PS above the 16 bar, please consult our Technical Service| Available on request and with minimum quantities.

The "ODE" reserves the right to carry out technical and aesthetic modifications without prior notice.



#### MATERIALS:

|                                |                                 |
|--------------------------------|---------------------------------|
| <b>Body</b>                    | PPS                             |
| <b>Armature tube</b>           | Stainless steel AISI series 300 |
| <b>Fixed core</b>              | Stainless steel AISI series 400 |
| <b>Plunger</b>                 | Stainless steel AISI series 400 |
| <b>Phase displacement ring</b> | Gold plated copper              |
| <b>Spring</b>                  | Stainless steel AISI series 300 |
| <b>Seal</b>                    | V=FKM                           |
| <b>Orifice</b>                 | PPS                             |
| <b>OR Pipe</b>                 | EPDM                            |

#### On request:

|                             |               |
|-----------------------------|---------------|
| <b>Connector</b>            | Pg 9 or Pg 11 |
| <b>Connector conformity</b> | ISO 4400      |

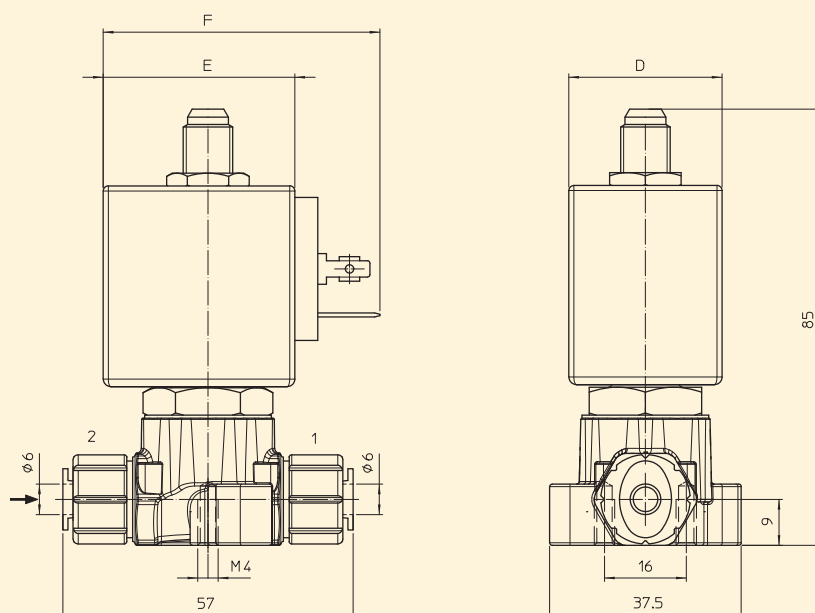
#### FEATURES:

|                              |  |
|------------------------------|--|
| <b>Electrical conformity</b> | IEC 335  |
| <b>Protection degree</b>     | IP 65 EN 60529 (DIN 40050)<br>with coil fitted by connector. |

#### SPARE PARTS:

- Coil:**  
See coils list
- Complete plunger:**  
Code R453269/VX
- Complete armature tube:**  
Code R451830/D
- Gasket O-Ring:**  
Code R990000/VX

#### DIMENSIONS:



| COIL<br>TYPE | POWER ABSORPTION |              |                | DIMENSIONS |         |         |
|--------------|------------------|--------------|----------------|------------|---------|---------|
|              | W<br>=           | Hold<br>VA ~ | Inrush<br>VA ~ | D<br>mm    | E<br>mm | F<br>mm |
| B            | 8                | 14,5         | 25             | 30         | 42      | 54      |



## Solenoid valve 3/2 way N.C. Direct acting - NSF Certified

31AP7A1V15-T0

÷

31AP7A1V30-T0

### PRESENTATION:

Direct acting S.V. for interception of fluids compatible with the construction materials.

Minimum operational pressure is not required.

The materials used and the tests carried out ensure maximum reliability and duration.

USE: Vending

PIPES: Push-in Ø 8

COIL: 8W - Ø 13  
BDA - BSA 155°C (class F)  
BDV 180°C (class H)

**COIL HOUSING AND COIL FORMER MATERIAL ARE  
MADE BY 100% VIRGIN MATERIAL.**

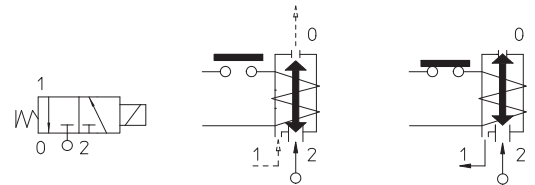
Ambient temperature:

See coils catalogue page for its compatibility.



| Gaskets  | Temperature |         | Medium            |
|--|-------------|---------|-------------------|
| V+E=FKM+EPDM<br>(fluoroelastomer + ethylene-propylene) | - 10°C      | + 140°C | Water, air, steam |

Verify tubes for pressure characteristics and operating temperatures.



Max allowable pressure (PS) 16 bar - According to EN 60730-2-8 - Factor of safety for domestic applications equal to 5 times PS

| Pipe     | Code          | Max viscosity |     | Ø<br>mm | Kv<br>l/mn | Power<br>watt | Pressure   |         |    |
|----------|---------------|---------------|-----|---------|------------|---------------|------------|---------|----|
|          |               | cSt           | °E  |         |            |               | min<br>bar | M.O.P.D |    |
| P.I. Ø 8 | 31AP7A1V15-T0 | 12            | ~ 2 | 1,5*    | 1,1        | 8             | 0          | 15      | 15 |
|          | 31AP7A1V20-T0 | 37            | ~ 5 | 2*      | 1,8        |               |            | 10      | 10 |
|          | 31AP7A1V25-T0 | 53            | ~ 7 | 2,5*    | 2,5        |               |            | 6       | 6  |
|          | 31AP7A1V30-T0 |               |     | 3*      | 3,4        |               |            | 5       | 5  |

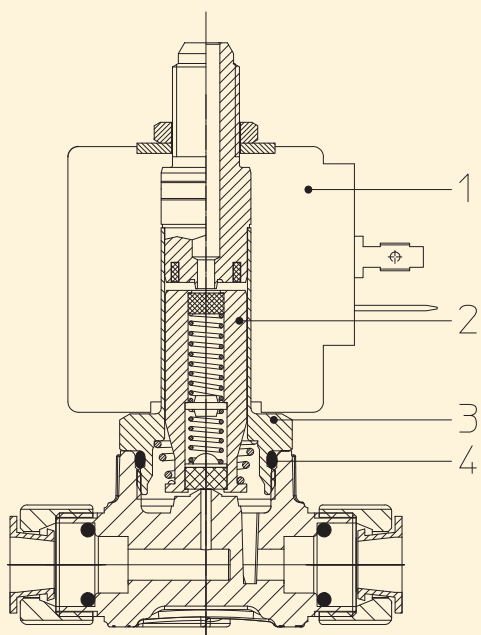
**Max allowable pressure (PS) 25 bar** - Safety factor for industrial application equal to 3 times PS | Please consult our Technical Service.



### Note

\* 3rd way exhaust= Ø 2,5 mm | Coil nut assembly 2 Nm max; armature tube 4 Nm | For tubes: PA and PTFE tolerance max (±0,1) | Available on request the Push-in locking clip, see catalogue page R992404/ | Available with coil Ex nA | The use of rigid sealings (Ruby or PTFE) usually implies a slight leakage, limited within 2scc/min at the pressure of 1 bar | For application with steam or with PS above the 16 bar, please consult our Technical Service| Available on request and with minimum quantities.

The "ODE" reserves the right to carry out technical and aesthetic modifications without prior notice.



#### MATERIALS:

|                                |                                 |
|--------------------------------|---------------------------------|
| <b>Body</b>                    | PPS                             |
| <b>Armature tube</b>           | Stainless steel AISI series 300 |
| <b>Fixed core</b>              | Stainless steel AISI series 400 |
| <b>Plunger</b>                 | Stainless steel AISI series 400 |
| <b>Phase displacement ring</b> | Gold plated copper              |
| <b>Spring</b>                  | Stainless steel AISI series 300 |
| <b>Seal</b>                    | V=FKM                           |
| <b>Orifice</b>                 | PPS                             |
| <b>OR Pipe</b>                 | EPDM                            |

#### On request:

|                             |               |
|-----------------------------|---------------|
| <b>Connector</b>            | Pg 9 or Pg 11 |
| <b>Connector conformity</b> | ISO 4400      |

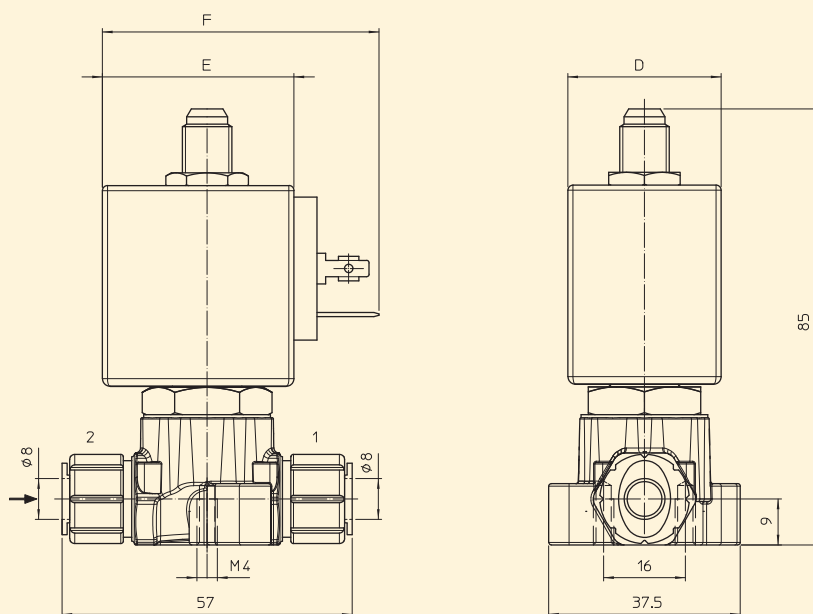
#### FEATURES:

|                              |  |
|------------------------------|--|
| <b>Electrical conformity</b> | IEC 335  |
| <b>Protection degree</b>     | IP 65 EN 60529 (DIN 40050)<br>with coil fitted by connector. |

#### SPARE PARTS:

- Coil:**  
See coils list
- Complete plunger:**  
Code R453269/VX
- Complete armature tube:**  
Code R451830/D
- Gasket O-Ring:**  
Code R990000/VX

#### DIMENSIONS:



| COIL TYPE | POWER ABSORPTION |              |                | DIMENSIONS |         |         |
|-----------|------------------|--------------|----------------|------------|---------|---------|
|           | W<br>=           | Hold<br>VA ~ | Inrush<br>VA ~ | D<br>mm    | E<br>mm | F<br>mm |
| B         | 8                | 14,5         | 25             | 30         | 42      | 54      |